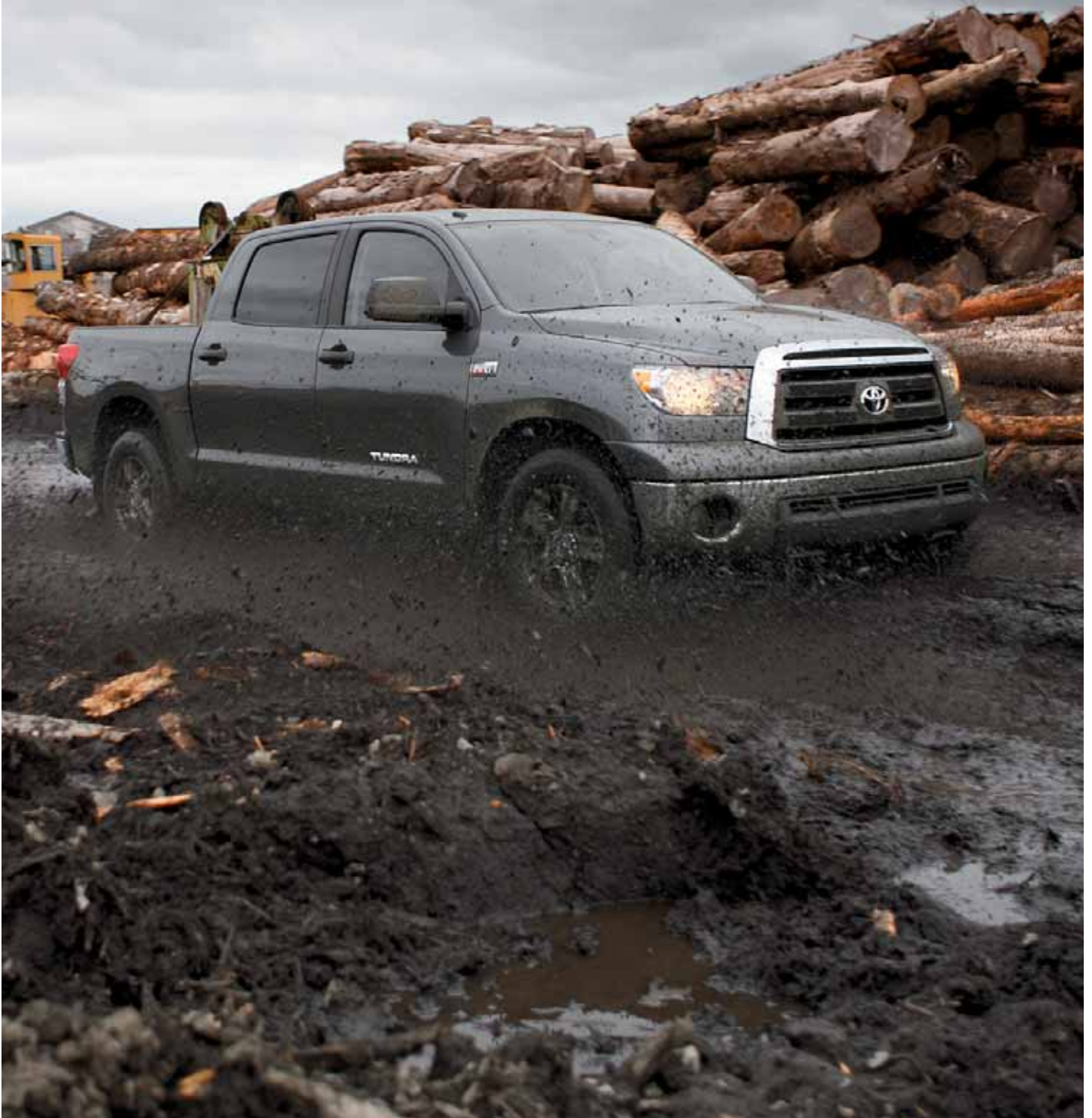




TUNDRA

2011



THE “MOST DEPENDABLE LARGE PICKUP” —FIVE YEARS IN A ROW.¹

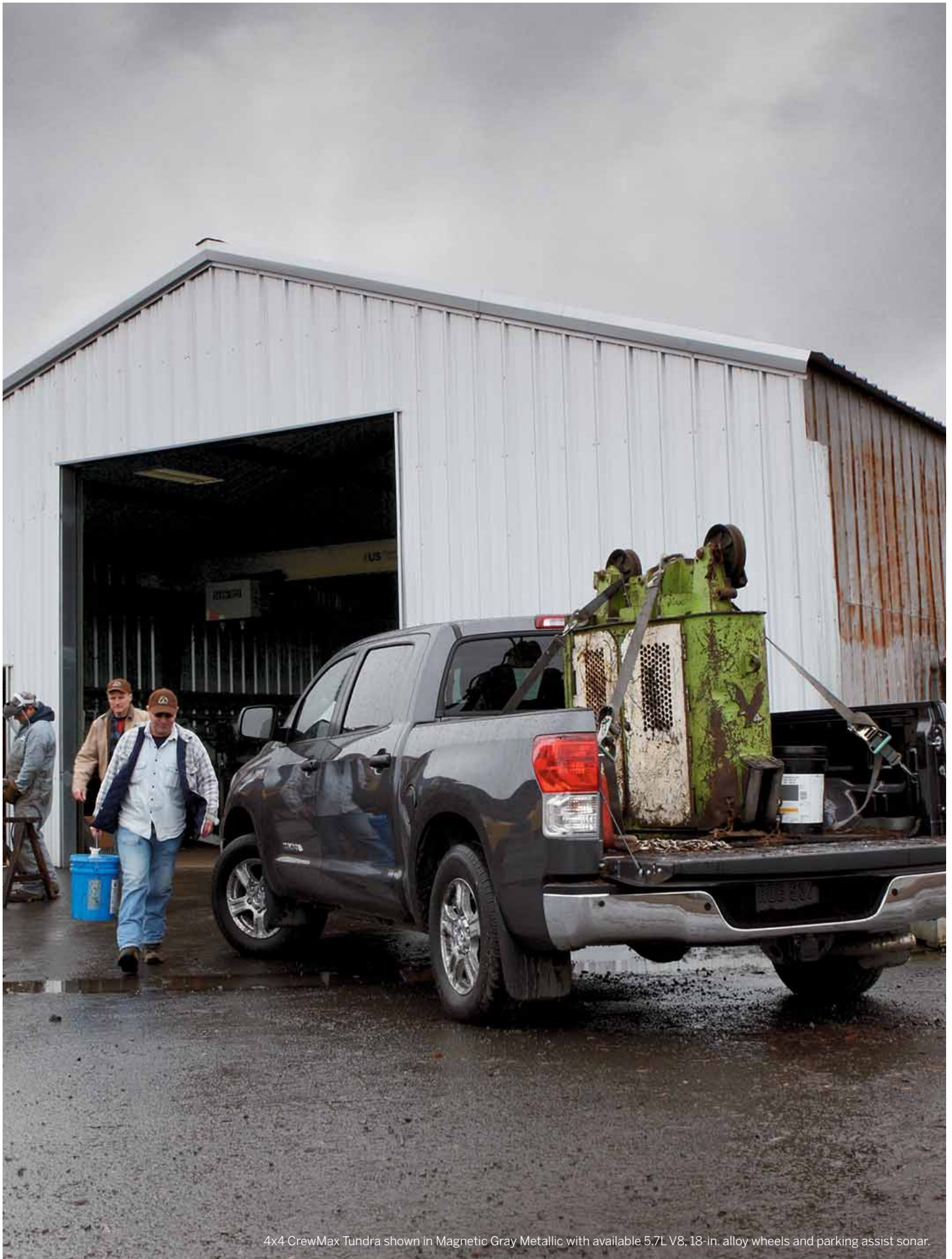
Every year, J.D. Power and Associates¹ conducts a proprietary Vehicle Dependability Study that asks owners of three-year-old full-size pickups about the problems they've experienced in the past 12 months. And for the fifth year in a row, the truck receiving the lowest number of reported problems is Toyota Tundra.

That kind of built-to-last strength, toughness and reliability has always been at the core of Toyota truck engineering. So when there's work to be done, Tundra owners know they can load it up, hitch it on and get moving. Tundra's available 5.7L V8 puts out 381 hp and 401 lb.-ft. of torque, enough brute force for a towing capacity of up to 10,400 lb.^{2,3} The available 4.6L V8 packs 310 hp and 327 lb.-ft. of torque, yet has an EPA-estimated rating of 20 mpg highway.⁴ And our new 4.0L V6 engine gives you hardworking power plus remarkable mpg.

But what makes the full-size Tundra truly remarkable is this: With its proven capabilities, it's earned a place in the conversation about how to build a stronger, tougher, smarter pickup. And along the way, it's changed the status quo among 1/2-ton pickups. Now, that's pretty powerful.

The 2011 Tundra. The truck that's changing it all.

¹The Toyota Tundra received the lowest number of problems per 100 vehicles among large pickups in the proprietary J.D. Power and Associates 2006–2010 Vehicle Dependability StudiesSM. 2010 study based on 52,422 consumer responses measuring problems consumers experienced in the past 12 months with three-year-old vehicles (2007 model year cars and trucks). Proprietary study results are based on experiences and perceptions of consumers surveyed October–December 2009. Your experiences may vary. Visit jdpower.com. ²4x2 Regular Cab Long Bed equipped with 5.7L V8. ³See footnote 24 in Disclaimers section. ⁴See footnote 22 in Disclaimers section.



4x4 CrewMax Tundra shown in Magnetic Gray Metallic with available 5.7L V8, 18-in. alloy wheels and parking assist sonar.



A WORKHORSE OF A WORK TRUCK.

REGULAR CAB

Available in Standard Bed (6.5 ft.)¹ or Long Bed (8.1 ft.)² configurations.

Available in three engine sizes: 4.0L V6, 4.6L V8 and 5.7L V8.

4x2 5.7L V8 Long Bed features maximum payload capacity up to 2090 lb³ when properly equipped.

4x2 4.6L V8 Standard Bed rated for 1870-lb. maximum payload³.

4x2 5.7L V8 Long Bed features standard towing capacity of 10,400 lb⁴.

V6 Standard Bed offers maximum towing capacity of 4900 lb⁴.

ROOM FOR SIX AND A LOT MORE.

DOUBLE CAB

Available in Standard Bed (6.5 ft.) or Long Bed (8.1 ft.) configurations^{2,5}.

Available in three engine sizes: 4.0L V6, 4.6L V8 and 5.7L V8.

4x2 5.7L V8 Standard Bed features maximum payload capacity up to 1745 lb³.

4x2 4.6L V8 Standard Bed rated for 1615-lb. maximum payload³.

4x2 5.7L V8 Standard Bed features towing capacity of 10,100 lb. when properly equipped⁴.

V6 Standard Bed offers maximum towing capacity of 4500 lb⁴.

THE ULTIMATE CREW TRUCK.

CREWMAX

Short Bed (5.5 ft.) configuration.

Available in two engine sizes: 4.6L V8 and 5.7L V8.

4x2 5.7L V8 features maximum payload capacity up to 1665 lb³.

4x2 4.6L V8 rated for 1550-lb. maximum payload³.

4x2 5.7L V8 features towing capacity of 9900 lb. when properly equipped⁴.

¹Not available with 5.7L V8. ²Not available with 4.6L V8. ³See footnote 23 in Disclaimers section.
⁴See footnote 24 in Disclaimers section. ⁵Not available with 4.0L V6.



POWER

DOING THE JOB RIGHT REQUIRES THE RIGHT TOOL FOR THE JOB.

Pickup owners don't all demand the same thing from their trucks. Which is why Tundra offers a choice of engines, including a 5.7L V8. With an output of 381 hp and 401 lb.-ft. of torque, our V8 brings some serious muscle to the task – whether that means hauling, towing or simply heading home. And with CrewMax, you get Tundra's towing¹ and payload² capabilities with space enough for a crew of six.

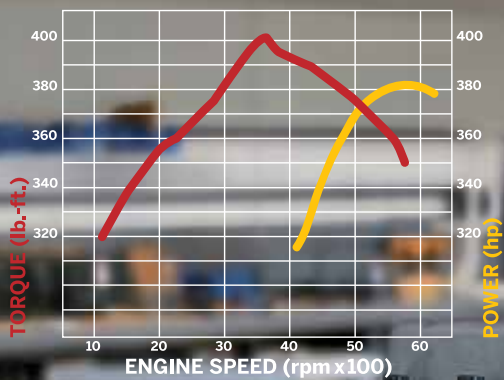


4x4 CrewMax shown in Silver Sky Metallic with available 5.7L V8 and 18-in. alloy wheels.

¹See footnote 24 in Disclaimers section. ²See footnote 23 in Disclaimers section.

THREE ENGINES. ONE DEFINING FEATURE: TORQUE.

Along with our 5.7L i-FORCE V8 and 4.6L engines, our new 4.0L V6 knows what you want from a truck motor: torque. Check out the charts for each of the three Tundra engines and you'll see the torque response is on tap across a wide range of rpm. One reason? An Acoustic Control Induction System (ACIS) that optimizes the engine's response whether you're accelerating from a stoplight with a trailer in tow or just in need of some extra punch at higher rpm.

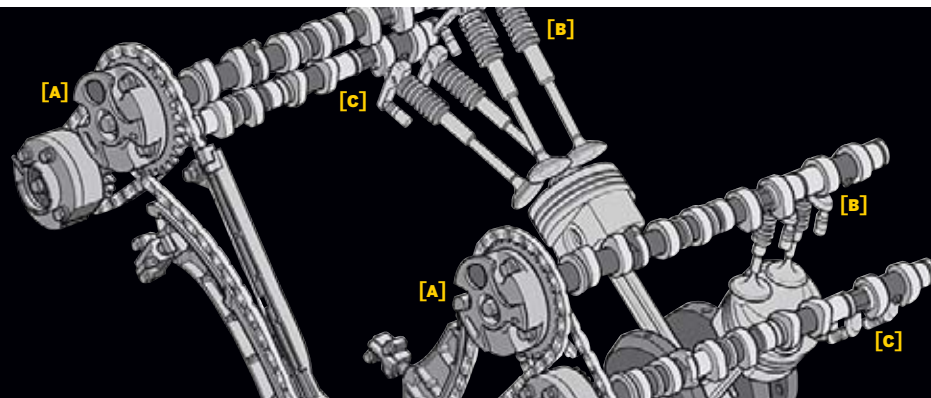


5.7-LITER¹

DOHC 32V i-FORCE V8 with Dual Independent Variable Valve Timing with intelligence (VVT-i).



An available 5.7L V8 E85 Flex Fuel² engine makes Tundra an alternative-fuel vehicle.



DUAL INDEPENDENT VVT-i

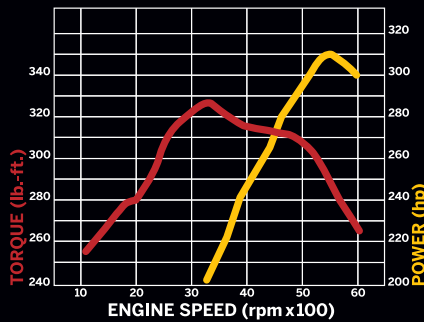
On the available 5.7L i-FORCE V8, Dual Independent VVT-i [A] can even adjust timing for the intake [B] and the exhaust valves [C] independently, with remarkable results: More than 90% of the 5.7L V8's peak torque of 401 lb.-ft. is on tap from just 2400 rpm all the way to 5500 rpm.

¹Chart shown for Double Cab Long Bed.
²See footnote 21 in Disclaimers section.



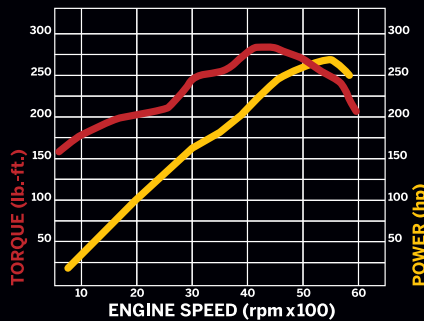
4 INTO 2 INTO 1 TUBULAR EXHAUST MANIFOLD

The available 5.7L i-FORCE V8 features an exhaust system with a pair of 4 into 2 into 1 tubular headers. This design helps the exhaust flow more freely, reducing back pressure and enhancing mid-range torque. Made from stainless steel, the design is also lighter and more corrosion-resistant than cast-iron manifolds.



4.6L V8

With 310 hp and 327 lb.-ft. of torque, our compact 4.6L V8 gives you some serious power per liter. After all, it pays to be as efficient as possible.



4.0L V6

Tundra's new, all-aluminum 4.0L V6 engine is a modern powerplant. Its 24 valves are actuated by Double Overhead Cams (DOHC) and controlled by Dual Independent Variable Valve Timing with intelligence (VVT-i). The result is a technologically advanced engine with an old-fashioned work ethic: Its peak power output is 270 hp at 5600 rpm and 278 lb.-ft. of torque at just 4400 rpm.

THE EFFICIENCY OF DUAL INDEPENDENT VVT-i

To optimize the engine's volumetric efficiency, VVT-i knows precisely how long to leave the valves open so that the engine pumps as much air as possible. It's one reason the power band is so wide.



TOWING

CAPABLE OF TOWING 10,000 LB.¹ YEAH, AS IN FIVE TONS.

Tundra offers select models capable of towing at least five tons, including the 4x2 Regular Cab Long Bed with an available 5.7L V8 that has a standard towing capacity of 10,400 lb.¹ Examine it closely and you'll see Tundra's towing capacity is not just a paper promise. It's yours to use — confidently, easily and over the long haul.



4x2 Double Cab Tundra Standard Bed shown in Spruce Mica with available 5.7L V8, Tow Package, mudguards, fog lamps and styled steel wheels.



TOW/HAUL MODE

Included with the available Tow Package, TOW/HAUL mode on either Tundra 6-speed automatic transmission lets the driver choose a different shift logic to help improve towing performance. When engaged, TOW/HAUL shifts the transmission into lower gears and holds the gear during acceleration and deceleration so the transmission doesn't "hunt" or awkwardly shift between gears, especially on mountain roads while towing or hauling a heavy load. Acceleration, downhill engine braking, pulling power and cruising comfort are also enhanced.

¹See footnote 24 in Disclaimers section.



TECHNICALLY, IT'S A 1/2-TON. BUT THERE'S MORE TO IT THAN THAT.

Tundra's available 10,400-lb. towing capability¹ is impressive for a 1/2-ton pickup. And it's strength backed by a frame design we call TripleTech.[™] Where others might use a single type of material for their frame, Tundra uses a specific structure for each of the three frame sections. TripleTech[™] is one reason Tundra is the ideal tow vehicle, with strength and durability built in.



¹See footnote 24 in Disclaimers section. ²4.100 rear end on 4.6L V8 models.

6-SPEED AUTOMATICS

Tundra's available 6-speed automatics give it a wide overall gear range. That translates into a brisk acceleration at low- and mid-range rpm. And first gear's ratio is extremely low — ideal for serious towing. There's also no need to choose from a variety of rear axles: Tundra's available 4.300 rear end² works seamlessly with the wide transmission gear range to optimize performance.

TRANSMISSION COOLING SYSTEM

Our available 5.7L V8/6-speed automatic transmission powertrain comes with an Automatic Transmission Fluid (ATF) Warmer, improving performance on cold start-ups. An available Tow Package also comes with supplemental coolers for the ATF, the engine oil and the power steering fluid. It's all in an effort to cut heat buildup caused by added demands of towing.

DRIVE SHAFT

Regular Cab Long Bed, Double Cab and CrewMax models use a 2-piece drive shaft: The front section is steel, the rear section aluminum. Using aluminum cuts Tundra's unsprung weight and reduces rotational mass for enhanced acceleration. It also cuts down on noise, vibration and harshness.

TRAPEZOIDAL FRAME SECTION

When you think of suspension, you probably think about up-and-down movement. But our engineers also thought about lateral stability. The trapezoidal rear section of Tundra's TripleTech[™] frame allows the rear leaf springs to be positioned toe-out, where the front is mounted farther out than the rear. The result: The trapezoidal rear frame section and the toe-out rear leaf springs help deliver superior lateral control when cornering and especially while towing heavy loads.



INTEGRATED HITCH RECEIVER

V8 Tundra models with the available Tow Package come with the hitch receiver integrated into the frame. Attached far down the frame rails using a dozen high-strength bolts, the receiver features a cross member for increased towing strength.



MASSIVE RING GEAR

If there's a weak link on most pickup trucks, chances are it's the ring gear in the rear differential. It's where push comes to shove, especially under the stress of repeated heavy payloads and towing. To handle the massive torque loads of Tundra's available 5.7L V8, our engineers matched it to a massive ring gear: 10.5 inches.

The Tundra differentials benefit from "face hob" gear-cutting of the ring and pinion gears. Result? A stronger tooth form that's able to handle the increased torque capacity.



[A]

[B]

[C]

TRIPLETECH™ FRAME

Why do we call it TripleTech™? Because design, materials and construction are combined in a frame that is fully boxed [A] up front and has a reinforced C [B] under the cab. Under the bed, an open C [C] helps deal with a fully loaded suspension, maximizing payload without sacrificing durability.



PAYLOAD

TRUCKONOMICS 101: BIGGER PAYLOAD, BIGGER PAYDAY.

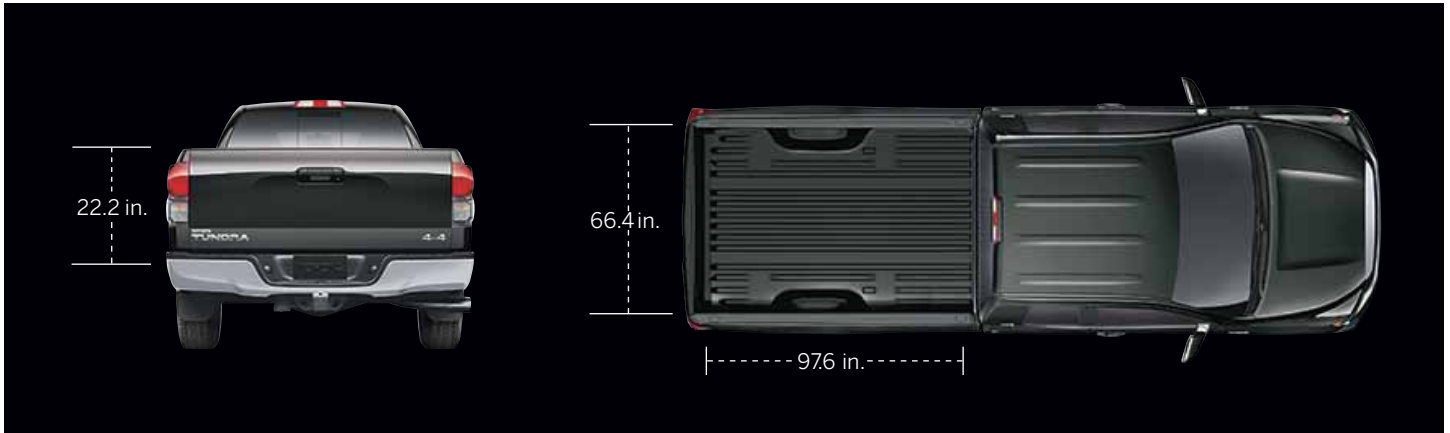
Sometimes, getting down to business means getting back to basics. And with Tundra's Work Truck Package, you get the essentials of a workhorse, a truck that puts its priorities right in line with your bottom line. It starts with a regular full-size cab fitted with heavy-duty vinyl seats and durable rubber-type floor covering. It's roomy enough for full-size workers. That leaves plenty of room for payload. And at the end of the day, isn't that what matters most?



4x2 Regular Cab Standard Bed shown in Super White with available 4.6L V8, Work Truck Package, WEATHER GUARD® lumber rack and toolbox.



PAYLOAD



LONG, WIDE AND DEEP

When you put the length, width and depth together, Tundra gives you big box capacity. Tundra's cargo bed is 22.2 inches deep — deep enough for 5-gallon paint containers to fit under the rails, even with a tonneau cover.

DECK RAIL SYSTEM¹

Load up the Tundra's deep cargo bed and let the available Deck Rail System help secure the load. The system is flexible enough to secure various types of loads.

CLEATS AND TIE-DOWNS

Connected to the upper rail of the bed, the system uses four cleats rated at 220 lb. per attachment to help ensure that what's in the bed stays in the bed.

2X6 SLOTS

It's easy to partition the Tundra's cargo bed: Take some 2x6 lumber, cut it to fit and slide the pieces into the slots stamped into the sidewalls. You've got a cargo bed organized into three separate sections.

2X4 SLOTS

Creating a 2-tier bed is easy too, thanks to sidewall notches for 2x4 supports.

PROTECTION

To help protect the durable finish of the cargo box, Tundra uses a galvanized zinc undercoating to help guard against scratches, dings and dents which may eventually result in corrosion.

EASY LOWER AND LIFT TAILGATE

Tundra's tailgate opens easily, and closes easily. Two fingers will do the job, thanks to a gas-charged damping strut that helps make sure the tailgate won't slam if you drop it.

REMOVABLE AND LOCKABLE GATE

Tundra's tailgate is easy to remove, so it's easy to use ramps for loading heavy cargo. And the gate is lockable to help secure cargo concealed under a shell.

¹Standard on Limited, available on all other models.



Double Cab Long Bed Shown here and on previous page.



CONTROL

TOW LIKE YOU HAVE 18 WHEELS.

Tundra's not an 18-wheeler, obviously. But it's learned a thing or two from the big rigs about towing with confidence. Standard for 2011, Tundra's all-new Trailer-Sway Control (TSC)¹ helps maintain truck stability when towing. Tundra also comes standard with Automatic Limited-Slip Differential (Auto LSD). If one of Tundra's drive wheels starts to slip, Auto LSD will automatically brake the spinning wheel, sending all available power to the wheel with traction. And no other truck in its class has larger front brake rotors than Tundra. Press the brake pedal and you put powerful 4-piston calipers to work stopping the massive front rotors. The combination of these three features helps Tundra drivers enjoy a new level of security and confidence when towing.



INTRODUCING TRAILER-SWAY CONTROL.¹ NOW STANDARD ON ALL MODELS.

TRAILER-SWAY CONTROL (TSC)¹

When a vehicle is towing a trailer, conditions such as side winds, load undulation or the driver's steering input can result in trailer sway. When Tundra's Trailer-Sway Control (TSC)¹ detects trailer sway, the system applies brake pressure at Tundra's individual wheels and controls the engine torque to help reduce trailer sway. The system illuminates the stop lamps so that vehicles behind are alerted to the fact that your Tundra is decelerating.

AUTOMATIC LIMITED-SLIP DIFFERENTIAL (Auto LSD)

Auto LSD uses the brakes to simulate the action of a mechanical limited-slip differential. By applying brakes individually to wheels spinning with no traction, torque is sent to the wheels with grip. Even a 4x2 Tundra can dig itself out of many difficult low-traction situations.

Typically, engine torque is distributed to the rear wheels through an open differential. An open differential sends power down the path of least resistance. Great for turns, when the outside wheel has to spin faster than the inside wheel. But not so great if a wheel loses traction, because the differential will send all of its torque to the spinning wheel. With Auto LSD, Tundra will apply brakes to the slipping wheel. This increases resistance at the wheel with slip, feeding power to the wheel with grip.

¹See footnote 19 in Disclaimers section.



4x2 Double Cab Tundra Standard Bed shown in Barcelona Red Metallic with available 5.7L V8, TRD Off-Road Package and XM® Radio¹
See footnote 24 in Disclaimers section for more information on towing. ¹See footnote 4 in Disclaimers section.



SAFETY

CHANGING THE SAFETY TECHNOLOGY EXPECTED FROM A TRUCK.

In three crash tests conducted by the Insurance Institute for Highway Safety (IIHS) — front, side and rear — Tundra emerged with the top rating:¹ Tundra was the first full-size pickup truck ever judged a Top Safety Pick by the IIHS.¹ No wonder: Tundra comes standard with side curtain and front seat-mounted side airbags² and driver and front outboard passenger knee airbags.² And as part of Toyota's Star Safety System,TM standard on every 2011 Toyota, Tundra comes equipped with Vehicle Stability Control (VSC).³



Photo not intended to replicate actual inflated airbags.

¹Based on IIHS. Ratings only meaningful when comparing vehicles in the same weight class. www.iihs.org ²See footnote 16 in Disclaimers section. ³See footnote 14 in Disclaimers section.

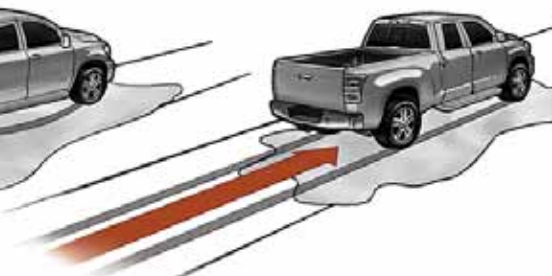


SAFETY

WITHOUT TRAC



WITH TRAC



Possible Scenario



STAR™ SAFETY SYSTEM

Toyota's Star Safety System™ is a combination of five safety features that come standard with every Tundra: Vehicle Stability Control (VSC); Traction Control (TRAC), Anti-lock Brake System (ABS) with Electronic Brake-force Distribution (EBD) and Brake Assist (BA).² These features are designed for one purpose: to help keep the driver in control of the vehicle at all times. Because when it comes to the well-being of you and your passengers, Toyota has raised the standard.

VEHICLE STABILITY CONTROL (VSC)¹

VSC helps prevent two factors that frequently cause drivers to lose traction during cornering: front wheelslip and rear wheelslip. VSC monitors your steering angle and compares it to the direction in which your vehicle is actually traveling. If VSC detects a loss of traction, two things happen to help correct the problem: First, engine output is reduced; then, brake force is applied to individual wheels as needed.

TRACTION CONTROL (TRAC)

TRAC helps maintain traction on wet, icy, loose or uneven surfaces. Like VSC, TRAC applies braking individually and reduces engine output to help assist the driver with control of the vehicle.

4-WHEEL ANTI-LOCK BRAKE SYSTEM (ABS)

ABS technology helps ensure that you're able to continue steering during emergency braking. An ABS-equipped vehicle helps keep the brakes from locking up by "pulsing" the brake of each wheel independently, more rapidly than would be humanly possible. Since the system repeatedly releases the brake pressure for fractions of a second, the wheels never stop rotating, which helps the vehicle avoid going into a skid and helps the driver retain steering control.

ELECTRONIC BRAKE-FORCE DISTRIBUTION (EBD)

Electronic Brake-force Distribution (EBD) helps keep the vehicle balanced when braking. If you have to stop abruptly, momentum causes the vehicle to tilt forward and reduces the brake force of the rear tires. EBD responds to sudden stops by redistributing brake force. Wheels with more braking effectiveness receive more brake force; wheels with less effectiveness receive less brake force. This helps prevent brake lockup. EBD is especially helpful when carrying cargo. Sensors recognize the extra load the cargo puts on the rear axle, so brake pressure on the rear wheels is increased because the extra weight improves braking effectiveness.

BRAKE ASSIST (BA)²

In emergency braking situations, Brake Assist (BA) applies additional brake pressure so you can take full advantage of ABS. A driver in a panic situation could fail to apply enough pressure to the brake pedal. Fortunately, Brake Assist (BA) can detect sudden or "panic" braking, so the system applies additional pressure to help prevent a collision.

¹See footnote 14 in Disclaimers section. ²See footnote 15 in Disclaimers section.



4x2 CrewMax shown in Pyrite Mica with available SR5 Package.



IF ONLY EVERYTHING IN LIFE WAS THIS ACCOMMODATING.

Imagine what your day would be like if everything was as flexible and accommodating as the Tundra's interior. Tundra CrewMax gives you the room to roll with a six-man work detail and still have plenty of flexible space left over for stowing gear. Tundra gives you plenty of ways to keep everything organized, from your file folders to your work gloves to your laptop to your favorite coffee mug. Take a look inside Tundra and you'll find we've figured out how to stay true to the old adage: a place for everything and everything in its place.



Double Cab interior shown in Graphite.



INTERIOR



CrewMax Limited interior shown in Graphite with available DVD navigation system¹

OFFICE ON WHEELS

Tundra is filled with innovative storage solutions that make working on the go easier. The available center-console storage area is designed to hold hanging file folders or to accommodate a laptop.

NAVIGATION¹

Your truck goes where the work is, and that can change week to week, day to day, even hour to hour. Tundra's available navigation system helps you find where you're going, serving up large, legible maps on a 7-inch screen located in the center of the dash.

BLUETOOTH® MUSIC STREAMING²

Tundra integrates an advanced version of available Bluetooth® wireless technology. So you can play songs on Tundra's audio system streamed from compatible devices enabled with music streaming.

[1] REAR-SEAT DVD ENTERTAINMENT SYSTEM

With an available DVD system that lets rear-seat passengers enjoy movies, music, DVDs and digital games, Tundra CrewMax enhances onboard entertainment.

[2] BACKUP CAMERA³

Tundra's available backup camera augments large sideview mirrors by displaying what it sees behind you on the available integrated rearview mirror display screen. It's especially helpful when hitching up to a trailer.

[3] POWER THIGH SUPPORT

Tundra Limited's and Platinum's driver's seat is fitted with a seat cushion extension that provides added inches of support.

¹See footnote 10 in Disclaimers section. ²See footnote 3 in Disclaimers section. ³See footnote 11 in Disclaimers section.





INTERIOR

CREWMAX INTERIOR

Big in all the right places, CrewMax maximizes the space for your crew and all their gear. Check out the class-leading rear leg room — 44.5 inches, or nearly 4 feet. And CrewMax has the only slide-and-recline rear seat in its class. The 60/40 split rear seat slides, reclines and folds flat to form a hard work surface.





INTERIOR



Regular Cab interior shown in Graphite with available 6-disc in-dash CD changer, front bucket seats and SR5 Package.

REGULAR CAB

Everywhere you look, Tundra Regular Cab accommodates your need for size, space and storage. The lower glove box is big enough to hold a standard-size steel drink bottle.

And there's plenty more storage space behind the front seat — enough to stow a 5-gallon paint bucket with the seat all the way back.



WORK TRUCK PACKAGE

Get back to basics with the Tundra Regular Cab or Double Cab with the Work Truck Package. From its durable rubber-type floor covering to its heavy-duty vinyl seats, it's a straightforward work truck.





DOUBLE CAB

The Tundra Double Cab interior is big where it counts, especially in the rear seat. The key number here is the seatback angle. At a generous 22 degrees, it lets your crew sit down, stretch out and enjoy the rear seat in true comfort. And like every Tundra, the Double Cab features 3-point seatbelts and adjustable headrests at every seating position.

REAR UNDER-SEAT STORAGE BOX¹

You can never have enough storage space, right? And that's especially true of a truck's interior. Which is why Tundra Double Cab has an available rear under-seat storage box. You can keep valuable possessions like your favorite fishing rod or tools like your can't-live-without-it crowbar concealed from prying eyes.

¹Not available with JBL® audio.



PACKAGES¹

REGULAR		DOUBLE		CREWMAX	
TUNDRA		TUNDRA	LIMITED	TUNDRA	LIMITED

SR5 PACKAGE — Regular Cab includes chrome bumpers and grille surround, power windows/door locks/outside mirrors, cruise control, remote keyless entry system, variable intermittent windshield wipers, carpet flooring, SR5 fabric, passenger-side fold-flat seat and SR5 badge. (Double Cab and CrewMax include Tow Package and require Cold Weather Package only.)

COLOR-KEYED BUMPER PACKAGE — Includes color-keyed front and rear bumpers and grille surround, fog lamps and sliding rear window with privacy glass. (Deletes standard tow equipment.)

COLD WEATHER PACKAGE — Includes heavy-duty battery (not available on V6 models) and starter, windshield wiper de-icer grid with timer, and front and rear mudguards.

MEMORY PACKAGE — Includes power-adjustable driver's seat, power outside mirrors and tilt/telescopic steering wheel, all with memory function. (Not available with tow mirrors.)

TOW PACKAGE — Includes tow hitch receiver, trailer brake controller prewire, 4.300 rear axle ratio (4.100 on 4.6L V8), TOW/HAUL mode switch, transmission fluid temperature gauge, supplemental transmission cooler, engine oil cooler, 7-pin connector and heavy-duty alternator and battery.

V6	V8	V6	V8	V6	V6	V8
O	O	O	O	-	O	-
-	O	-	O	-	-	-
O	O	O	O	S	O	S
-	-	-	-	O	-	O
-	S	-	O	S	O	S

WORK TRUCK PACKAGE 4x2 AND 4x4

REGULAR | TUNDRA GRADE WITH V6 OR V8 ENGINES²

DOUBLE | TUNDRA GRADE WITH V6 OR V8 ENGINES

Includes matte black upper and lower front bumper with matte black grille surround, heavy-duty vinyl bench seat, rubber-type flooring, black instrument panel, manual door locks and windows, 2-speed windshield wipers and optional cruise control. Deletes remote keyless entry and courtesy lamps.



TUNDRA GRADE 4x2 AND 4x4

REGULAR | V6 OR V8 ENGINES²

DOUBLE | V6 OR V8 ENGINES

CREWMAX | V8 ENGINES

Includes color-keyed upper and chrome lower front bumper with chrome grille surround and rear bumper, engine skid plate, dual zone climate control with sync mode, power windows and door locks, variable intermittent windshield wipers, cloth interior and carpet flooring. Double Cab and CrewMax include the above plus SR5 cloth interior, and remote keyless entry system.

Vehicle shown with available 18" styled steel wheels.



TRD SPORT PACKAGE 4x2 ONLY

DOUBLE | TUNDRA GRADE WITH 5.7L V8

Includes 20" carved alloy wheels with P275/55R20 tires, color-keyed front and rear bumpers and grille surround, color-keyed heated outside mirrors, color-keyed door handles, fog lamps, black cloth interior with bucket seats and TRD Sport graphics. (Available in the following exterior colors: Black or Radiant Red only.)

Vehicle shown with additional TRD accessories.



See numbered footnotes in Disclaimers section.

TRD OFF-ROAD PACKAGE 4x2 AND 4x4

REGULAR | TUNDRA GRADE WITH V8

DOUBLE | TUNDRA AND LIMITED GRADE WITH V8

CREWMAX | TUNDRA AND LIMITED GRADE WITH V8

Includes off-road-tuned suspension, Bilstein® shocks, unique 18" alloy wheels with P275/65R18 BFGoodrich® tires, fog lamps (standard on Limited models), manual sliding rear window with privacy glass (Regular Cab models only), engine (4x2 models only) and fuel tank skid plates, front tow hooks (4x2 models only), TRD Off-Road Package graphics and Tow Package. (Excluding Limited and Regular Cab models.)



TRD ROCK WARRIOR PACKAGE 4x4 ONLY

DOUBLE | TUNDRA GRADE WITH 5.7L V8

CREWMAX | TUNDRA GRADE WITH 5.7L V8

Includes 17" TRD forged alloy wheels with LT285/70R17 BFGoodrich® All-Terrain T/A tires, Bilstein® shocks, color-keyed front bumper and grille surround, matte black rear bumper, fog lamps, manual sliding rear window with privacy glass (Double Cab), black cloth interior with manual bucket seats and TRD Rock Warrior graphics. (Available in the following exterior colors: Black, Radiant Red, Magnetic Gray Metallic or Super White only.)



LIMITED GRADE 4x2 AND 4x4

DOUBLE | V8 ENGINES

CREWMAX | V8 ENGINES

Includes color-keyed upper and lower front bumper, chrome rear bumper and chrome grille surround with matte silver billet-style inner grille, fog lamps, chrome outside mirrors and door handles, Deck Rail System, 18" alloy wheels, leather-trimmed interior with heated power front bucket seats, center console, JBL® AM/FM/MP3 CD player with Bluetooth®³ and XM® Radio⁴ with 90-day free trial, Optitron gauges and dual zone automatic climate control, Tow Package and Cold Weather Package.

Vehicle shown with available 20" Limited alloy wheels.



PLATINUM PACKAGE 4x2 AND 4x4

CREWMAX | LIMITED GRADE WITH 5.7L V8

Includes chrome lower front bumper, Memory Package, unique 20" alloy wheels with P275/55R20 tires, Daytime Running Lights (DRL), JBL® voice-activated touch-screen DVD navigation system⁵, power tilt/slide moonroof with sliding sunshade, perforated leather-trimmed seats, heated and ventilated power front bucket seats with embroidered headrests, wood-grain-style trim, auto up/down driver's and front passenger power windows, Glass Breakage Sensor (GBS)⁶ and Platinum badges. (Available in the following exterior colors: Black, Barcelona Red Metallic, Magnetic Gray Metallic and Silver Sky Metallic only.)



See numbered footnotes in Disclaimers section.

FEATURES¹

EXTERIOR

	REGULAR	DOUBLE		CREWMAX	
	TUNDRA	TUNDRA	LIMITED	TUNDRA	LIMITED
Manual headlamp level control	S	S	S	S	S
Daytime Running Lights (DRL)	O	O	O	O	O
Fog lamps	O	O	S	O	S
Matte black upper and lower front bumper with matte black grille surround	P	P	—	—	—
Color-keyed upper and chrome lower front bumper with chrome grille surround	S	S	—	S	P
Color-keyed front bumper with chrome grille surround and matte silver billet-style inner grille	—	—	S	—	S
Chrome rear bumper	S	S	S	S	S
Manual outside mirrors	S	P	—	—	—
Power outside mirrors	P	S	—	S	—
Heated power outside mirrors	O	O	—	O	—
Power-adjustable, heated outside tow mirrors with manual-extend, power-folding (Limited models only) and turn signal indicators	O	O	O	O	O
Chrome auto-dimming heated outside power mirrors with power-folding, puddle lamps (CrewMax Limited only) and turn signal indicators	—	—	S	—	S
Power tilt/slide moonroof with sliding sunshade	—	—	—	O	O
2-speed windshield wipers	S/P	P	—	—	—
Variable intermittent windshield wipers (not available with Work Truck Package)	P	S	S	S	S
High Solar Energy-Absorbing (HSEA) glass	S	S	S	S	S
Sliding rear window with privacy glass	O	O	—	—	—
Power vertical sliding rear window with defogger and privacy glass	—	—	—	S	S
Power horizontal sliding rear window with privacy glass	—	O	S	—	—
Running boards	—	O	O	O	O
Front and rear mudguards	O/P	O/P	S	O/P	S
Deck Rail System with 4 adjustable tie-down cleats (not available on V6 Double Cab models)	O	O	S	O	S
Easy lower and lift tailgate	S	S	S	S	S
Deck rail and tailgate caps	S	S	S	S	S
Front tow hooks (standard on 4x4)	S/P	S/P	S/P	S/P	S/P

INTERIOR

Dual zone climate control with sync mode	S	S	—	S	—
Automatic dual zone climate control (driver and passenger)	—	—	S	—	S
AM/FM CD with MP3/WMA playback capability, 6 speakers (4 speakers on Regular Cab), XM compatible ⁷ (additional hardware and subscription required) and auxiliary audio jack	S	S	—	S	—
AM/FM CD with MP3/WMA playback capability, 6 speakers (4 speakers on Regular Cab), XM [®] Radio ⁴ (includes 90-day trial subscription), auxiliary audio jack, USB [®] port with iPod [®] connectivity, and hands-free phone capability and music streaming via Bluetooth [®] wireless technology	O	O	—	O	—
JBL [®] AM/FM 6-disc CD changer with MP3/WMA playback capability, 12 speakers with subwoofer (10 speakers on Double Cab), XM [®] Radio ⁴ (includes 90-day trial subscription), auxiliary audio jack, USB [®] port with iPod [®] connectivity, hands-free phone capability and music streaming via Bluetooth [®] wireless technology and steering wheel audio controls	—	O	S	O	S
Touch-screen DVD navigation system ¹⁰ with integrated backup camera ¹¹ AM/FM CD with MP3/WMA playback capability, 6 speakers (4 speakers on Regular Cab), XM compatible ⁷ (additional hardware and subscription required) and auxiliary audio jack	O	O	—	O	—
JBL [®] voice-activated touch-screen DVD navigation system ⁵ with integrated backup camera ¹¹ AM/FM 4-disc CD changer with MP3/WMA playback capability, 12 speakers with subwoofer (10 speakers on Double Cab), XM [®] Radio ⁴ with XM NavTraffic [®] (includes 90-day trial subscription), auxiliary audio jack, USB [®] port with iPod [®] connectivity, hands-free phone capability and music streaming via Bluetooth [®] wireless technology and steering wheel audio controls	—	—	O	—	O
Rear-seat DVD entertainment system with rear audio system, two wireless headphones ¹² wireless remote and two 115V AC outlets	—	—	—	O	O
Front 40/20/40 split-and-fold 8-way adjustable (4-way on Regular Cab) driver's and 4-way adjustable front passenger bench seat	S	S	—	S	—
Cloth-trimmed 8-way manual-adjustable (4-way on Regular Cab) driver's and 4-way adjustable front passenger bucket seats	O	O	—	O	—
Cloth-trimmed 8-way power-adjustable driver's and 4-way manual-adjustable front passenger bucket seats	—	O	—	O	—
Leather-trimmed and heated 10-way power-adjustable driver's and 4-way power-adjustable front passenger bucket seats	—	—	S	—	S
Driver and front passenger power lumbar support with driver power thigh support	—	—	S	—	S
2-way adjustable front headrests	S	S	S	S	S
Fold-up rear seat	—	S	S	—	—
Rear sliding, reclining and fold-flat seats	—	—	—	S	S
Rubber-type flooring	S	P	—	—	—
Carpet flooring	P	S	S	S	S
Cruise control	P	S	S	S	S
Tilt steering wheel with column shifter (bench seat)	S	S	—	S	—
Tilt/telescopic steering wheel with console shifter (bucket seats)	O	O	S	O	S
Speedometer, tripmeter and digital clock	S	S	S	S	S
Tachometer and outside temperature gauge (tachometer not available on V6 models)	P	S	S	S	S

S = Standard O = Optional — = Not available P = Available as part of a package

INTERIOR (CONTINUED)	REGULAR	DOUBLE		CREWMAX	
	TUNDRA	TUNDRA	LIMITED	TUNDRA	LIMITED
Transmission fluid temperature gauge (requires Tow Package)	S	P	S	P	S
Optitron gauges with Multi-Information Display with feature customization	—	—	S	—	S
Power windows, door locks and remote keyless entry system (not available with Work Truck Package)	P	S	S	S	S
Auto-dimming rearview mirror with HomeLink®13 universal transceiver, compass and maplamps	O	O	S	O	S
Backup camera ¹¹ linked with an auto-dimming mirror with monitor ¹¹	O	O	O	O	O
Overhead console	—	O	S	O	S
Center console with 12V power outlet (bucket seats)	O	O	S	O	S
Rear under-seat storage box (not available with JBL® audio)	—	O	O	—	—
2 front 12V powerpoints (additional rear 12V powerpoint on Double Cab and CrewMax)	S	S	S	S	S
Front maplamp (additional rear maplamp on Double Cab and CrewMax)	P	S	S	S	S
4 cup holders in first row, 2 cup holders in second row (Double Cab and CrewMax)	S	S	S	S	S
SAFETY AND CONVENIENCE					
STAR SAFETY SYSTEM™ Star Safety System™ – includes Vehicle Stability Control (VSC); ⁴ Traction Control (TRAC), Anti-lock Brake System (ABS) with Electronic Brake-force Distribution (EBD) and Brake Assist (BA) ¹⁵	S	S	S	S	S
Driver and front outboard passenger airbags with Advanced Airbag System ¹⁶	S	S	S	S	S
Driver and front outboard passenger seat-mounted side airbags and front and rear Roll-Sensing side Curtain Airbags (RSCA) ¹⁶	S	S	S	S	S
Driver and front outboard passenger knee airbags ¹⁶	S	S	S	S	S
Front passenger airbag cutoff switch ¹⁷	S	—	—	—	—
3-point seatbelts in all seating positions	S	S	S	S	S
Driver-side Emergency Locking Retractor (ELR) and Automatic/Emergency Locking Retractors (ALR/ELR) on all passenger seatbelts	S	S	S	S	S
Driver and front passenger seatbelt pretensioners with force limiters	S	S	S	S	S
LATCH (Lower Anchors and Tethers for CHildren) for outboard seating positions only; top tether anchor for center seat	S	—	—	—	—
LATCH (Lower Anchors and Tethers for CHildren) for rear outboard seating positions only; top tether anchor for rear center seat	—	S	S	S	S
Child-protector rear door locks	—	S	S	S	S
Tire Pressure Monitor System (TPMS) ¹⁸	S	S	S	S	S
Trailer-Sway Control (TSC) ¹⁹	S	S	S	S	S
Engine immobilizer ²⁰	O	O	S	O	S
Anti-theft alarm system	O	O	S	O	S
Front and rear parking assist sonar	O	O	S	O	S
WHEELS					
A – 18" steel wheels with P255/70R18 tires	S	S	—	S	—
B – 18" styled steel wheels with P255/70R18 tires	O	O	—	O	—
C – 18" alloy wheels with P275/65R18 tires	O	O	S	O	S
D – 20" Limited alloy wheels with P275/55R20 tires	—	—	O	—	O
E – 20" TRD Sport Package alloy wheels with P275/55R20 tires	P	P	O	P	O
F – 17" TRD Rock Warrior Package wheels with P275/70R17 tires	—	P	—	P	—
G – 18" TRD Off-Road Package alloy wheels with P275/65R18 BFGoodrich® tires (V8 only)	P	P	P	P	P
H – 20" Platinum Package alloy wheels with P275/55R20 tires	—	—	—	—	P



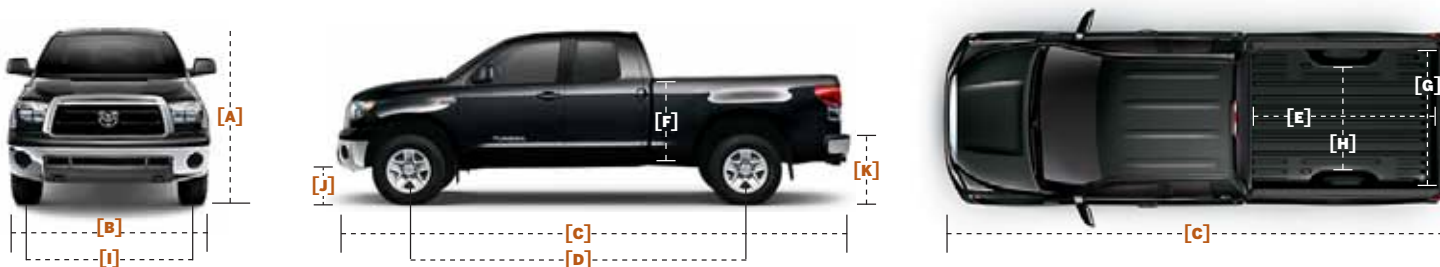
See numbered footnotes in Disclaimers section.

SPECIFICATIONS

MECHANICAL

	REGULAR		DOUBLE		CREWMAX	
	4x2	4x4	4x2	4x4	4x2	4x4
ENGINE						
4.0L DOHC 24-Valve V6 with Dual Independent Variable Valve Timing with intelligence (VVT-i), Horsepower: 270 hp @ 5600 rpm, Torque: 278 lb.-ft. @ 4400 rpm, aluminum block with aluminum heads, Acoustic Control Induction System (ACIS) — dual-stage intake manifold, Compression ratio: 10.4:1, Emissions: LEV-II	S	—	S	—	—	—
4.6L DOHC 32-Valve i-FORCE V8 with Dual Independent Variable Valve Timing with intelligence (VVT-i), Horsepower: 310 hp @ 5600 rpm, Torque: 327 lb.-ft. @ 3400 rpm, aluminum block with aluminum heads, Acoustic Control Induction System (ACIS) — dual-stage intake manifold, Compression ratio: 10.2:1, Emissions: ULEV-II	O	O	O	O	O	O
5.7L DOHC 32-Valve i-FORCE V8 with Dual Independent Variable Valve Timing with intelligence (VVT-i), Horsepower: 381 hp @ 5600 rpm, Torque: 401 lb.-ft. @ 3600 rpm, aluminum block with aluminum heads, Acoustic Control Induction System (ACIS) — dual-stage intake manifold, Compression ratio: 10.2:1, Emissions: ULEV-II	O	O	O	O	O	O
5.7L DOHC 32-Valve i-FORCE V8 with Dual Independent Variable Valve Timing with intelligence (VVT-i), Ethanol technology, Horsepower: 381 hp @ 5600 rpm, Torque: 401 lb.-ft. @ 3600 rpm, aluminum block with aluminum heads, Acoustic Control Induction System (ACIS) — dual-stage intake manifold, Compression ratio: 10.2:1, Emissions: ULEV-II, E85 Flex Fuel ²¹	O	O	O	O	O	O
MILEAGE ESTIMATES (city/highway)²²						
4.0L V6	16/20	—	16/20	—	—	—
4.6L V8	15/20	—	15/20	14/19	15/20	14/19
5.7L V8	14/18	13/17	14/18	13/17	14/18	13/17
DRIVETRAIN						
5-speed Electronically Controlled Transmission with intelligence (ECT-i), sequential shift mode and uphill/downhill shift logic (V6 models)	S	—	S	—	—	—
6-speed Electronically Controlled Transmission with intelligence (ECT-i), sequential shift mode and uphill/downhill shift logic, TOW/HAUL mode (4.6L and 5.7L V8 models with Tow Package)	O	S	O	S	S	S
4WDemand system with electronically controlled 2-speed transfer case	—	S	—	S	—	S
Automatic Limited-Slip Differential (Auto LSD)	S	S	S	S	S	S
RATIOS 4.0L V6						
1st gear	3.520	—	3.520	—	—	—
2nd gear	2.042	—	2.042	—	—	—
3rd gear	1.400	—	1.400	—	—	—
4th gear	1.000	—	1.000	—	—	—
5th gear	0.716	—	0.716	—	—	—
6th gear	—	—	—	—	—	—
Reverse	3.224	—	3.224	—	—	—
Rear differential ratio/ring gear size (in.)	3.909/9.5	—	3.909/9.5	—	—	—
Transfer case (high/low)	—	—	—	—	—	—
RATIOS 4.6L V8						
1st gear	3.520	3.520	3.520	3.520	3.520	3.520
2nd gear	2.042	2.042	2.042	2.042	2.042	2.042
3rd gear	1.400	1.400	1.400	1.400	1.400	1.400
4th gear	1.000	1.000	1.000	1.000	1.000	1.000
5th gear	0.716	0.716	0.716	0.716	0.716	0.716
6th gear	0.586	0.586	0.586	0.586	0.586	0.586
Reverse	3.224	3.224	3.224	3.224	3.224	3.224
Rear differential ratio/ring gear size (in.)	3.909/9.5	3.909/9.5	3.909/9.5	3.909/9.5	3.909/9.5	3.909/9.5
Transfer case (high/low)	—	1.000/2.618	—	1.000/2.618	—	1.000/2.618
RATIOS 5.7L V8						
1st gear	3.333	3.333	3.333	3.333	3.333	3.333
2nd gear	1.960	1.960	1.960	1.960	1.960	1.960
3rd gear	1.353	1.353	1.353	1.353	1.353	1.353
4th gear	1.000	1.000	1.000	1.000	1.000	1.000
5th gear	0.728	0.728	0.728	0.728	0.728	0.728
6th gear	0.588	0.588	0.588	0.588	0.588	0.588
Reverse	3.061	3.061	3.061	3.061	3.061	3.061
Rear differential ratio/ring gear size (in.)	4.100/10.5	4.100/10.5	4.100/10.5	4.100/10.5	4.100/10.5	4.100/10.5
Transfer case (high/low)	—	1.000/2.618	—	1.000/2.618	—	1.000/2.618
SUSPENSION						
Front independent coil-spring high-mounted double-wishbone with stabilizer bar and low-pressure nitrogen gas shocks; rear live axle with trapezoidal multi-leaf rear suspension and staggered outboard-mounted low-pressure nitrogen gas shocks	S	S	S	S	S	S
STEERING						
Hydraulic power rack-and-pinion steering	S	S	S	S	S	S
Steering wheel turns (lock-to-lock)	3.71	3.71	3.71	3.71	3.71	3.71
Turning circle diameter, curb to curb (ft.) (Standard Bed/Long Bed) (Short Bed on CrewMax)	39.2/44.0	39.2/44.0	39.2/44.0	39.2/44.0	44.0	44.0
BRAKES						
Power-assisted 4-wheel Anti-lock Brake System (ABS)	S	S	S	S	S	S
Front 13.9"-diameter ventilated disc	S	S	S	S	S	S
Rear 13.6"-diameter ventilated disc	S	S	S	S	S	S

	REGULAR		DOUBLE		CREWMAX	
	4x2	4x4	4x2	4x4	4x2	4x4
EXTERIOR DIMENSIONS (in.)						
A — Overall height	75.8	76.2	75.8	76.2	75.6	76.0
B — Overall width	79.9	79.9	79.9	79.9	79.9	79.9
C — Overall length (Standard Bed/Long Bed) (Short Bed on CrewMax)	209.8/228.7	209.8/228.7	228.7/246.7	228.7/246.7	228.7	228.7
D — Wheelbase (Standard Bed/Long Bed) (Short Bed on CrewMax)	126.8/145.7	126.8/145.7	145.7/164.6	145.7/164.6	145.7	145.7
E — Inside bed length (Standard Bed/Long Bed) (Short Bed on CrewMax)	78.7/97.6	78.7/97.6	78.7/97.6	78.7/97.6	66.7	66.7
F — Bed height	22.2	22.2	22.2	22.2	22.2	22.2
G — Bed width at tailgate	66.4	66.4	66.4	66.4	66.4	66.4
H — Bed width between wheelwells	50.0	50.0	50.0	50.0	50.0	50.0
I — Track (front/rear)	67.9/67.9	67.9/67.9	67.9/67.9	67.9/67.9	67.9/67.9	67.9/67.9
J — Ground clearance	10.2	10.6	10.2	10.4	10.0	10.4
K — Maximum load height	35.4	35.4	34.1	34.3	33.7	33.7



INTERIOR DIMENSIONS (in.)						
Head room (front)	40.2	40.2	40.2	40.2	40.2	40.2
Head room (2nd row)	—	—	38.7	38.7	38.7	38.7
Hip room (front)	63.0	63.0	63.0	63.0	63.0	63.0
Hip room (2nd row)	—	—	62.6	62.6	62.6	62.6
Leg room (front)	42.5	42.5	42.5	42.5	42.5	42.5
Leg room (2nd row)	—	—	34.7	34.7	44.5	44.5
Shoulder room (front)	66.7	66.7	66.6	66.6	66.6	66.6
Shoulder room (2nd row)	—	—	65.7	65.7	65.4	65.4
Maximum seating capacity	3	6	6	6	6	6
OFF-HIGHWAY						
Standard Bed approach (5.5' on CrewMax) (degrees)	27	28	28	29	28	29
Standard Bed departure (5.5' on CrewMax) (degrees)	26	27	25	25	25	24
Long Bed approach (degrees)	28	28	28	29	—	—
Long Bed departure (degrees)	25	27	20	20	—	—
WEIGHTS AND CAPACITIES						
CURB WEIGHT (lb.)						
Tundra 4.0L V6 (Standard Bed/Long Bed)	4580/4685	—	4950/—	—	—	—
Tundra 4.6L V8 (Standard Bed) (Short Bed on CrewMax)	4730	—	5085	5385	5250	5550
Tundra 5.7L V8 (Standard Bed/Long Bed) (Short Bed on CrewMax)	—/4910	5080/5180	5155/5355	5460	5335	5625
Limited 5.7L V8 (Standard Bed) (Short Bed on CrewMax)	—	—	5180	5480	5355	5645
GVWR (lb.)						
Tundra 4.0L V6 (Standard Bed/Long Bed)	6200/6400	—	6400/—	—	—	—
Tundra 4.6L V8 (Standard Bed) (Short Bed on CrewMax)	6600	6800	6700	6900	6800	7000
Tundra 5.7L V8 (Standard Bed/Long Bed) (Short Bed on CrewMax)	—/7000	6800/7200	6900/7000	7100/7200	7000	7200
Limited 5.7L V8 (Standard Bed) (Short Bed on CrewMax)	—	—	6900	7100	7000	7200
PAYLOAD²³ (lb.)						
Tundra 4.0L V6 (Standard Bed/Long Bed)	1620/1715	—	1450/—	—	—	—
Tundra 4.6L V8 (Standard Bed) (Short Bed on CrewMax)	1870	—	1615	1515	1550	1450
Tundra 5.7L V8 (Standard Bed/Long Bed) (Short Bed on CrewMax)	—/2090	1720/2020	1745/1645	1640/1540	1665	1575
Limited 5.7L V8 (Standard Bed) (Short Bed on CrewMax)	—	—	1720	1620	1645	1555
TOWING²⁴ (lb.)						
Tundra 4.0L V6 (Standard Bed/Long Bed)	4900/4800	—	4500	—	—	—
Tundra 4.6L V8 (Standard Bed) (Short Bed on CrewMax)	8600	—	8200	7900	8100	7700
Tundra 5.7L V8 (Standard Bed/Long Bed) (Short Bed on CrewMax)	—/10,400	9200/10,100	10,100/10,000	9700/9800	9900	9000
Limited 5.7L V8 (Standard Bed) (Short Bed on CrewMax)	—	—	10,000	9800	9300	9000

EXTERIOR COLORS



Black^{25, 26, 27}



Nautical Blue Metallic



Spruce Mica



Pyrite Mica



Barcelona Red Metallic²⁵



Radiant Red²⁶



Magnetic Gray Metallic²⁵



Silver Sky Metallic²⁵



Super White²⁷

Not all colors and trims are available on all models and packages. For more on interior and exterior color availability, go to toyota.com and click "Build Your Toyota" or visit your local Toyota dealer.

See numbered footnotes in Disclaimers section.

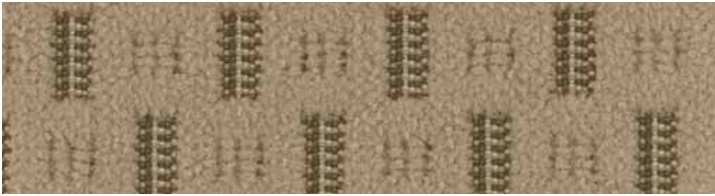
INTERIOR COLORS



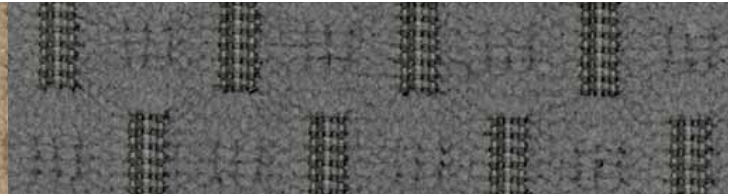
Graphite Vinyl²⁸



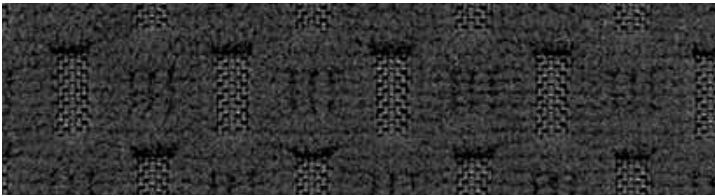
Graphite Fabric²⁹



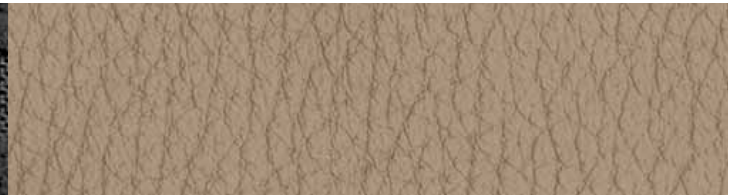
Sand Beige Fabric SR5 Package³⁰



Graphite Fabric SR5 Package



Black Fabric SR5 Package



Sand Beige Leather²⁹



Graphite Leather



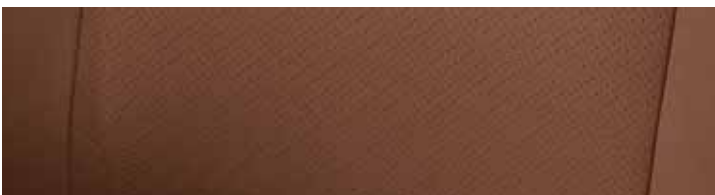
Red Rock Leather³⁰



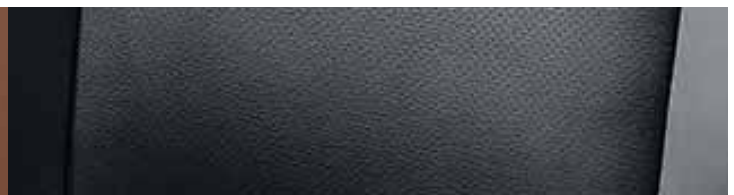
Perforated Sand Beige Leather³¹



Perforated Graphite Leather³¹



Perforated Red Rock Leather³¹



Perforated Black Leather³¹

See numbered footnotes in Disclaimers section.

GENUINE TOYOTA ACCESSORIES

You own it. But there are a few things you might want to do before it's really yours. Maybe it needs different wheels, tube steps, tie-downs, cross bars or a trailer brake controller for doing stuff that only matters to you. Whatever it is, ask your sales associate to see the Truck Customizing Guide, a soup-to-nuts catalog of Genuine Toyota accessories designed to give your Tundra the finishing touches that make it unmistakably yours. For a complete list of accessories, go to toyota.com/tundra

EXTERIOR

- 20" machined 5-star alloy wheels
- Brushed stainless-steel step boards
- Chrome exhaust tip
- Deck rail
- Doorsill protectors
- Front skid plate
- Hood protector
- Locking bike attachment
- Mini tie-downs with utility hook
- Tonneau cover
- Tube steps (Black or Chrome)

TOWING

- Tow hitch
- Trailer ball

INTERIOR

- Carpet floor mats
- Emergency assistance kit
- First aid kit
- Remote Engine Starter
- Seatback cargo net
- Under-seat storage

AUDIO

- BLU Logic® Hands Free System³²
- Wireless headphones¹²
- XM® Radio⁴

BED

- Bed cleats
- Bed extender
- Bed mat
- Bed rug
- Cargo divider
- Cargo net (exterior)
- Deck rail locking bike attachment

SECURITY

- Spare tire lock
- Vehicle Intrusion Protection (VIP) Glass Breakage Sensor (GBS)⁶
- Vehicle Intrusion Protection (VIP) RS3200 Security System³³
- Wheel locks

TRD PERFORMANCE

- TRD 17" off-road wheels
- TRD 22" 5-spoke forged aluminum wheels
- TRD billet aluminum oil cap
- TRD cold air intake system
- TRD high-performance brake kit
- TRD lowering kit
- TRD performance filter
- TRD side exit dual exhaust
- TRD supercharger³⁴

EXTERIOR



20" Machined 5-star Alloy Wheels



Brushed Stainless-steel Step Boards



Tube Steps (Black or Chrome)



Front Skid Plate



Tonneau Cover

INTERIOR



BLU Logic® Hands Free System³²



Remote Engine Starter



Seatback Cargo Net



Under-seat Storage



XM® Radio⁴

BED ACCESSORIES



Bed Extender



Bedliner



Bed Rug



Cargo Divider



Locking Bike Attachment

TRD PERFORMANCE



17" Off-road Wheels



22" Forged Wheels



High-performance Brake Kit



Performance Filter



Supercharger³⁴

See numbered footnotes in Disclaimers section.

PACKAGES¹

	REGULAR		DOUBLE		CREWMAX	
	TUNDRA		TUNDRA	LIMITED	TUNDRA	LIMITED
SR5 PACKAGE — Regular Cab includes chrome bumpers and grille surround, power windows/door locks/outside mirrors, cruise control, remote keyless entry system, variable intermittent windshield wipers, carpet flooring, SR5 fabric, passenger-side fold-flat seat and SR5 badge. (Double Cab and CrewMax include Tow Package and require Cold Weather Package only.)	V6	V8	V6	V8	V6	V8
COLOR-KEYED BUMPER PACKAGE — Includes color-keyed front and rear bumpers and grille surround, fog lamps and sliding rear window with privacy glass. (Deletes standard tow equipment.)	O	O	O	O	—	O
COLD WEATHER PACKAGE — Includes heavy-duty battery (not available on V6 models) and starter, windshield wiper de-icer grid with timer, and front and rear mudguards.	—	O	—	O	—	—
MEMORY PACKAGE — Includes power-adjustable driver's seat, power outside mirrors and tilt/telescopic steering wheel, all with memory function. (Not available with tow mirrors.)	O	O	O	O	S	O
TOW PACKAGE — Includes tow hitch receiver, trailer brake controller prewire, 4.300 rear axle ratio (4.100 on 4.6L V8), TOW/HAUL mode switch, transmission fluid temperature gauge, supplemental transmission cooler, engine oil cooler, 7-pin connector and heavy-duty alternator and battery.	—	—	—	—	O	—
	—	S	—	O	S	O

WORK TRUCK PACKAGE 4x2 AND 4x4

REGULAR | TUNDRA GRADE WITH V6 OR V8 ENGINES²

DOUBLE | TUNDRA GRADE WITH V6 OR V8 ENGINES

Includes matte black upper and lower front bumper with matte black grille surround, heavy-duty vinyl bench seat, rubber-type flooring, black instrument panel, manual door locks and windows, 2-speed windshield wipers and optional cruise control. Deletes remote keyless entry and courtesy lamps.



TUNDRA GRADE 4x2 AND 4x4

REGULAR | V6 OR V8 ENGINES²

DOUBLE | V6 OR V8 ENGINES

CREWMAX | V8 ENGINES

Includes color-keyed upper and chrome lower front bumper with chrome grille surround and rear bumper, engine skid plate, dual zone climate control with sync mode, power windows and door locks, variable intermittent windshield wipers, cloth interior and carpet flooring. Double Cab and CrewMax include the above plus SR5 cloth interior, and remote keyless entry system.

Vehicle shown with available 18" styled steel wheels.



TRD SPORT PACKAGE 4x2 ONLY

DOUBLE | TUNDRA GRADE WITH 5.7L V8

Includes 20" carved alloy wheels with P275/55R20 tires, color-keyed front and rear bumpers and grille surround, color-keyed heated outside mirrors, color-keyed door handles, fog lamps, black cloth interior with bucket seats and TRD Sport graphics. (Available in the following exterior colors: Black or Radiant Red only.)

Vehicle shown with additional TRD accessories.



See numbered footnotes in Disclaimers section.

TRD OFF-ROAD PACKAGE 4x2 AND 4x4

REGULAR | TUNDRA GRADE WITH V8

DOUBLE | TUNDRA AND LIMITED GRADE WITH V8

CREWMAX | TUNDRA AND LIMITED GRADE WITH V8

Includes off-road-tuned suspension, Bilstein® shocks, unique 18" alloy wheels with P275/65R18 BFGoodrich® tires, fog lamps (standard on Limited models), manual sliding rear window with privacy glass (Regular Cab models only), engine (4x2 models only) and fuel tank skid plates, front tow hooks (4x2 models only), TRD Off-Road Package graphics and Tow Package. (Excluding Limited and Regular Cab models.)



TRD ROCK WARRIOR PACKAGE 4x4 ONLY

DOUBLE | TUNDRA GRADE WITH 5.7L V8

CREWMAX | TUNDRA GRADE WITH 5.7L V8

Includes 17" TRD forged alloy wheels with LT285/70R17 BFGoodrich® All-Terrain T/A tires, Bilstein® shocks, color-keyed front bumper and grille surround, matte black rear bumper, fog lamps, manual sliding rear window with privacy glass (Double Cab), black cloth interior with manual bucket seats and TRD Rock Warrior graphics. (Available in the following exterior colors: Black, Radiant Red, Magnetic Gray Metallic or Super White only.)



LIMITED GRADE 4x2 AND 4x4

DOUBLE | V8 ENGINES

CREWMAX | V8 ENGINES

Includes color-keyed upper and lower front bumper, chrome rear bumper and chrome grille surround with matte silver billet-style inner grille, fog lamps, chrome outside mirrors and door handles, Deck Rail System, 18" alloy wheels, leather-trimmed interior with heated power front bucket seats, center console, JBL® AM/FM/MP3 CD player with Bluetooth®³ and XM® Radio⁴ with 90-day free trial, Optitron gauges and dual zone automatic climate control, Tow Package and Cold Weather Package.

Vehicle shown with available 20" Limited alloy wheels.



PLATINUM PACKAGE 4x2 AND 4x4

CREWMAX | LIMITED GRADE WITH 5.7L V8

Includes chrome lower front bumper, Memory Package, unique 20" alloy wheels with P275/55R20 tires, Daytime Running Lights (DRL), JBL® voice-activated touch-screen DVD navigation system⁵, power tilt/slide moonroof with sliding sunshade, perforated leather-trimmed seats, heated and ventilated power front bucket seats with embroidered headrests, wood-grain-style trim, auto up/down driver's and front passenger power windows, Glass Breakage Sensor (GBS)⁶ and Platinum badges. (Available in the following exterior colors: Black, Barcelona Red Metallic, Magnetic Gray Metallic and Silver Sky Metallic only.)



See numbered footnotes in Disclaimers section.

FEATURES¹

EXTERIOR

	REGULAR		DOUBLE		CREWMAX	
	TUNDRA	TUNDRA	LIMITED	TUNDRA	LIMITED	
Manual headlamp level control	S	S	S	S	S	S
Daytime Running Lights (DRL)	O	O	O	O	O	O
Fog lamps	O	O	S	O	S	
Matte black upper and lower front bumper with matte black grille surround	P	P	—	—	—	—
Color-keyed upper and chrome lower front bumper with chrome grille surround	S	S	—	S	P	
Color-keyed front bumper with chrome grille surround and matte silver billet-style inner grille	—	—	S	—	S	
Chrome rear bumper	S	S	S	S	S	S
Manual outside mirrors	S	P	—	—	—	—
Power outside mirrors	P	S	—	S	—	—
Heated power outside mirrors	O	O	—	O	—	—
Power-adjustable, heated outside tow mirrors with manual-extend, power-folding (Limited models only) and turn signal indicators	O	O	O	O	O	O
Chrome auto-dimming heated outside power mirrors with power-folding, puddle lamps (CrewMax Limited only) and turn signal indicators	—	—	S	—	S	
Power tilt/slide moonroof with sliding sunshade	—	—	—	O	O	
2-speed windshield wipers	S/P	P	—	—	—	—
Variable intermittent windshield wipers (not available with Work Truck Package)	P	S	S	S	S	S
High Solar Energy-Absorbing (HSEA) glass	S	S	S	S	S	S
Sliding rear window with privacy glass	O	O	—	—	—	—
Power vertical sliding rear window with defogger and privacy glass	—	—	—	S	S	
Power horizontal sliding rear window with privacy glass	—	O	S	—	—	—
Running boards	—	O	O	O	O	O
Front and rear mudguards	O/P	O/P	S	O/P	S	
Deck Rail System with 4 adjustable tie-down cleats (not available on V6 Double Cab models)	O	O	S	O	S	
Easy lower and lift tailgate	S	S	S	S	S	S
Deck rail and tailgate caps	S	S	S	S	S	S
Front tow hooks (standard on 4x4)	S/P	S/P	S/P	S/P	S/P	S/P

INTERIOR

Dual zone climate control with sync mode	S	S	—	S	—	
Automatic dual zone climate control (driver and passenger)	—	—	S	—	S	
AM/FM CD with MP3/WMA playback capability, 6 speakers (4 speakers on Regular Cab), XM compatible ⁷ (additional hardware and subscription required) and auxiliary audio jack	S	S	—	S	—	
AM/FM CD with MP3/WMA playback capability, 6 speakers (4 speakers on Regular Cab), XM [®] Radio ⁴ (includes 90-day trial subscription), auxiliary audio jack, USB [®] port with iPod [®] connectivity, and hands-free phone capability and music streaming via Bluetooth [®] wireless technology	O	O	—	O	—	
JBL [®] AM/FM 6-disc CD changer with MP3/WMA playback capability, 12 speakers with subwoofer (10 speakers on Double Cab), XM [®] Radio ⁴ (includes 90-day trial subscription), auxiliary audio jack, USB [®] port with iPod [®] connectivity, hands-free phone capability and music streaming via Bluetooth [®] wireless technology and steering wheel audio controls	—	O	S	O	S	
Touch-screen DVD navigation system ¹⁰ with integrated backup camera ¹¹ AM/FM CD with MP3/WMA playback capability, 6 speakers (4 speakers on Regular Cab), XM compatible ⁷ (additional hardware and subscription required) and auxiliary audio jack	O	O	—	O	—	
JBL [®] voice-activated touch-screen DVD navigation system ⁵ with integrated backup camera ¹¹ AM/FM 4-disc CD changer with MP3/WMA playback capability, 12 speakers with subwoofer (10 speakers on Double Cab), XM [®] Radio ⁴ with XM NavTraffic [®] (includes 90-day trial subscription), auxiliary audio jack, USB [®] port with iPod [®] connectivity, hands-free phone capability and music streaming via Bluetooth [®] wireless technology and steering wheel audio controls	—	—	O	—	O	
Rear-seat DVD entertainment system with rear audio system, two wireless headphones ¹² wireless remote and two 115V AC outlets	—	—	—	O	O	
Front 40/20/40 split-and-fold 8-way adjustable (4-way on Regular Cab) driver's and 4-way adjustable front passenger bench seat	S	S	—	S	—	
Cloth-trimmed 8-way manual-adjustable (4-way on Regular Cab) driver's and 4-way adjustable front passenger bucket seats	O	O	—	O	—	
Cloth-trimmed 8-way power-adjustable driver's and 4-way manual-adjustable front passenger bucket seats	—	O	—	O	—	
Leather-trimmed and heated 10-way power-adjustable driver's and 4-way power-adjustable front passenger bucket seats	—	—	S	—	S	
Driver and front passenger power lumbar support with driver power thigh support	—	—	S	—	S	
2-way adjustable front headrests	S	S	S	S	S	S
Fold-up rear seat	—	S	S	—	—	—
Rear sliding, reclining and fold-flat seats	—	—	—	S	S	
Rubber-type flooring	S	P	—	—	—	—
Carpet flooring	P	S	S	S	S	S
Cruise control	P	S	S	S	S	S
Tilt steering wheel with column shifter (bench seat)	S	S	—	S	—	—
Tilt/telescopic steering wheel with console shifter (bucket seats)	O	O	S	O	S	
Speedometer, tripmeter and digital clock	S	S	S	S	S	S
Tachometer and outside temperature gauge (tachometer not available on V6 models)	P	S	S	S	S	S

S = Standard O = Optional — = Not available P = Available as part of a package

INTERIOR (CONTINUED)	REGULAR	DOUBLE		CREWMAX	
	TUNDRA	TUNDRA	LIMITED	TUNDRA	LIMITED
Transmission fluid temperature gauge (requires Tow Package)	S	P	S	P	S
Optitron gauges with Multi-Information Display with feature customization	—	—	S	—	S
Power windows, door locks and remote keyless entry system (not available with Work Truck Package)	P	S	S	S	S
Auto-dimming rearview mirror with HomeLink®13 universal transceiver, compass and maplamps	O	O	S	O	S
Backup camera ¹¹ linked with an auto-dimming mirror with monitor ¹¹	O	O	O	O	O
Overhead console	—	O	S	O	S
Center console with 12V power outlet (bucket seats)	O	O	S	O	S
Rear under-seat storage box (not available with JBL® audio)	—	O	O	—	—
2 front 12V powerpoints (additional rear 12V powerpoint on Double Cab and CrewMax)	S	S	S	S	S
Front maplamp (additional rear maplamp on Double Cab and CrewMax)	P	S	S	S	S
4 cup holders in first row, 2 cup holders in second row (Double Cab and CrewMax)	S	S	S	S	S
SAFETY AND CONVENIENCE					
STAR SAFETY SYSTEM™ Star Safety System™ – includes Vehicle Stability Control (VSC); ⁴ Traction Control (TRAC), Anti-lock Brake System (ABS) with Electronic Brake-force Distribution (EBD) and Brake Assist (BA) ¹⁵	S	S	S	S	S
Driver and front outboard passenger airbags with Advanced Airbag System ¹⁶	S	S	S	S	S
Driver and front outboard passenger seat-mounted side airbags and front and rear Roll-Sensing side Curtain Airbags (RSCA) ¹⁶	S	S	S	S	S
Driver and front outboard passenger knee airbags ¹⁶	S	S	S	S	S
Front passenger airbag cutoff switch ¹⁷	S	—	—	—	—
3-point seatbelts in all seating positions	S	S	S	S	S
Driver-side Emergency Locking Retractor (ELR) and Automatic/Emergency Locking Retractors (ALR/ELR) on all passenger seatbelts	S	S	S	S	S
Driver and front passenger seatbelt pretensioners with force limiters	S	S	S	S	S
LATCH (Lower Anchors and Tethers for CHildren) for outboard seating positions only; top tether anchor for center seat	S	—	—	—	—
LATCH (Lower Anchors and Tethers for CHildren) for rear outboard seating positions only; top tether anchor for rear center seat	—	S	S	S	S
Child-protector rear door locks	—	S	S	S	S
Tire Pressure Monitor System (TPMS) ¹⁸	S	S	S	S	S
Trailer-Sway Control (TSC) ¹⁹	S	S	S	S	S
Engine immobilizer ²⁰	O	O	S	O	S
Anti-theft alarm system	O	O	S	O	S
Front and rear parking assist sonar	O	O	S	O	S
WHEELS					
A – 18" steel wheels with P255/70R18 tires	S	S	—	S	—
B – 18" styled steel wheels with P255/70R18 tires	O	O	—	O	—
C – 18" alloy wheels with P275/65R18 tires	O	O	S	O	S
D – 20" Limited alloy wheels with P275/55R20 tires	—	—	O	—	O
E – 20" TRD Sport Package alloy wheels with P275/55R20 tires	P	P	O	P	O
F – 17" TRD Rock Warrior Package wheels with P275/70R17 tires	—	P	—	P	—
G – 18" TRD Off-Road Package alloy wheels with P275/65R18 BFGoodrich® tires (V8 only)	P	P	P	P	P
H – 20" Platinum Package alloy wheels with P275/55R20 tires	—	—	—	—	P



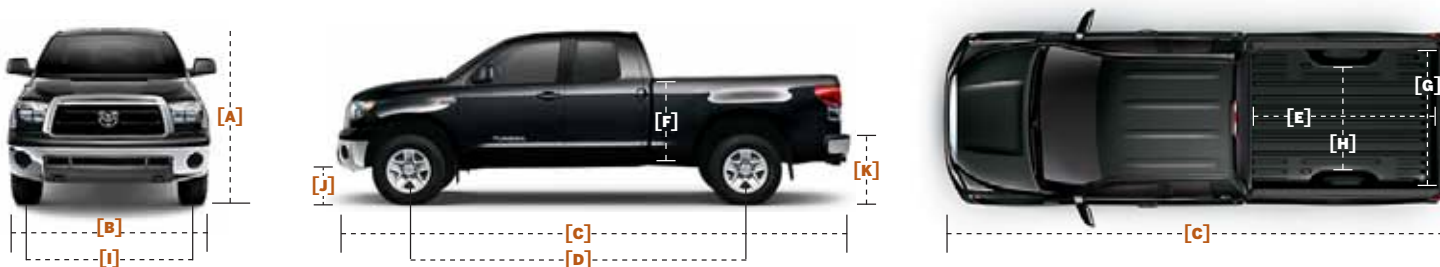
See numbered footnotes in Disclaimers section.

SPECIFICATIONS

MECHANICAL

	REGULAR		DOUBLE		CREWMAX	
	4x2	4x4	4x2	4x4	4x2	4x4
ENGINE						
4.0L DOHC 24-Valve V6 with Dual Independent Variable Valve Timing with intelligence (VVT-i), Horsepower: 270 hp @ 5600 rpm, Torque: 278 lb.-ft. @ 4400 rpm, aluminum block with aluminum heads, Acoustic Control Induction System (ACIS) — dual-stage intake manifold, Compression ratio: 10.4:1, Emissions: LEV-II	S	—	S	—	—	—
4.6L DOHC 32-Valve i-FORCE V8 with Dual Independent Variable Valve Timing with intelligence (VVT-i), Horsepower: 310 hp @ 5600 rpm, Torque: 327 lb.-ft. @ 3400 rpm, aluminum block with aluminum heads, Acoustic Control Induction System (ACIS) — dual-stage intake manifold, Compression ratio: 10.2:1, Emissions: ULEV-II	O	O	O	O	O	O
5.7L DOHC 32-Valve i-FORCE V8 with Dual Independent Variable Valve Timing with intelligence (VVT-i), Horsepower: 381 hp @ 5600 rpm, Torque: 401 lb.-ft. @ 3600 rpm, aluminum block with aluminum heads, Acoustic Control Induction System (ACIS) — dual-stage intake manifold, Compression ratio: 10.2:1, Emissions: ULEV-II	O	O	O	O	O	O
5.7L DOHC 32-Valve i-FORCE V8 with Dual Independent Variable Valve Timing with intelligence (VVT-i), Ethanol technology, Horsepower: 381 hp @ 5600 rpm, Torque: 401 lb.-ft. @ 3600 rpm, aluminum block with aluminum heads, Acoustic Control Induction System (ACIS) — dual-stage intake manifold, Compression ratio: 10.2:1, Emissions: ULEV-II, E85 Flex Fuel ²¹	O	O	O	O	O	O
MILEAGE ESTIMATES (city/highway)²²						
4.0L V6	16/20	—	16/20	—	—	—
4.6L V8	15/20	—	15/20	14/19	15/20	14/19
5.7L V8	14/18	13/17	14/18	13/17	14/18	13/17
DRIVETRAIN						
5-speed Electronically Controlled Transmission with intelligence (ECT-i), sequential shift mode and uphill/downhill shift logic (V6 models)	S	—	S	—	—	—
6-speed Electronically Controlled Transmission with intelligence (ECT-i), sequential shift mode and uphill/downhill shift logic, TOW/HAUL mode (4.6L and 5.7L V8 models with Tow Package)	O	S	O	S	S	S
4WDemand system with electronically controlled 2-speed transfer case	—	S	—	S	—	S
Automatic Limited-Slip Differential (Auto LSD)	S	S	S	S	S	S
RATIOS 4.0L V6						
1st gear	3.520	—	3.520	—	—	—
2nd gear	2.042	—	2.042	—	—	—
3rd gear	1.400	—	1.400	—	—	—
4th gear	1.000	—	1.000	—	—	—
5th gear	0.716	—	0.716	—	—	—
6th gear	—	—	—	—	—	—
Reverse	3.224	—	3.224	—	—	—
Rear differential ratio/ring gear size (in.)	3.909/9.5	—	3.909/9.5	—	—	—
Transfer case (high/low)	—	—	—	—	—	—
RATIOS 4.6L V8						
1st gear	3.520	3.520	3.520	3.520	3.520	3.520
2nd gear	2.042	2.042	2.042	2.042	2.042	2.042
3rd gear	1.400	1.400	1.400	1.400	1.400	1.400
4th gear	1.000	1.000	1.000	1.000	1.000	1.000
5th gear	0.716	0.716	0.716	0.716	0.716	0.716
6th gear	0.586	0.586	0.586	0.586	0.586	0.586
Reverse	3.224	3.224	3.224	3.224	3.224	3.224
Rear differential ratio/ring gear size (in.)	3.909/9.5	3.909/9.5	3.909/9.5	3.909/9.5	3.909/9.5	3.909/9.5
Transfer case (high/low)	—	1.000/2.618	—	1.000/2.618	—	1.000/2.618
RATIOS 5.7L V8						
1st gear	3.333	3.333	3.333	3.333	3.333	3.333
2nd gear	1.960	1.960	1.960	1.960	1.960	1.960
3rd gear	1.353	1.353	1.353	1.353	1.353	1.353
4th gear	1.000	1.000	1.000	1.000	1.000	1.000
5th gear	0.728	0.728	0.728	0.728	0.728	0.728
6th gear	0.588	0.588	0.588	0.588	0.588	0.588
Reverse	3.061	3.061	3.061	3.061	3.061	3.061
Rear differential ratio/ring gear size (in.)	4.100/10.5	4.100/10.5	4.100/10.5	4.100/10.5	4.100/10.5	4.100/10.5
Transfer case (high/low)	—	1.000/2.618	—	1.000/2.618	—	1.000/2.618
SUSPENSION						
Front independent coil-spring high-mounted double-wishbone with stabilizer bar and low-pressure nitrogen gas shocks; rear live axle with trapezoidal multi-leaf rear suspension and staggered outboard-mounted low-pressure nitrogen gas shocks	S	S	S	S	S	S
STEERING						
Hydraulic power rack-and-pinion steering	S	S	S	S	S	S
Steering wheel turns (lock-to-lock)	3.71	3.71	3.71	3.71	3.71	3.71
Turning circle diameter, curb to curb (ft.) (Standard Bed/Long Bed) (Short Bed on CrewMax)	39.2/44.0	39.2/44.0	39.2/44.0	39.2/44.0	44.0	44.0
BRAKES						
Power-assisted 4-wheel Anti-lock Brake System (ABS)	S	S	S	S	S	S
Front 13.9"-diameter ventilated disc	S	S	S	S	S	S
Rear 13.6"-diameter ventilated disc	S	S	S	S	S	S

	REGULAR		DOUBLE		CREWMAX	
	4x2	4x4	4x2	4x4	4x2	4x4
EXTERIOR DIMENSIONS (in.)						
A — Overall height	75.8	76.2	75.8	76.2	75.6	76.0
B — Overall width	79.9	79.9	79.9	79.9	79.9	79.9
C — Overall length (Standard Bed/Long Bed) (Short Bed on CrewMax)	209.8/228.7	209.8/228.7	228.7/246.7	228.7/246.7	228.7	228.7
D — Wheelbase (Standard Bed/Long Bed) (Short Bed on CrewMax)	126.8/145.7	126.8/145.7	145.7/164.6	145.7/164.6	145.7	145.7
E — Inside bed length (Standard Bed/Long Bed) (Short Bed on CrewMax)	78.7/97.6	78.7/97.6	78.7/97.6	78.7/97.6	66.7	66.7
F — Bed height	22.2	22.2	22.2	22.2	22.2	22.2
G — Bed width at tailgate	66.4	66.4	66.4	66.4	66.4	66.4
H — Bed width between wheelwells	50.0	50.0	50.0	50.0	50.0	50.0
I — Track (front/rear)	67.9/67.9	67.9/67.9	67.9/67.9	67.9/67.9	67.9/67.9	67.9/67.9
J — Ground clearance	10.2	10.6	10.2	10.4	10.0	10.4
K — Maximum load height	35.4	35.4	34.1	34.3	33.7	33.7



INTERIOR DIMENSIONS (in.)						
Head room (front)	40.2	40.2	40.2	40.2	40.2	40.2
Head room (2nd row)	—	—	38.7	38.7	38.7	38.7
Hip room (front)	63.0	63.0	63.0	63.0	63.0	63.0
Hip room (2nd row)	—	—	62.6	62.6	62.6	62.6
Leg room (front)	42.5	42.5	42.5	42.5	42.5	42.5
Leg room (2nd row)	—	—	34.7	34.7	44.5	44.5
Shoulder room (front)	66.7	66.7	66.6	66.6	66.6	66.6
Shoulder room (2nd row)	—	—	65.7	65.7	65.4	65.4
Maximum seating capacity	3	6	6	6	6	6
OFF-HIGHWAY						
Standard Bed approach (5.5' on CrewMax) (degrees)	27	28	28	29	28	29
Standard Bed departure (5.5' on CrewMax) (degrees)	26	27	25	25	25	24
Long Bed approach (degrees)	28	28	28	29	—	—
Long Bed departure (degrees)	25	27	20	20	—	—
WEIGHTS AND CAPACITIES						
CURB WEIGHT (lb.)						
Tundra 4.0L V6 (Standard Bed/Long Bed)	4580/4685	—	4950/—	—	—	—
Tundra 4.6L V8 (Standard Bed) (Short Bed on CrewMax)	4730	—	5085	5385	5250	5550
Tundra 5.7L V8 (Standard Bed/Long Bed) (Short Bed on CrewMax)	—/4910	5080/5180	5155/5355	5460	5335	5625
Limited 5.7L V8 (Standard Bed) (Short Bed on CrewMax)	—	—	5180	5480	5355	5645
GVWR (lb.)						
Tundra 4.0L V6 (Standard Bed/Long Bed)	6200/6400	—	6400/—	—	—	—
Tundra 4.6L V8 (Standard Bed) (Short Bed on CrewMax)	6600	6800	6700	6900	6800	7000
Tundra 5.7L V8 (Standard Bed/Long Bed) (Short Bed on CrewMax)	—/7000	6800/7200	6900/7000	7100/7200	7000	7200
Limited 5.7L V8 (Standard Bed) (Short Bed on CrewMax)	—	—	6900	7100	7000	7200
PAYLOAD²³ (lb.)						
Tundra 4.0L V6 (Standard Bed/Long Bed)	1620/1715	—	1450/—	—	—	—
Tundra 4.6L V8 (Standard Bed) (Short Bed on CrewMax)	1870	—	1615	1515	1550	1450
Tundra 5.7L V8 (Standard Bed/Long Bed) (Short Bed on CrewMax)	—/2090	1720/2020	1745/1645	1640/1540	1665	1575
Limited 5.7L V8 (Standard Bed) (Short Bed on CrewMax)	—	—	1720	1620	1645	1555
TOWING²⁴ (lb.)						
Tundra 4.0L V6 (Standard Bed/Long Bed)	4900/4800	—	4500	—	—	—
Tundra 4.6L V8 (Standard Bed) (Short Bed on CrewMax)	8600	—	8200	7900	8100	7700
Tundra 5.7L V8 (Standard Bed/Long Bed) (Short Bed on CrewMax)	—/10,400	9200/10,100	10,100/10,000	9700/9800	9900	9000
Limited 5.7L V8 (Standard Bed) (Short Bed on CrewMax)	—	—	10,000	9800	9300	9000

EXTERIOR COLORS



Black^{25, 26, 27}



Nautical Blue Metallic



Spruce Mica



Pyrite Mica



Barcelona Red Metallic²⁵



Radiant Red²⁶



Magnetic Gray Metallic²⁵



Silver Sky Metallic²⁵



Super White²⁷

Not all colors and trims are available on all models and packages. For more on interior and exterior color availability, go to toyota.com and click "Build Your Toyota" or visit your local Toyota dealer.

See numbered footnotes in Disclaimers section.

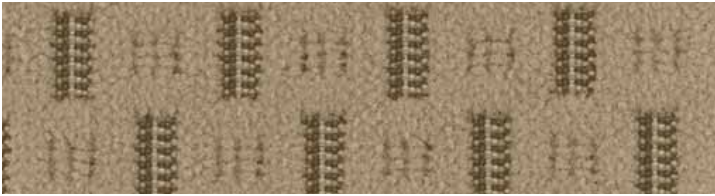
INTERIOR COLORS



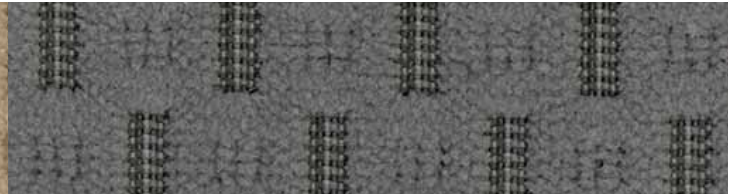
Graphite Vinyl²⁸



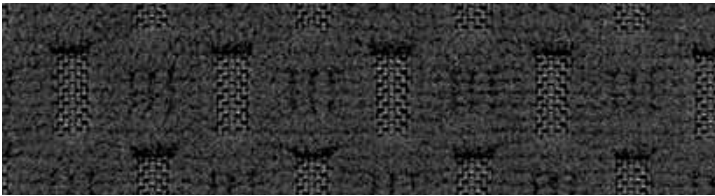
Graphite Fabric²⁹



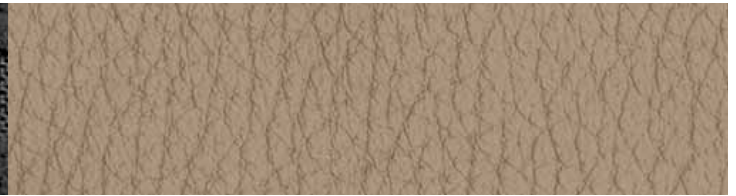
Sand Beige Fabric SR5 Package³⁰



Graphite Fabric SR5 Package



Black Fabric SR5 Package



Sand Beige Leather²⁹



Graphite Leather



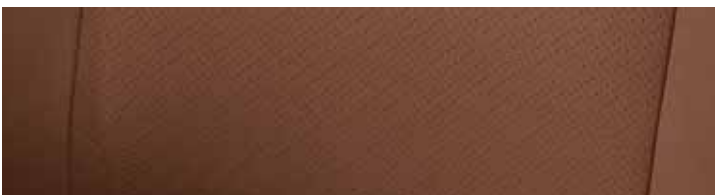
Red Rock Leather³⁰



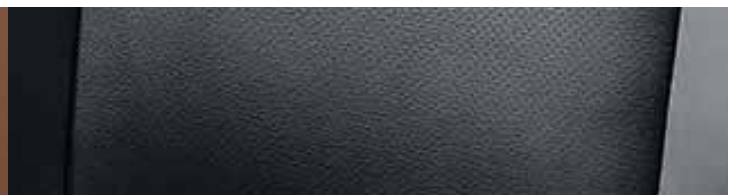
Perforated Sand Beige Leather³¹



Perforated Graphite Leather³¹



Perforated Red Rock Leather³¹



Perforated Black Leather³¹

See numbered footnotes in Disclaimers section.

GENUINE TOYOTA ACCESSORIES

You own it. But there are a few things you might want to do before it's really yours. Maybe it needs different wheels, tube steps, tie-downs, cross bars or a trailer brake controller for doing stuff that only matters to you. Whatever it is, ask your sales associate to see the Truck Customizing Guide, a soup-to-nuts catalog of Genuine Toyota accessories designed to give your Tundra the finishing touches that make it unmistakably yours. For a complete list of accessories, go to toyota.com/tundra

EXTERIOR

- 20" machined 5-star alloy wheels
- Brushed stainless-steel step boards
- Chrome exhaust tip
- Deck rail
- Doorsill protectors
- Front skid plate
- Hood protector
- Locking bike attachment
- Mini tie-downs with utility hook
- Tonneau cover
- Tube steps (Black or Chrome)

TOWING

- Tow hitch
- Trailer ball

INTERIOR

- Carpet floor mats
- Emergency assistance kit
- First aid kit
- Remote Engine Starter
- Seatback cargo net
- Under-seat storage

AUDIO

- BLU Logic® Hands Free System³²
- Wireless headphones¹²
- XM® Radio⁴

BED

- Bed cleats
- Bed extender
- Bed mat
- Bed rug
- Cargo divider
- Cargo net (exterior)
- Deck rail locking bike attachment

SECURITY

- Spare tire lock
- Vehicle Intrusion Protection (VIP) Glass Breakage Sensor (GBS)⁶
- Vehicle Intrusion Protection (VIP) RS3200 Security System³³
- Wheel locks

TRD PERFORMANCE

- TRD 17" off-road wheels
- TRD 22" 5-spoke forged aluminum wheels
- TRD billet aluminum oil cap
- TRD cold air intake system
- TRD high-performance brake kit
- TRD lowering kit
- TRD performance filter
- TRD side exit dual exhaust
- TRD supercharger³⁴

EXTERIOR



20" Machined 5-star Alloy Wheels



Brushed Stainless-steel Step Boards



Tube Steps (Black or Chrome)



Front Skid Plate



Tonneau Cover

INTERIOR



BLU Logic® Hands Free System³²



Remote Engine Starter



Seatback Cargo Net



Under-seat Storage



XM® Radio⁴

BED ACCESSORIES



Bed Extender



Bedliner



Bed Rug



Cargo Divider



Locking Bike Attachment

TRD PERFORMANCE



17" Off-road Wheels



22" Forged Wheels



High-performance Brake Kit



Performance Filter



Supercharger³⁴

See numbered footnotes in Disclaimers section.

DISCLAIMERS

1. Toyota strives to build vehicles to match customer interest and thus they typically are built with popular options and option packages. Not all options/packages are available separately and some may not be available in all regions of the country. See toyota.com for information about options/packages commonly available in your area. If you would prefer a vehicle without any or with different options, contact your dealer to check for current availability or the possibility of placing a special order. 2. Standard Bed not available with 5.7L V8. 3. The Bluetooth® word mark and logos are registered trademarks owned by Bluetooth SIG, Inc. and any use of such marks by Toyota is under license. Other trademarks and trade names are those of their respective owners. The Bluetooth® wireless technology phones listed on toyota.com have been tested for compatibility with Toyota vehicles. Performance will vary based on phone software version, coverage and your wireless carrier. Phones are warranted by their manufacturer, not Toyota. 4. Satellite radio requires an XM® monthly service fee. See your Toyota dealer for further details. Reception of the satellite signal may vary depending on location. All fees and programming subject to the terms and conditions available at www.xmradio.com. Available only in the 48 contiguous United States. 5. The navigation system is designed to assist in locating an address or point of interest. XM NavTraffic® requires a monthly service fee and hardware and is designed to provide real-time traffic or alternative routes of travel. Discrepancies may be encountered between the system and your actual location. Road system changes may affect the accuracy of the information provided. Rely on your common sense to decide whether to follow a specified route. Detailed coverage not available in every city or roadway. Periodic navigation updates available at an additional cost. See your *Navigation System Owner's Manual* for further details. 6. Available for vehicles with factory security. 7. Functioning XM® Radio requires a compatible receiver and monthly service fee. See your Toyota dealer for further details. Reception of the satellite signal may vary depending on location. All fees and programming subject to change. Subscriptions subject to the terms and conditions available at www.xmradio.com. Available only in the 48 contiguous United States. 8. May not be compatible with all MP3/WMA players and like models. 9. iPod® is a registered trademark of Apple, Inc. All rights reserved. 10. The navigation system is designed to assist in locating an address or point of interest. Discrepancies may be encountered between the system and your actual location. Road system changes may affect the accuracy of the information provided. Rely on your common sense to decide whether to follow a specified route. Detailed coverage not available in every city or roadway. Periodic updates available at an additional cost. See your *Navigation System Owner's Manual* for further details. 11. The backup camera does not provide a comprehensive view of the rear area of the vehicle. You should also look around outside your vehicle and use your mirrors to confirm rearward clearance. Cold weather will limit effectiveness and view may become cloudy. 12. Headphones are for passenger use only. Do not use while operating vehicle. 13. HomeLink® is a registered trademark of Johnson Controls, Inc. 14. Vehicle Stability Control (VSC) is an electronic system designed to help the driver maintain vehicle control under adverse conditions. It is not a substitute for safe driving practices. Factors including speed, road conditions and driver steering input can all affect whether VSC will be effective in preventing a loss of control. Please see your *Owner's Manual* for further details. 15. Brake Assist is designed to help the driver take full advantage of the benefits of ABS. It is not a substitute for safe driving practices. Braking effectiveness also depends on proper brake-system maintenance and tire and road conditions. 16. All the airbag (AB) systems are Supplemental Restraint Systems. All ABs (if installed) are designed to inflate only under certain conditions and in certain types of severe collisions: frontal and knee ABs typically inflate in frontal collisions; side and side curtain ABs in side collisions; Roll-Sensing Curtain ABs at a severe tilt degree, roll or lateral G-force. In all other accidents, the ABs will not inflate. To decrease the risk of injury from an inflating AB, always wear seatbelts, sit upright in the middle of the seat as far back as possible and do not lean against the door. Do not put objects in front of an AB or around the seatback. Do not use a rearward-facing child seat in any front passenger seat. The force of an inflating AB may cause serious injury or death. See your *Owner's Manual* for further information/warnings. 17. Do not use rearward-facing child seats in any front passenger seat without switching off the passenger-side airbag. Please see your *Owner's Manual* for details. 18. The Toyota Tire Pressure Monitor alerts the driver when tire pressure is critically low. For optimal tire wear and performance, tire pressure should be checked regularly with a gauge; do not rely solely on the monitor system. See your *Owner's Manual* for details. 19. Trailer-Sway Control (TSC) is an electronic system designed to help the driver maintain vehicle control under adverse conditions. It is not a substitute for safe driving practices. Factors including speed, road conditions and driver steering input can all affect whether TSC will be effective in preventing a loss of control. Please see your *Owner's Manual* for further details. 20. The engine immobilizer is a state-of-the-art anti-theft system. When you insert your key into the ignition switch, the key transmits an electronic code to the vehicle. The engine will only start if the code in the transponder chip inside the key matches the code in the vehicle's immobilizer. Because the transponder chip is embedded in the key, it can be costly to replace. If you lose a key, your Toyota dealer can help, or you can find a qualified independent locksmith to replace your key or perform high-security key services at www.aloa.org. 21. Flex Fuel Vehicles not available in every state. In states where available, all 4x4 5.7L V8 models are FFV. Flex Fuel Vehicles use E85, gasoline or a combination of both. Estimated mileage will vary. Consult your dealer for nearest E85 filling stations. See toyota.com for further details. 22. 2011 EPA-estimated mileage. Actual mileage will vary. 23. Payload is the GVWR minus curb weight and includes weight of occupants, optional equipment and cargo, limited by weight distribution. Payload is not the Vehicle Capacity Weight as defined by FMVSS 110, which will vary according to installed optional equipment. Calculated with new SAE J2807 method. 24. Before towing, confirm your vehicle and trailer are compatible, hooked up and loaded properly and that you have any necessary additional equipment. Do not exceed any Weight Ratings and follow all instructions in your *Owner's Manual*. The maximum you can tow depends on the total weight of any cargo, occupants and available equipment. Calculated with new SAE J2807 method. 25. Platinum Package available with Black, Barcelona Red Metallic, Magnetic Gray Metallic or Silver Sky Metallic only. 26. TRD Sport Package available with Black or Radiant Red only. 27. TRD Rock Warrior Package available with Black or Super White only. 28. Available with Work Truck Package only. 29. Not available with Magnetic Gray Metallic or Silver Sky Metallic. 30. Not available with Spruce Mica or Radiant Red. 31. Available with Platinum Package on Black, Barcelona Red Metallic, Magnetic Gray Metallic or Silver Sky Metallic only. 32. Performance of BLU Logic compatible phones will vary based on phone software version, coverage, and your wireless carrier. See www.blulogicupdate.com for more details. 33. Available for vehicles with factory remote keyless entry. 34. The TRD supercharger is to be sold only as a dealer-installed or over-the-counter option after retail sale of the vehicle. The supercharger may not be sold to the customer at the same time as the new vehicle and may not be financed together with the new vehicle. The TRD supercharger is not compatible with Flex Fuel Vehicles.

TOYOTA FINANCIAL SERVICES*



Get more with the Toyota Rewards Visa – the card that earns as you spend. Because the more you use it, the more you get.

Turn everything you buy into points to redeem toward service, parts, accessories or an eligible vehicle purchase or lease; earn 5 points for every \$1 spent at participating Toyota dealers and 1 point for every \$1 spent everywhere else Visa is accepted.² Enjoy all these benefits without an annual fee and without an annual cap on points earned or redeemed. Visit www.toyotarewardsvisa.com or call 866-614-8845 for complete details. For more information on Toyota Financial Services' competitive financing, visit www.toyotafinancial.com

¹On approved credit. Terms, conditions and restrictions apply and are fully described in the Toyota Rewards Visa Cardmember Agreement and the Toyota Rewards Program Terms and Conditions. Points redemption not available at Hawaii dealerships. Points cannot be redeemed for cash.

²Your Toyota dealer may impose restrictions on the use of credit cards related to vehicle purchases or leases. *The creditor and issuer of the Toyota Rewards Visa is Toyota Financial Savings Bank. Toyota Financial Services is a service mark used by Toyota Motor Credit Corporation and Toyota Financial Savings Bank. Financing is available to qualified customers through participating Toyota dealers and Toyota Motor Credit Corporation.

WARRANTIES

Every Toyota Car, Truck and SUV is built to exceptional standards. And that's not idle boasting. We back it up with these Limited Warranty Coverages:

Basic: 36 months/36,000 miles (all components other than normal wear and maintenance items).

Powertrain: 60 months/60,000 miles (engine, transmission/transaxle, front-wheel drive, rear-wheel drive, seatbelts and airbags).

Rust-Through: 60 months/unlimited miles (corrosion perforation of sheet metal).

Emissions: Coverages vary under Federal and California regulations. Refer to applicable *Warranty and Maintenance Guide* for details.

Accessories: For Genuine Toyota accessories purchased at the time of the new vehicle purchase, the Toyota Accessory Warranty coverage is in effect for 36 months/36,000 miles from the vehicle's in-service date, which is the same coverage as the Toyota New Vehicle Limited Warranty. For Genuine Toyota accessories purchased after the new vehicle purchase the coverage is 12 months, regardless of mileage, from the date the accessory was installed on the vehicle, or the remainder of any applicable new vehicle warranty, whichever provides greater coverage, with the exception of car covers. Car covers are warranted for 12 months from the date of purchase and do not assume any coverage under the Toyota New Vehicle Limited Warranty.

You may be eligible for transportation assistance if it's necessary that your vehicle be kept overnight for repairs covered under warranty. Please see your authorized Toyota dealership for further details.

For complete details about Toyota's warranties, please visit www.toyota.com, refer to the applicable *Warranty and Maintenance Guide* or see your Toyota dealer.

Toyota Tundra is designed to meet most off-road driving requirements. Abusive use may result in bodily harm or damage. Toyota encourages responsible operation to protect you, your vehicle and the environment. Seatbelts should be worn at all times. Please do not allow passengers to ride in the cargo area. Towing hitch receivers/ball mount kits are not intended to provide crash protection.

For details on vehicle specifications, standard features and available equipment in your area, contact your Toyota dealer. A vehicle with particular equipment may not be available at the dealership. Ask your Toyota dealer to help locate a specifically equipped vehicle.

All information presented herein is based on data available at the time of posting, is subject to change without notice and pertains specifically to mainland U.S.A. vehicles only.



For Toyota Mobility program details, go to www.toyota.com/mobility or call the Toyota Customer Assistance Center at 1-800-331-4331

