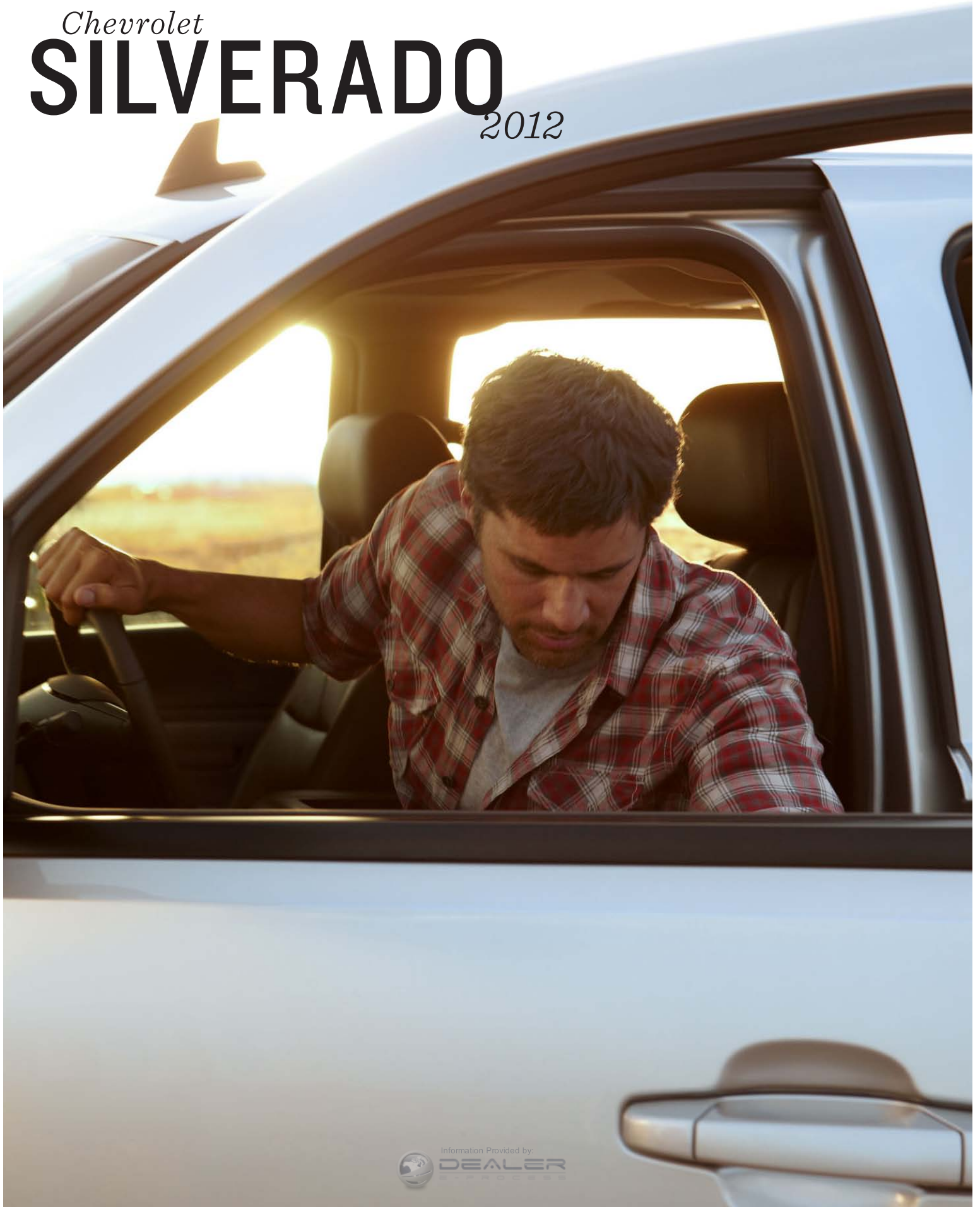


*Chevrolet*  
**SILVERADO**  
2012





#### AT A GLANCE

Choice of Regular Cab, Extended Cab or Crew Cab models  
Choice of 2WD or 4x4 models  
Available automatic locking rear differential  
StabiliTrak® Electronic Stability Control and Traction Control

Silverado 1500 Crew Cab LTZ 4x4 shown in Silver Ice Metallic with available features and dealer-installed Chevy Accessories.

## SILVERADO IS STRONG BACKUP FOR YOU.

Substantial and strong, Silverado is there from sunup to sundown. Whether taking on mud-rutted back roads or steep mountain grades, towing a boat or hauling stacks of drywall, this is one full-size pickup that charges ahead. The drive comes from a standard Vortec™ 5.3L V8 engine that generates **315 HORSEPOWER** and offers an EPA-estimated **15 MPG CITY/22 HIGHWAY** on XFE. And while brawn doesn't take a break, that doesn't mean it never kicks back. Step inside the Silverado cab and you'll experience a den of comfort within a hard-nosed exterior.

Extended Cab models can **HAUL 1,908 LBS. OF PAYLOAD<sup>1</sup>** or **TOW 10,700 LBS.<sup>2</sup>** using the available **MAX TRAILERING PACK**. New this year—available **TRAILER SWAY CONTROL, HILL START ASSIST** and **CRUISE GRADE BRAKING** help keep trailers in line.

For those times when you need your truck to go overland without hesitation, the available Z71 Off-Road Package offers **SKID PLATES**, jounce bumpers and an **AUTOMATIC LOCKING REAR DIFFERENTIAL**. And to guarantee the quality, Silverado offers a 100,000-mile/5-year<sup>3</sup> Powertrain Limited Warranty, along with Roadside Assistance and Courtesy Transportation Programs. It's the best coverage of any full-size pickup. You've heard it before, but some things bear repeating: **SILVERADO—THE MOST DEPENDABLE, LONGEST-LASTING FULL-SIZE PICKUPS ON THE ROAD.<sup>4</sup>**

<sup>1</sup> Maximum payload capacity includes weight of driver, passengers, optional equipment and cargo. <sup>2</sup> Maximum trailer weight ratings are calculated assuming a base vehicle, except for any option(s) necessary to achieve the rating, plus driver. The weight of other optional equipment, passengers and cargo will reduce the maximum trailer weight your vehicle can tow. See your Chevy dealer for additional details. <sup>3</sup> Whichever comes first. See dealer for details. <sup>4</sup> Dependability based on longevity: 1981–July 2010 full-size pickup registrations.



Information Provided by  
**DEALERS**

Silverado 1500 Crew Cab All-Star Edition 4x4 shown in Black with available dealer-installed Chevy Accessories.



# FORCE MULTIPLIER



Power used to be as simple as engines firing and driveshafts turning. But our engineers keep finding ways to produce more punch per piston, more crank per cam, and more output. Each of the three V8 engines delivers over 300 horsepower and over 300 lb.-ft. of torque.

The available Vortec 6.2L V8 generates a massive 403 horsepower and 417 lb.-ft. of torque. Packed together under every hood, each technology acts as a multiplier, increasing overall performance.

But numbers mean nothing on paper—power only matters where the rubber meets the road. That's where Silverado advanced engine technology shines—refining power, maximizing drive and adding efficiency. The first multiplier: **ACTIVE FUEL MANAGEMENT™** features

a patented cylinder deactivation system, which shuts down engine cylinders when they're not needed, improving efficiency during light driving. **VARIABLE VALVE TIMING**, another multiplier, optimizes both low-revving torque and high-performance horsepower, while also increasing engine efficiency. More multiplying technologies: an available Hydra-Matic® **6-SPEED AUTOMATIC TRANSMISSION** which maximizes acceleration with a steep first gear and provides quiet, low-rpm highway cruising with a tall overdrive. An Oil-Life Monitor tracks the condition of your oil, and lets you know exactly when it needs to be changed.

All told, it might sound pretty complex. Actually, it's quite simple. Small refinements over time equal a powerful force.

Information Provided by

IDEAL

# PULL TO PLAY



## AT A GLANCE

- Available MAX Trailering Pack with Vortec 6.2L V8
- Available Trailer Sway Control feature (not available on Hybrid)
- Available automatic locking rear differential
- Independent front coil-over-shock suspension
- Rear suspension with multi-leaf, two-stage rear springs

Silverado 1500 Crew Cab LTZ 4x4  
shown in Blue Granite Metallic.



Sometimes full-on fun requires big gear, the kind you drag behind you, like fishing boats, travel trailers and ORVs. The last thing you want on your getaway is to feel the trailer swaying behind you.

That's why our engineers adapted **INTELLIGENT TECHNOLOGY** used in heavy-duty work trucks for the Silverado 1500. That and pure muscle work to help keep unruly trailers in their place. With the available **MAX TRAILERING PACK**, Extended Cab models can tow 10,700 lbs!<sup>1</sup> (10,600 lbs. with Crew Cab models). A stout **9.5-INCH REAR AXLE** handles even the kind of horsepower and torque that the available Vortec 6.2L V8 engine generates. Under certain conditions, the available GM segment-exclusive **AUTOMATIC LOCKING REAR DIFFERENTIAL** directs power to the wheel that has the most traction, propelling you through loose gravel and slick surfaces.

From the start of your trip, the available **REAR VISION CAMERA SYSTEM**, integrated into the rearview mirror or the navigation screen if so equipped, makes hooking up the easiest part of trailering. Once you've got your load on the road, standard **TOW/HAUL MODE** adjusts the shift schedule in the automatic transmission so it isn't "hunting" for the correct gear while towing or trailering.

New available **TRAILER SWAY CONTROL** works in conjunction with the StabiliTrak Electronic Stability Control System to help keep you on track. When you're trailering in hill country, available Hill Start Assist holds the truck stationary for about a second after the brake is released, giving the driver time to accelerate before the truck can roll backward.

**CRUISE GRADE BRAKING**, on the available **6-SPEED AUTOMATIC TRANSMISSION**, automatically downshifts to help slow the truck and preserve your brake pads on long, steep descents. An available trailer brake controller fully integrates with the Silverado antilock braking system.

Meanwhile, **STABILITRAK** Electronic Stability Control System helps you keep your vehicle—and your trailer—on the path being steered by sensing a loss of lateral traction and responding by adjusting the engine output and brakes accordingly. Simply put, Silverado's trailering ability comes from a combination of power and technology. When it's time to get out there and play, we're pulling for you.

Information Provided by GM. <sup>1</sup>Maximum trailer weight ratings are calculated assuming a base vehicle, except for any option(s) necessary to achieve the rating, plus driver. The weight of other optional equipment, passengers and cargo will reduce the maximum trailer weight your vehicle can tow. See your Chevy dealer for additional details.

# 1500 CONVENTIONAL TRAILERING<sup>1</sup> (LBS.)

Weight-carrying hitch limit: 5,000-lb. trailer with 600-lb. tongue weight. Z85 Handling/Trailer suspension or Z71 Off-Road suspension and a weight-distributing hitch with sway control required over 5,000-lb. trailer weight. Please read the Trailing Basics on the next page before towing a trailer with any Chevy truck.

			REGULAR CAB				EXTENDED CAB				CREW CAB	
Engine	Axle Ratio	GCWR <sup>2</sup>	Standard Box 2WD	Long Box 2WD	Standard Box 4x4	Long Box 4x4	Standard Box 2WD	Long Box 2WD	Standard Box 4x4	Long Box 4x4	Short Box 2WD	Short Box 4x4
Vortec 4.3L V6	3.73	10,000	5,400	5,200	5,100	4,900	—	—	—	—	—	—
	3.23	9,500	4,800	4,700	—	—	4,400	—	—	—	—	—
Vortec 4.8L V8	3.73	12,000	7,200	7,100	—	—	6,700	—	—	—	6,700	—
	3.42	11,000	—	—	6,000	5,800	—	—	5,500	—	—	5,500
	3.23	10,000	—	5,100	—	—	4,700	—	—	—	4,700	—
	3.23	9,500	4,700	—	—	—	—	—	—	—	—	—
Vortec 5.3L V8 with Heavy-Duty Cooling Package	3.42	15,000	—	10,000	—	9,800	9,700	9,500	9,600	9,300	9,600	9,500
	3.42	14,000	9,100	—	8,900	—	—	—	—	—	—	—
	3.08	12,200	7,400	7,200	7,100	7,000	6,900	6,700	6,800	6,500	6,900	6,700
Vortec 5.3L V8 XFE	3.08	12,200	—	—	—	—	—	—	—	—	7,000	—
Vortec 5.3L V8	3.08	11,500	6,600	6,500	6,400	6,300	6,200	6,000	6,100	5,800	6,200	6,000
Vortec 6.0L Hybrid <sup>3</sup>	3.08	12,000	—	—	—	—	—	—	—	—	6,100	5,900
Vortec 6.2L V8 with MAX Trailing Pack	3.73	16,000	—	—	—	—	10,700	—	10,400	—	10,600	10,400
Vortec 6.2L V8	3.42	15,000	—	—	—	—	9,700	—	9,400	—	9,700	9,400

<sup>1</sup> Maximum trailer weight ratings are calculated assuming a base vehicle, except for any option(s) necessary to achieve the rating, plus driver. The weight of other optional equipment, passengers and cargo will reduce the maximum trailer weight your vehicle can tow. See your Chevy dealer for additional details. <sup>2</sup> Gross Combination Weight Rating. <sup>3</sup> Available at participating dealers. NOTE: Trailer tongue weight should be 10 to 15% of total loaded trailer weight. Trailer kingpin weight should be 15 to 25% of total loaded trailer weight. Addition of trailer tongue weight/trailer kingpin weight cannot cause vehicle weights to exceed Rear Gross Axle Weight Rating (RGAWR) or Gross Vehicle Weight Rating (GVWR). These ratings can be found on the certification label located on the driver door or doorframe. See the Trailing Basics for more trailing information.

# 1500 FIFTH-WHEEL TRAILERING<sup>1</sup> (LBS.)

Fifth-wheel trailering with a Silverado 1500 requires Z85 Handling/Trailer suspension or Z71 Off-Road suspension. Please read the Trailing Basics on the next page before towing a trailer with any Chevy truck.

			REGULAR CAB			EXTENDED CAB			
Engine	Axle Ratio	GCWR <sup>2</sup>	Long Box 2WD	Standard Box 4x4	Long Box 4x4	Standard Box 2WD	Long Box 2WD	Standard Box 4x4	Long Box 4x4
Vortec 5.3L V8 with Heavy-Duty Cooling Package	3.42	15,000	8,900	—	9,700	9,400	9,000	9,600	8,100
	3.42	14,000	—	8,200	—	—	—	—	—
Vortec 6.2L V8 with MAX Trailing Pack	3.73	16,000	—	—	—	10,600	—	10,300	—
Vortec 6.2L V8	3.42	15,000	—	—	—	9,400	—	9,100	—

<sup>1</sup> Maximum trailer weight ratings are calculated assuming a base vehicle, except for any option(s) necessary to achieve the rating, plus driver. The weight of other optional equipment, passengers and cargo will reduce the maximum trailer weight your vehicle can tow. See your Chevy dealer for additional details. <sup>2</sup> Gross Combination Weight Rating. NOTE: Trailer tongue weight should be 10 to 15% of total loaded trailer weight. Trailer kingpin weight should be 15 to 25% of total loaded trailer weight. Addition of trailer tongue weight/trailer kingpin weight cannot cause vehicle weights to exceed Rear Gross Axle Weight Rating (RGAWR) or Gross Vehicle Weight Rating (GVWR). These ratings can be found on the certification label located on the driver door or doorframe. Fifth-wheel hitch is available as a dealer-installed accessory on select models. See the Trailing Basics for more trailing information.

# 1500 MAXIMUM PAYLOAD<sup>1</sup> (LBS.)

Engine	GVWR <sup>2</sup>	REGULAR CAB				EXTENDED CAB				CREW CAB	
		Standard Box 2WD	Long Box 2WD	Standard Box 4x4	Long Box 4x4	Standard Box 2WD	Long Box 2WD	Standard Box 4x4	Long Box 4x4	Short Box 2WD	Short Box 4x4
Vortec 4.3L V8	6,400	1,940	1,804	1,714	1,549	1,515	—	—	—	—	—
Vortec 4.8L V8	7,000	—	—	—	—	—	—	1,726	—	—	1,659
	6,800	—	—	—	1,827	1,783	—	—	—	1,701	—
	6,400	1,810	1,676	1,598	—	—	—	—	—	—	—
Vortec 5.3L V8 XFE	6,700	—	—	—	—	—	—	—	—	1,648	—
Vortec 5.3L V8	7,000	—	—	—	—	—	—	1,794	1,513	—	1,712
	6,900	—	—	—	—	—	1,641	—	—	—	—
	6,800	—	—	—	1,794	1,755	—	—	—	1,634	—
	6,400	1,757	1,635	1,550	—	—	—	—	—	—	—
Vortec 6.0L Hybrid <sup>3</sup>	7,300	—	—	—	—	—	—	—	—	—	1,509
	7,100	—	—	—	—	—	—	—	—	1,527	—
Vortec 6.2L V8 with MAX Trailering Pack	7,300	—	—	—	—	—	—	—	—	—	1,890
	7,200	—	—	—	—	—	—	1,835	—	—	—
	7,100	—	—	—	—	—	—	—	—	1,937	—
	7,000	—	—	—	—	1,908	—	—	—	—	—
Vortec 6.2L V8	7,000	—	—	—	—	—	—	1,671	—	—	1,626
	6,800	—	—	—	—	1,747	—	—	—	1,675	—

<sup>1</sup> Maximum payload capacity includes weight of driver, passengers, optional equipment and cargo. <sup>2</sup> Gross Vehicle Weight Rating (GVWR). When properly equipped; includes vehicle, passengers, cargo and equipment. <sup>3</sup> Available at participating dealers.

## TRAILERING BASICS

**NOTE:** Towing a trailer involves all major vehicle systems of your Chevy truck. Easy and safe trailering requires a properly equipped vehicle, additional trailering equipment and an appropriate trailer. It also requires loading both the vehicle and trailer properly, using safe driving techniques, meeting regional legal requirements, and following break-in and maintenance schedules. The vehicle owner is responsible for obtaining the proper equipment (hitch ball, hitch type of the proper size and capacity) required to safely tow both the trailer and the load that will be towed. For more information, consult your Owner's Manual or speak to a trailering expert at your Chevrolet dealership. These charts will assist in determining how to best equip your Chevy truck for trailering. To help you understand the charts, consider these trailering factors:

**RGAWR AND GVWR:** Addition of trailer hitch weight cannot cause vehicle weights to exceed Rear Gross Axle Weight Rating (RGAWR) or Gross Vehicle Weight Rating (GVWR). These ratings can be found on the certification label located on the driver door or doorframe.

**GCWR:** The Gross Combination Weight Rating is the total allowable weight of the completely loaded vehicle and trailer.

**TRAILER WEIGHT RATING:** This rating is determined by subtracting the tow vehicle's weight (curb weight) from the GCWR. Base vehicle (curb) weight is used, so additional passenger, equipment and cargo weight reduces this rating.

**NOTE:** The safety steps described here are by no means the only precautions to be taken when trailering. See the Owner's Manual for your Chevy Silverado for additional guidelines and trailering tips.

**TRAILERING CAUTION:** If you don't use the correct equipment and drive properly, you can lose control of your vehicle when you pull a trailer. If the trailer is too heavy, your vehicle brakes may be less effective. You and your passengers could be seriously injured. Pull a trailer only after you have taken the following steps:

**TRAILER BRAKES:** If your trailer weighs 2,000 lbs. loaded, then it must have its own adequate brakes. Be sure to read and follow the instructions for the trailer brake controller so that it is installed, adjusted and maintained properly.

**HITCHES:** It's important to have the correct hitch equipment. If you'll be towing a trailer, be sure to use a frame-mounted, weight-distributing hitch and sway control of the proper size. If you have to make any holes in the body of your vehicle to install a trailer hitch, be sure to seal the holes if you ever remove the hitch. If they're not sealed, dirt, water and deadly carbon monoxide from the exhaust can get into your vehicle.

**FIFTH-WHEEL TRAILERING:** Some Silverado models can be equipped with a fifth-wheel or gooseneck trailer hitch. Follow the manufacturer's directions for installation, but note that the hitch must be attached to the truck frame. Do not use the pickup bed for additional support. For proper kingpin tongue load distribution and control of the trailer, the hitch must be mounted so the kingpin load is placed ahead of the rear axle centerline. Fifth-wheel trailer kingpin loads are higher than conventional trailer tongue loads, so pay careful attention to the truck's payload capacity and rear axle weight ratings. Your Chevy dealer can help you calculate the maximum allowable payload and GVWR required for your fifth-wheel trailering application. The weight of any additional equipment and all passengers other than the driver must be subtracted from the payload weight to determine the maximum kingpin load available.



Once you leave the job in the rearview mirror, there's no limit to where your sense of adventure can lead. From climbing mountains to just kicking up some fun, the available **Z71 OFF-ROAD PACKAGE** has what it takes: skid plates to deflect rocks and other debris, 46mm high-pressure gas-charged shocks, and off-road jounce bumpers to help level the ride while you clamber over rutted two-tracks and broken terrain. When one rear wheel loses its grip, our **AUTOMATIC LOCKING REAR DIFFERENTIAL** redirects power to the wheel with traction. **AUTOTRAC**® even lets you shift into 4WD at any speed. And if you're going to have an off-road attitude, you might as well look like it. The available **Z71 APPEARANCE PACKAGE**<sup>1</sup> boasts a brawny look with a body-color grille and front bumper, Z71 graphics, bright doorsill plates, chrome recovery hooks, body-color outside mirrors and door handles, and foglamps. Factor in 18-inch aluminum wheels and **RANCHO**® **FRONT AND REAR SHOCKS** and you're ready for what the dirt throws at you.

<sup>1</sup> Requires available Z71 Off-Road Package.

# SILVERADO IS SOLID THROUGH AND THROUGH. BE TOUGH. THINK HARD CORE.



Silverado 1500 Crew Cab LTZ 4x4 shown in Silver Ice Metallic with available features and dealer-installed Chevy Accessories.

Deep inside, a Chevy truck has a good, strong backbone. Take the 2012 Silverado 1500 with a **HYDROFORMED FRONT FRAME**. Hydroforming—the injection of hydraulic fluids under extreme high pressure to reform metal into curved shapes—allows for fewer welds, providing clean attachment points and a better fit of body to frame. The front portion of the frame is **FULLY BOXED FOR EXTRA RIGIDITY** which absorbs road shocks and reduces vibrations from the cabin for a smooth, relaxing ride.

In the bed, our engineers preserved strength while conserving weight by fully boxing the rear portion of the frame all the way back to the spare tire cross member, where it becomes a C-channel. The result? A Crew Cab that can **HAUL UP TO 1,937 LBS. OF PAYLOAD<sup>1</sup>** with the available MAX Trailering Pack.

The core of Silverado, however, may well be its rigid frame. But it takes fine-tuning to create the kind of quiet, comfortable

ride Silverado provides—even while hauling or towing. **COIL-OVER-SHOCK FRONT SUSPENSION** and a wide front track provide great on-center feel, smooth out minor road irregularities, and supply excellent handling and stability on nearly all road surfaces. Durable, fade-resistant front and rear shocks help diminish road chatter and add a sense of comfort and control. Plus, advanced **HYDRAULIC BODY MOUNTS** on most Extended Cab and Crew Cab models improve ride quality by helping isolate and absorb bumps.

Just like the men and women who drive them, Silverado trucks are defined by a quiet strength. Thanks to available hydraulic engine mounts and wind tunnel-tested aerodynamics, Silverado keeps a calm interior. This is a truck that lets the work do the talking.

[chevy.com/silverado](http://chevy.com/silverado)  
TAKE A VIDEO TOUR

<sup>1</sup>Maximum payload capacity includes weight of driver, passengers, optional equipment and cargo.





Silverado 1500 Crew Cab  
LTZ interior shown in Ebony  
with available features.



#### LTZ INTERIOR AT A GLANCE

- Heated, leather-appointed front bucket seats with 10-way power adjusters
- Available power-adjustable pedals
- Remote vehicle starter system
- Choice of Ebony, Light Cashmere-Color or Light Titanium-Color interiors
- Dual-zone automatic climate controls

Silverado LT instrument panel shown in Light Titanium-Color/Dark Titanium-Color with available features.

# CONNECT

Silverado was built for your independent streak, but it recognizes that everyone has a social side. That's why we keep adding ways to keep you both protected and connected—so you won't be far from what matters.

## ONSTAR® DIRECTIONS & CONNECTIONS®<sup>1</sup>

Silverado takes you a long way from anywhere, which makes the reach of OnStar advanced technology that much more valuable. In a collision, vehicle sensors can automatically alert a trained OnStar Advisor, who can request that emergency help be sent to your exact location, even if you can't respond. And when work calls you to unfamiliar terrain, Turn-by-Turn Navigation gives you voice-guided directions to help you find your way. It's all standard on most models for six months.

## ONSTAR REMOTELINK™ MOBILE APP<sup>2</sup>

Working and playing outside can mean plenty of cold mornings. Download the OnStar REMOTELINK app to your smartphone and you can remotely start your engine,<sup>3</sup> warm the cabin and get your rig ready to roll. Lock or unlock your doors, or turn on your horn and lights to find your truck in a crowd.

## NAVTRAFFIC<sup>4</sup>

Need to make a delivery? Have to pick up equipment in a part of town notorious for gridlock? Use the available NavTraffic system to receive detailed traffic information when you need it most—while you're on the road.

## CHEVROLET WI-FI BY AUTONET MOBILE<sup>5</sup>

Work doesn't always end when you leave the office. Autonet Mobile Wi-Fi lets you order parts, apply for permits or look up building code information from your Silverado. Or on your getaway time, check fishing regulations, weather conditions or social networks through the Internet. The link is accessible for multiple devices simultaneously in the truck and up to 150 feet away.

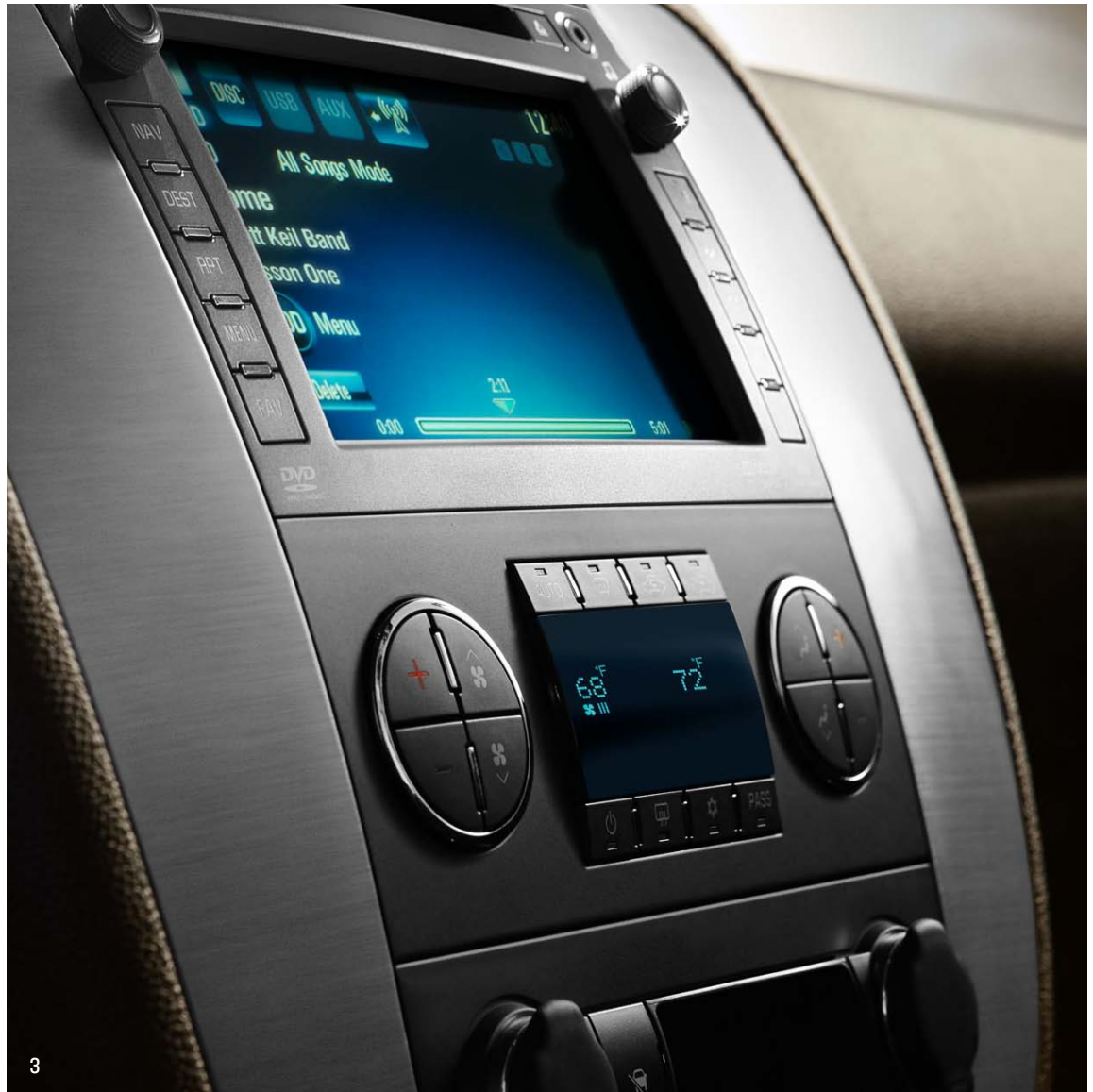
## BLUETOOTH®<sup>6</sup> AT YOUR COMMAND

Make, answer and end calls without taking your hands off the wheel or your eyes from the road. Just tap the steering-wheel controls and you're in touch. Bluetooth wireless technology for select phones is standard on Hybrid<sup>7</sup> and LTZ models.

1 Visit [onstar.com](http://onstar.com) for coverage map, details and system limitations. Services vary by model and conditions. OnStar acts as a link to existing emergency service providers. 2 Requires Android or iPhone platform and active OnStar subscription, which is standard for six months on most models. 3 Requires available remote vehicle starter system. 4 Requires available navigation radio. Requires a subscription sold separately by SiriusXM. Available only in select markets. For more information, see [siriusxm.com/navtraffic](http://siriusxm.com/navtraffic). 5 Monthly rates apply. Visit [autonetmobile.com](http://autonetmobile.com) for details and coverage map. 6 Go to [gm.com/bluetooth](http://gm.com/bluetooth) to find out which phones are compatible with the vehicle. 7 Available at participating dealers.



Information Provided by:  
**DEALER**  
PROCESS



# NAVIGATE

Whether you're making deliveries in an unfamiliar town or scouting a new fishing hole, Silverado offers a new touch-screen navigation system that displays maps and information to help you find your way. Available on select models, this system plays **SIRIUSXM SATELLITE RADIO**<sup>1</sup> and provides **NAVTRAFFIC**<sup>2</sup> updates, when equipped. Or you can listen to music from your CDs or MP3 player. To further customize your driving tunes, plug your iPod<sup>®3</sup> or even a music-loaded flash drive directly into an available USB port.<sup>4</sup> A hard drive with up to 30 GB available enables **PAUSE AND PLAY**, which lets you pause a live radio broadcast and record up to 20 minutes of it for playback later. The radio's color screen also integrates with the **AVAILABLE REAR VISION CAMERA DISPLAY** to give you a much clearer vision of trailer

hookups. Backing up or going forward, it's all part of the way Silverado changes the way you see the world.

1. Available **NAVTRAFFIC**<sup>2</sup> includes a Map View feature with detailed traffic updates so you can make last-minute course corrections and choose the route that's best for you.
2. The available **REAR VISION CAMERA** features guidelines to help direct you into spaces.
3. The **MEDIA SCREEN** shows the different available media sources.

<sup>1</sup> Requires a subscription sold separately by SiriusXM after three-month trial. Available only in the 48 contiguous United States and Washington, D.C. Visit [siriusxm.com](http://siriusxm.com) for more information. <sup>2</sup> Requires available navigation radio. Requires a subscription sold separately by SiriusXM after trial. Available only in select markets. For more information, see [siriusxm.com/navtraffic](http://siriusxm.com/navtraffic). <sup>3</sup> iPod is a mobile digital device. iPod is a registered trademark of Apple Inc., registered in the U.S. and other countries. <sup>4</sup> Not compatible with all devices.



# HYBRID POWER— WITH 20 MPG CITY/ 23 HIGHWAY

Silverado Hybrid 2HY 4x4  
shown in Silver Ice Metallic.

When you develop the **SILVERADO HYBRID<sup>1</sup>—AMERICA'S FIRST TWO-MODE HYBRID PICKUP**—you want to put up the numbers. Silverado Hybrid offers an EPA-estimated 20 MPG city/23 highway—that's **CITY FUEL ECONOMY UNSURPASSED BY THE 6-CYLINDER HONDA ACCORD<sup>2</sup>**. But what really counts is how Silverado Hybrid performs under demanding conditions. With **332 HORSEPOWER, 367 LB.-FT. OF TORQUE**, up to 6,100 lbs. of towing power (2WD)<sup>3</sup> and a payload capacity of up to 1,527 lbs. (2WD).<sup>4</sup>

It should also come as no surprise that our available 5.3L engine offers V8 fuel efficiency that's unsurpassed in its class—an EPA-estimated 15 MPG city and 21 highway when running on gasoline. Silverado XFE, with an **ALUMINUM-BLOCK VORTEC 5.3L V8** and soft tonneau cover, offers an impressive EPA-estimated 15 MPG city/22 highway when running on gas—that's better V8 fuel economy than any competitor.<sup>5</sup>

If you're a fan of **E85<sup>6</sup>, A BLEND OF 85% ETHANOL AND 15% GASOLINE**, you'll be glad to know that the Vortec 4.8L, 5.3L and 6.2L V8 engines can operate on either regular unleaded gasoline or any combination of both. You should also know that we're already hard at work building the trucks that will meet the needs of tomorrow.

<sup>1</sup> Available at participating dealers. <sup>2</sup> EPA-estimated MPG city; Silverado Hybrid 20, Honda Accord 20. <sup>3</sup> Maximum trailer weight ratings are calculated assuming a base vehicle, except for any option(s) necessary to achieve the rating, plus driver. The weight of other optional equipment, passengers and cargo will reduce the maximum trailer weight your vehicle can tow. See your Chevy dealer for additional details. <sup>4</sup> Maximum payload capacity includes weight of driver, optional equipment and cargo. <sup>5</sup> Based on GM Large Pickup segment. <sup>6</sup> Go to [chevy.com/biofuels](http://chevy.com/biofuels) to see if there is an E85 fuel station near you. When running on E85, Silverado 1500 with 4.8L V8 engine offers an EPA-estimated 10 MPG city/14 highway; Silverado 1500 with 5.3L V8 engine offers an EPA-estimated 11 MPG city/16 highway; and Silverado 1500 with 6.2L V8 engine offers an EPA-estimated 9 MPG city/13 highway.



## SILVERADO HYBRID DRIVES VERIZON. ITS FLEET OF 787 FUEL-CONSCIOUS TRUCKS IS PROOF THAT EFFICIENCY IS GOOD FOR BUSINESS.

FUEL ECONOMY	2WD EPA-ESTIMATED MPG CITY/HIGHWAY	4x4 EPA-ESTIMATED MPG CITY/HIGHWAY
2012 Chevrolet Silverado Hybrid 6.0L V8	20/23	20/23
2012 Chevrolet Silverado 5.3L V8 XFE	15/22	—
2012 Chevrolet Silverado 5.3L V8	15/21	15/21
2012 Ford 150 EcoBoost V6	16/22	15/21
2012 Ford F-150 5.0L V8	15/21	14/19
2012 Toyota Tundra 4.6L V8	15/20	14/19
2012 Ram 5.7L V8	14/20	13/19



# THE JOB DOESN'T CARE WHO DOES IT



Silverado 1500 Extended Cab  
All-Star Edition 4x4  
shown in Blue Granite Metallic  
with available features.

Silverado Extended Cab rear doors  
swing open a full **170 DEGREES**—the  
widest of any full-size pickup.



Weekdays are hard enough. Silverado was designed to make your work life simpler. It shows up on the job with a rugged **STAMPED PICKUP BOX** and a low load-in height. A wide rear step bumper and **TWO-TIER LOADING CAPABILITY** make loading easy. Four cargo tie-downs help secure your payload, while the available **EZ LIFT LOCKING TAILGATE** can easily be removed to accommodate awkward loads. Small things? Perhaps. But it is more proof that Chevy understands the way you work.

Inside, Silverado is designed for the job too with **170-DEGREE WIDE-OPENING DOORS** on Extended Cab and a **LOW STEP-IN HEIGHT**. Handles and knobs are large and easy to use, even with gloved hands, and available **LOCKING UNDERSEAT STORAGE** helps secure your valuables on the job site. Even the cup holders are designed to handle that industrial-sized cup of joe that gets you going on a Monday morning.



Silverado 1500 Extended Cab WT  
shown in Summit White  
with available dealer-installed  
Chevy Accessories.



# BUILD OUT YOUR BED

Your Chevy dealer can help you tailor Silverado to your exact specifications. From **BEDLINERS** to **TOOLBOXES** to **ASSIST STEPS**, a full range of available, dealer-installed Chevy Accessories makes it easy to get the job done. For example, the **CARGO MANAGEMENT SYSTEM** utilizes sliding hooks embedded in C-channel tracks that run along both sides and the front of the pickup box. Each anchor in this

integrated, configurable system is **RATED UP TO 500 LBS.<sup>1</sup>** and can be fitted with Chevy Accessories.

Most **CHEVY ACCESSORIES** are covered by the GM 3-year/36,000-mile (whichever comes first) New Vehicle Limited Warranty when ordered with your new vehicle. See dealer for details.



Information Provided by:  
**DEALER**  
STEP PROCESS

<sup>1</sup> Cargo and load capacity limited by weight and distribution.

# COLORS



Black



Black Granite Metallic<sup>1</sup>



Imperial Blue Metallic<sup>1</sup>



Blue Granite Metallic



Victory Red



Mocha Steel Metallic<sup>1</sup>



Graystone Metallic<sup>1</sup>



Silver Ice Metallic<sup>1</sup>



White Diamond Tricoat<sup>2</sup>

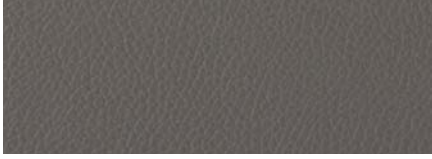


Summit White

<sup>1</sup> Interim availability. <sup>2</sup> Requires available White Diamond Edition. <sup>3</sup> Standard on WT. <sup>4</sup> Standard on LS, LT and XFE; available on WT. <sup>5</sup> Standard on LT, XFE and 1HY. <sup>6</sup> Standard on LTZ and 2HY; available on LT and XFE. <sup>7</sup> Available on LTZ.



# FABRICS



Dark Titanium-Color Vinyl<sup>3</sup>



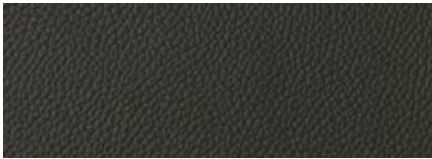
Ebony Cloth<sup>4</sup>



Light Titanium-Color Cloth<sup>5</sup>



Light Cashmere-Color Cloth<sup>5</sup>



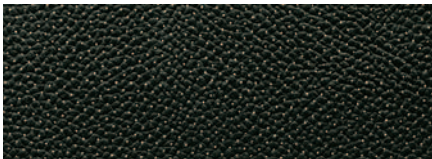
Ebony Leather Appointments<sup>6</sup>



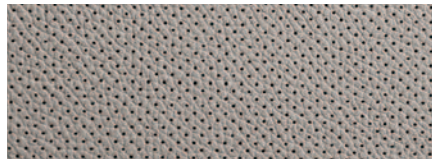
Light Titanium-Color  
Leather Appointments<sup>6</sup>



Light Cashmere-Color  
Leather Appointments<sup>6</sup>



Ebony Perforated-Leather Appointments<sup>7</sup>



Light Titanium-Color Perforated-  
Leather Appointments<sup>7</sup>



Light Cashmere-Color Perforated-  
Leather Appointments<sup>7</sup>

# WHEELS



17" Steel Wheel

17" Chrome-Styled  
Steel Wheel

17" Aluminum  
Wheel

Information Provided by  
**IDEAL**  
STAFF

18" Aluminum  
Wheel

18" Chrome-Clad  
Aluminum Wheel

20" Chrome-Clad  
Aluminum Wheel



# REGULAR CAB

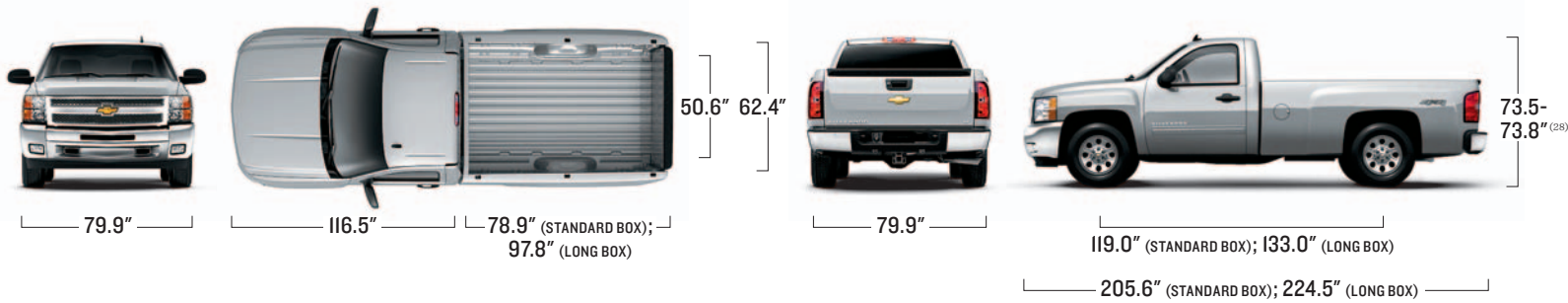
■ STANDARD □ AVAILABLE – NOT AVAILABLE

	WT	LT
<b>EXTERIOR</b>		
Bumper: Front, black	■	–
Front, chrome; with chrome end caps	□ <sup>1</sup>	■
Rear, chrome; step-style with pad	■	■
<b>Chrome Essentials Package:</b> Polished exhaust tip; chrome recovery hooks, door handles and mirror caps; 18" chrome-clad aluminum wheels; and chrome tubular assist step	–	□ <sup>2</sup>
Door handles: Black	■	■
Grille: Black surround	■	–
Chrome surround with chrome mesh	□ <sup>1</sup>	■
<b>LS Package:</b> 17" chrome styled-steel wheels, chrome grille surround, grille mesh, front bumper and end caps	□	–
Mirrors: Black, folding	■	–
Black, folding, power, heated	□ <sup>3</sup>	■
Black, trailering, high-visibility, vertical, manual-folding and extendable, with lower convex spotter glass	□	–
Black, trailering, vertical, power, heated, manual-folding and extendable, with turn-signal indicators and lower convex spotter glass	–	□ <sup>4</sup>
Recovery hooks: Two front (4x4)	■	■
<b>ENGINES/CHASSIS</b>		
Cooler: Engine oil, heavy-duty, external	□ <sup>5</sup>	□ <sup>5</sup>
Cooler: Transmission fluid, auxiliary, heavy-duty, external	□ <sup>6</sup>	□ <sup>7</sup>
Differential: Automatic locking rear	□	□
Engine block heater	□	□
<b>Skid Plate Package:</b> <sup>8</sup> Frame-mounted shield protecting front underbody, oil pan, differential case and transfer case (4x4)	□	□
<b>Snow Plow Prep Package:</b> <sup>9</sup> 10-amp power for backup and roof emergency light, 160-amp alternator, high-flow front bumper, forward lamp wiring harness, provision for cab roof-mounted lamp beacon, instrument panel jumper wiring harness for electric trailer brake controller, high-capacity air cleaner, auxiliary external transmission oil cooler and Skid Plate Package (4x4)	□	□
Steering: Power, rack-and-pinion	■	■
Suspension: Front independent, coil-over-shock; rear two-stage, multi-leaf springs, semi-elliptical	■	■
Z83 Solid Smooth Ride	■	–
Z85 Handling/Trailering	□ <sup>10</sup>	■
Z71 Off-Road	–	□ <sup>11</sup>
<b>Trailering Package:</b> Trailer hitch platform, 7-wire harness mated to 7-way sealed connector, trailer brake control jumper harness under dash, external transmission oil cooler and automatic locking rear differential <sup>12</sup>	□ <sup>13</sup>	□
Transfer case (4x4): Floor-mounted, manual shift-on-the-fly	■	–
Transfer case (4x4): Autotrac, active	–	■
<b>Z71 Off-Road Package:</b> Skid Plate Package; off-road jounce bumpers, shock absorbers and stabilizer bars; high-capacity air cleaner; recovery hooks; and Z71 decals	–	□ <sup>11</sup>

	WT	LT
<b>SAFETY &amp; SECURITY</b>		
Air bags: <sup>14</sup> Driver and right-front passenger with Passenger Sensing System	■	■
Head-curtain with rollover sensor	■	■
Seat-mounted for thorax and pelvic protection	■	■
Brake controller: Trailer, ABS-integrated <sup>15</sup>	□	□
Brakes: Four-wheel antilock (ABS)	■	■
OnStar <sup>16</sup> Directions & Connections	□ <sup>17</sup>	–
OnStar <sup>16</sup> Directions & Connections for six months	–	■
StabiliTrak Electronic Stability Control System with Trailer Sway Control and Hill Start Assist	■	■
<b>INTERIOR</b>		
Bluetooth <sup>®</sup> wireless technology <sup>18</sup> for select phones	□ <sup>19</sup>	□ <sup>20</sup>
Climate control: Single-zone, manual	■	■
Defogger: Rear-window	□	□
Door locks: Power; with Remote Keyless Entry	□ <sup>21</sup>	■
Driver Information Center controls	□ <sup>22</sup>	□ <sup>20</sup>
Driver Information Center display	■	■
Glove boxes: Dual	■	■
<b>Interior Plus Package:</b> Six-way power-adjustable driver seat, USB port, <sup>23</sup> steering wheel-mounted audio controls, Bluetooth wireless technology <sup>18</sup> for select phones, EZ Lift locking tailgate and foglamps	–	□
Steering column: Tilt-wheel, adjustable	■	■
Steering wheel-mounted audio and cruise controls	□ <sup>22</sup>	□ <sup>20</sup>
<b>Windows, Locks and Mirrors Power Package:</b> Power driver and passenger side windows with uplevel door panels, outside heated power-adjustable manual folding mirrors and power door locks (Remote Keyless Entry sold separately)	□	–
Windows: Power, with driver's Express-Down feature	□ <sup>3</sup>	■
<b>SEATING</b>		
Vinyl 40/20/40 split-bench front seat with recliners and fold-down center armrest with storage	■	–
Cloth 40/20/40 split-bench front seat with recliners, manual lumbar support and fold-down center armrest with storage	□	–
Premium Cloth 40/20/40 split-bench front seat with recliners, manual lumbar support, fold-down center armrest with storage and lockable underseat storage	–	■
<b>AUDIO SYSTEMS</b>		
AM/FM stereo	■	–
AM/FM stereo with CD/MP3 player	□	■
AM/FM stereo with CD/MP3 player and USB port <sup>23</sup>	–	□ <sup>20</sup>
SiriusXM Satellite Radio <sup>24</sup>	□ <sup>19</sup>	–
SiriusXM Satellite Radio <sup>25</sup> with three trial months	–	■
<b>WHEELS</b>		
17" steel	■	–
17" chrome-styled steel	□ <sup>1</sup>	■
17" aluminum	–	□ <sup>26</sup>
18" chrome-clad aluminum	–	□ <sup>27</sup>
18" aluminum	–	□ <sup>26</sup>

<sup>1</sup> Requires available LS Package. <sup>2</sup> Not available with Z71 Off-Road Package or heated trailering mirrors. <sup>3</sup> Requires available Windows, Locks and Mirrors Power Package. <sup>4</sup> Requires available auto-dimming inside rearview mirror. <sup>5</sup> Requires available Heavy-Duty Cooling Package. <sup>6</sup> Requires available Trailering Package, Snow Plow Prep Package or Heavy-Duty Cooling Package. <sup>7</sup> Requires available Trailering Package or Snow Plow Prep Package. <sup>8</sup> 2WD models require available Z71 Off-Road Package. <sup>9</sup> Not available with Vortec 4.3L V6 engine. <sup>10</sup> Requires available Trailering Package. <sup>11</sup> Requires available Trailering Package and Vortec 5.3L V8 engine. <sup>12</sup> Automatic locking rear differential not included on fleet orders. <sup>13</sup> Not available with Vortec 4.3L V6 engine or Z83 Solid Smooth Ride suspension. <sup>14</sup> Always use safety belts and child restraints. Children are safer when properly secured in a rear seat in the appropriate child restraint. See the Owner's Manual for more info. <sup>15</sup> Requires available Trailering Package. Not available with Vortec 4.3L V6 engine. <sup>16</sup> Visit onstar.com for coverage map, details and system limitations. Services vary by model and conditions. <sup>17</sup> Requires available power door locks and Remote Keyless Entry. <sup>18</sup> Go to gm.com/bluetooth to find out which phones are compatible with the vehicle. <sup>19</sup> Requires available OnStar and AM/FM stereo with CD/MP3 player. <sup>20</sup> Requires available Interior Plus Package. <sup>21</sup> Remote Keyless Entry sold separately when Windows, Locks and Mirrors Power Package is ordered. <sup>22</sup> Requires available Bluetooth wireless technology. <sup>23</sup> Not compatible with all devices. <sup>24</sup> Requires a subscription sold separately by SiriusXM. Available only in the 48 contiguous United States and Washington, D.C. Visit siriusxm.com for more information. <sup>25</sup> Requires a subscription sold separately by SiriusXM after trial. Available only in the 48 contiguous United States and Washington, D.C. Visit siriusxm.com for more information. <sup>26</sup> Requires available Z71 Off-Road Package. <sup>27</sup> Requires available Chrome Essentials Package. <sup>28</sup> Depending on model and tire size selected.

# REGULAR CAB



PICKUP MODEL	SERIES	DRIVE	TRIM LEVELS	STANDARD ENGINE	HP @ RPM	TORQUE @ RPM	STANDARD TRANSMISSION	OPTIONAL ENGINES
REGULAR CAB STANDARD BOX	1500 (1/2-ton)	2WD/4x4	WT	Vortec 4.3L V6	195 @ 4600	260 @ 2800	Hydra-Matic® 4-speed automatic overdrive	Vortec 4.8L V8, Vortec 5.3L V8
		2WD/4x4	LT	Vortec 4.8L V8	302 @ 5600	305 @ 4600	Hydra-Matic 4-speed automatic overdrive	Vortec 5.3L V8
REGULAR CAB LONG BOX	1500 (1/2-ton)	2WD/4x4	WT	Vortec 4.3L V6	195 @ 4600	260 @ 2800	Hydra-Matic 4-speed automatic overdrive	Vortec 4.8L V8, Vortec 5.3L V8
		2WD/4x4	LT	Vortec 4.8L V8	302 @ 5600	305 @ 4600	Hydra-Matic 4-speed automatic overdrive	Vortec 5.3L V8

# EXTENDED CAB

■ STANDARD □ AVAILABLE – NOT AVAILABLE

	WT	LS	LT	LTZ
<b>EXTERIOR</b>				
Bumper: Front, black	■	–	–	–
Front, chrome; with chrome end caps	□ <sup>1</sup>	■	■	–
Front, body-color	–	–	□ <sup>2</sup>	■
Rear, chrome; step-style with pad	■	■	■	■
<b>Chrome Essentials Package:</b> Polished exhaust tip; chrome recovery hooks, door handles and mirror caps; 18" chrome-clad aluminum wheels; and chrome tubular assist steps (Standard Box only)	–	–	□ <sup>3</sup>	□ <sup>3</sup>
<b>Custom Sport Truck Package:</b> Vortec 5.3L V8, 20" chrome-clad aluminum wheels, chrome mirror caps and door handles, dual-zone automatic climate controls, Bluetooth® wireless technology <sup>4</sup> for select phones, steering wheel-mounted audio controls, AM/FM stereo with CD/MP3 player and USB port <sup>5</sup> ; 6-way power-adjustable driver seat, foglamps, Trailing Package, EZ Lift locking tailgate, and chrome-accented bodyside moldings	–	–	□	–
Door handles: Black	■	■	■	–
Body-color	–	–	□ <sup>2</sup>	■
Foglamps: Halogen	–	–	□ <sup>6</sup>	■
Grille: Black surround	■	–	–	–
Chrome surround with chrome mesh	□ <sup>1</sup>	■	■	–
Body-color with chrome mesh	–	–	□ <sup>2</sup>	■
<b>LS Package:</b> 17" chrome styled-steel wheels, chrome grille surround, grille mesh, front bumper and end caps	□	–	–	–
<b>LTZ Plus Package:</b> EZ Lift locking tailgate, Universal Home Remote transmitter, rear wheelhousing liner, Rear Parking Assist and power-adjustable pedals	–	–	–	□
Mirrors: Black, folding	■	–	–	–
Black, folding, power, heated	□ <sup>7</sup>	■	■	–
Body-color, power, heated, with turn-signal indicators in glass, driver-side auto-dimming feature and power-folding feature	–	–	□ <sup>2</sup>	■
Black, trailering, high-visibility, vertical, manual-folding and extendable, with lower convex spotter glass	□	–	–	–
Black, trailering, vertical, power, heated, manual-folding and extendable, with turn-signal indicators and lower convex spotter glass	–	–	□ <sup>8</sup>	□
Rear Parking Assist	–	–	□ <sup>9</sup>	□ <sup>10</sup>
Recovery hooks: Two front (4x4)	■	■	■	■
<b>ENGINES/CHASSIS</b>				
<b>All-Star Edition:</b> Vortec 5.3L V8, automatic locking rear differential, Trailing Package, 17" aluminum wheels, dual-zone automatic climate controls, Bluetooth wireless technology <sup>4</sup> for select phones, CD/MP3 player and USB port <sup>5</sup> ; steering wheel-mounted audio controls, six-way power-adjustable driver seat, foglamps and EZ Lift locking tailgate	–	–	□	–
Cooler: Engine oil, heavy-duty, external	□ <sup>11</sup>	–	□ <sup>11</sup>	■
Cooler: Transmission fluid, auxiliary, heavy-duty, external	□ <sup>12</sup>	□ <sup>13</sup>	□ <sup>14</sup>	■
Differential: Automatic locking rear	□	□	□	■
Engine block heater	□	□	□	□
<b>MAX Trailing Pack:</b> <sup>15</sup> Vortec 6.2L V8, automatic locking rear differential, 9.5" rear axle, front/rear disc brakes, 3.73 rear axle ratio, 17" aluminum wheels, foglamps, Z85 Handling/Trailing suspension and Trailing Package (Standard Box only)	–	–	□	□

	WT	LS	LT	LTZ
<b>ENGINES/CHASSIS (CONTINUED)</b>				
<b>Skid Plate Package:</b> <sup>16</sup> Frame-mounted shield protecting front underbody, oil pan, differential case and transfer case (4x4)	□	□	□	□
Steering: Power, rack-and-pinion	■	■	■	■
Suspensions: Front independent, coil-over-shock; rear two-stage, multi-leaf springs, semi-elliptical	■	■	■	■
Z83 Solid Smooth Ride	–	–	–	–
Z85 Handling/Trailing	□ <sup>13</sup>	■	■	■
Z60 High-Performance <sup>17</sup>	–	–	□	□
Z71 Off-Road	–	–	□ <sup>18</sup>	□
<b>Trailing Package:</b> Trailer hitch platform, 7-wire harness mated to 7-way sealed connector, trailer brake control jumper harness under dash, external transmission oil cooler and automatic locking rear differential <sup>19</sup>	□ <sup>20</sup>	□	□	■
Transfer case (4x4): Floor-mounted, manual shift-on-the-fly	■	■	–	–
Transfer case (4x4): Autotrac, active	–	–	■	■
<b>Z71 Appearance Package:</b> 18" aluminum wheels; foglamps; body-color outside mirrors and door handles; unique Z71 decals, instrument cluster graphics, body-color front bumper and lower fascia, body-color grille with chrome insert and sill plates; Rancho shocks; and chrome recovery hooks (Standard Box only)	–	–	□ <sup>21</sup>	□ <sup>21</sup>
<b>Z71 Off-Road Package:</b> Skid Plate Package; off-road jounce bumpers, shock absorbers and stabilizer bars; high-capacity air cleaner; and Z71 decals	–	–	□ <sup>18</sup>	□
<b>SAFETY &amp; SECURITY</b>				
Air bags: <sup>22</sup> Driver and right-front passenger with Passenger Sensing System; front and rear head-curtain with rollover sensor; front seat-mounted for thorax and pelvic protection	■	■	■	■
Brake controller: Trailer, ABS-integrated <sup>13</sup>	□	□	□	□
Brakes: Four-wheel antilock (ABS)	■	■	■	■
OnStar <sup>23</sup> with Directions & Connections	□ <sup>24</sup>	–	–	–
OnStar <sup>23</sup> with Directions & Connections for six months	–	■	■	■
StabiliTrak Electronic Stability Control System with Trailer Sway Control and Hill Start Assist	■	■	■	■
<b>INTERIOR</b>				
Bluetooth wireless technology <sup>4</sup> for select phones	□ <sup>25</sup>	□	□ <sup>26</sup>	■
Climate control: Single-zone, manual	■	■	■	–
Dual-zone, automatic	–	–	□ <sup>26</sup>	–
<b>Convenience Package:</b> Power-adjustable pedals, Rear Parking Assist, rear-window defogger, Universal Home Remote and remote vehicle starter system	–	–	□	–
Defogger: Rear-window <sup>27</sup>	□	□	□	■
Door locks: Power; with Remote Keyless Entry	□ <sup>28</sup>	■	■	■
Glove boxes: Dual	■	■	■	–
<b>Interior Plus Package:</b> Six-way power-adjustable driver seat, USB port <sup>5</sup> ; steering wheel-mounted audio controls, Bluetooth wireless technology <sup>4</sup> for select phones, dual-zone automatic temperature controls, EZ Lift locking tailgate and foglamps	–	–	□ <sup>29</sup>	–
Mirror: Inside rearview, auto-dimming	–	–	□ <sup>30</sup>	■

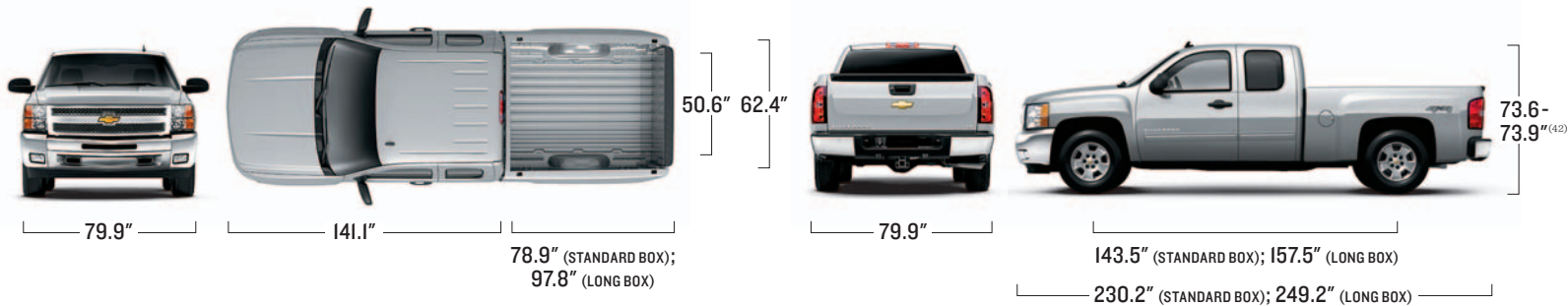
<sup>1</sup> Requires available LS Package. <sup>2</sup> Requires available Z71 Appearance Package. <sup>3</sup> Not available with Z71 Off-Road Package, MAX Trailing Pack or heated trailering mirrors. <sup>4</sup> Go to gm.com/bluetooth to find out which phones are compatible with the vehicle. <sup>5</sup> Not compatible with all devices. <sup>6</sup> Requires available Custom Sport Truck Package, Z71 Appearance Package, All-Star Edition, Interior Plus Package or MAX Trailing Pack. <sup>7</sup> Requires available Windows, Locks and Mirrors Power Package. <sup>8</sup> Requires available auto-dimming inside rearview mirror or auto-dimming inside rearview mirror with rear vision camera display. <sup>9</sup> Requires available Convenience Package. <sup>10</sup> Requires available LTZ Plus Package. <sup>11</sup> Requires available Vortec 6.2L V8 engine or Heavy Duty Cooling Package. <sup>12</sup> Requires available Trailing Package, Snow Plow Prep Package or Heavy Duty Cooling Package. <sup>13</sup> Requires available Trailing Package. <sup>14</sup> Requires available Trailing Package, Snow Plow Prep Package or Vortec 6.2L V8 engine. <sup>15</sup> Not available with Z71 Off-Road Package. <sup>16</sup> 2WD models require available Z71 Off-Road Suspension Package. <sup>17</sup> Requires available 20" chrome-clad aluminum wheels. <sup>18</sup> Not available with Vortec 4.8L V8 engine. <sup>19</sup> Automatic Locking Rear Differential not included on Fleet orders. <sup>20</sup> Not available with Vortec 4.3L V6 engine or Solid Smooth Ride suspension. <sup>21</sup> Requires available Z71 Off-Road Package. <sup>22</sup> Always use safety belts and child restraints. Children are safer when properly secured in a rear seat in the appropriate child restraint. See the Owner's Manual for more info. <sup>23</sup> Visit onstar.com for coverage map, details and system limitations. Services vary by model and conditions. <sup>24</sup> Requires available power door locks and Remote Keyless Entry. <sup>25</sup> Requires available OnStar and AM/FM stereo with CD/MP3 player. <sup>26</sup> Requires available All-Star Edition, Custom Sport Truck Package or Interior Plus Package. <sup>27</sup> Not available with power-sliding rear window. <sup>28</sup> Remote Keyless Entry sold separately when Windows, Locks and Mirrors Power Package is ordered. <sup>29</sup> Not available with All-Star Edition or Custom Sport Truck Package. <sup>30</sup> Requires available heated trailering mirrors. <sup>31</sup> Requires available Convenience Package and Interior Plus Package, Custom Sport Truck Package or All-Star Edition. <sup>32</sup> Not available with rear-window defogger. <sup>33</sup> Requires available Front Bucket Seats and Interior Plus Package. <sup>34</sup> Requires a subscription sold separately by SiriusXM. Available only in the 48 contiguous United States and Washington, D.C. Visit siriusxm.com for more information. <sup>35</sup> Requires a subscription sold separately by SiriusXM after trial. Available only in the 48 contiguous United States and Washington, D.C. Visit siriusxm.com for more information. <sup>36</sup> Requires a subscription sold separately by SiriusXM. Available only in select markets. For more information, see siriusxm.com/navtraffic. <sup>37</sup> Requires available navigation system. <sup>38</sup> Requires available All-Star Edition, MAX Trailing Pack or Z71 Off-Road Package. <sup>39</sup> Requires available MAX Trailing Pack. <sup>40</sup> Requires available Chrome Essentials Package. <sup>41</sup> Not available with Snow Plow Prep Package, Z71 Off-Road Package or Long Box Models. <sup>42</sup> Depending on model and tire size selected.

# EXTENDED CAB

■ STANDARD □ AVAILABLE – NOT AVAILABLE

	WT	LS	LT	LTZ
<b>INTERIOR (CONTINUED)</b>				
Rear vision camera system (with display in rearview mirror or nav screen)	–	–	□ <sup>31</sup>	□ <sup>10</sup>
Remote vehicle starter system	–	–	□ <sup>9</sup>	■
Sunroof: Power-sliding, with Express-Open feature	–	–	–	□
<b>Windows, Locks and Mirrors Power Package:</b> Power driver and passenger side windows with uplevel door panels, outside heated power-adjustable manual folding mirrors and power door locks (Remote Keyless Entry sold separately)	□	–	–	–
Windows: Power, and rear full drop, with driver Express-Down feature	□ <sup>7</sup>	■	■	■
Windows: Power-sliding, rear <sup>32</sup>	–	–	□	□
<b>SEATING</b>				
Vinyl 40/20/40 split-bench front seat with recliners and fold-down center armrest with storage	■	–	–	–
Cloth 40/20/40 split-bench front seat with recliners, manual lumbar support and fold-down center armrest with storage	□	■	–	–
Premium Cloth 40/20/40 split-bench front seat with recliners, manual lumbar support, fold-down center armrest with storage and lockable underseat storage	–	–	■	–
Also available with Custom Leather-appointed trim	–	–	□	–
Premium Cloth, reclining, six-way power-adjustable front bucket seats with manual lumbar support	–	–	□	–
Also available with Custom Leather-appointed trim	–	–	□	–
Custom Leather-appointed, reclining, heated, 10-way power-adjustable front bucket seats with memory and power lumbar support	–	–	–	■

	WT	LS	LT	LTZ
<b>SEATING (CONTINUED)</b>				
Custom Leather-appointed with perforated inserts, reclining, heated and cooled, 10-way power-adjustable front bucket seats with memory and power lumbar support	–	–	–	□
Rear seat: flip-up, full-width bench	■	■	–	–
Flip-up, 60/40 split-bench	–	–	■	■
<b>AUDIO SYSTEMS</b>				
AM/FM stereo	■	–	–	–
AM/FM stereo with CD/MP3 player	□	■	■	–
AM/FM stereo with CD/MP3 player and USB port <sup>5</sup>	–	–	□ <sup>26</sup>	■
AM/FM stereo with in-dash six-disc CD/MP3 changer and USB port <sup>4</sup>	–	–	–	□
Bose® sound system	–	–	□ <sup>33</sup>	■
SiriusXM Satellite Radio <sup>34</sup>	□ <sup>25</sup>	–	–	–
SiriusXM Satellite Radio <sup>35</sup> with three trial months	–	■	■	■
NavTraffic <sup>36</sup>	–	–	–	□ <sup>37</sup>
Touch-screen navigation radio	–	–	–	□
<b>WHEELS</b>				
17" steel	■	–	–	–
17" chrome styled-steel	□ <sup>1</sup>	■	■	–
17" aluminum	–	–	□ <sup>38</sup>	□ <sup>39</sup>
18" chrome-clad aluminum	–	–	□ <sup>40</sup>	■
18" aluminum	–	–	□ <sup>21</sup>	□ <sup>21</sup>
20" chrome-clad aluminum	–	–	□ <sup>41</sup>	□ <sup>41</sup>



PICKUP MODEL	SERIES	DRIVE	TRIM LEVELS	STANDARD ENGINE	HP @ RPM	TORQUE @ RPM	STANDARD TRANSMISSION	OPTIONAL ENGINES
<b>EXTENDED CAB STANDARD BOX</b>	1500 (1/2-ton)	2WD	WT	Vortec 4.3L V6	195 @ 4600	260 @ 2800	Hydra-Matic 4-speed automatic overdrive	Vortec 4.8L V8, Vortec 5.3L V8
		4x4	WT	Vortec 4.8L V8	302 @ 5600	305 @ 4600	Hydra-Matic 4-speed automatic overdrive	Vortec 5.3L V8
	2WD/4x4	LS, LT	Vortec 4.8L V8	302 @ 5600	305 @ 4600	Hydra-Matic 4-speed automatic overdrive	Vortec 5.3L V8 (LT) Vortec 6.2L V8 (LT)	
		LTZ	Vortec 5.3L V8	315 @ 5200	335 @ 4000	Hydra-Matic 6-speed automatic overdrive	Vortec 6.2L V8	
		LT, LTZ	Vortec 6.2L V8	403 @ 5700	417 @ 4300	Hydra-Matic 6-speed automatic overdrive	–	
<b>MAX Trailering Pack</b>	1500 (1/2-ton)	2WD/4x4	WT, LT, LTZ	Vortec 5.3L V8	315 @ 5200	335 @ 4000	Hydra-Matic 4-speed automatic overdrive	–



# CREW CAB

■ STANDARD □ AVAILABLE – NOT AVAILABLE

	WT	LS	LT	XFE	LTZ	HYBRID <sup>1</sup>	
						IHY	2HY
<b>EXTERIOR</b>							
Bumper: Front, black	■	–	–	–	–	–	–
Front, chrome; with chrome end caps	–	■	■	■	–	■	■
Front, body-color	–	–	□ <sup>2</sup>	–	■	–	–
Rear, chrome; step-style with pad	■	■	■	■	■	■	■
<b>Chrome Essentials Package:</b>							
Polished exhaust tip; chrome recovery hooks, door handles and mirror caps; 18" chrome-clad aluminum wheels; and chrome tubular assist steps	–	–	□ <sup>3</sup>	–	□ <sup>3</sup>	–	–
Door handles: Black	■	■	■	■	–	■	■
Body-color	–	–	□ <sup>2</sup>	–	■	–	–
Foglamps: Halogen	–	–	□ <sup>4</sup>	□ <sup>5</sup>	■	–	■
Grille: Black surround	■	–	–	–	–	–	–
Chrome surround with chrome mesh	–	■	■	■	–	■	■
Body-color with chrome mesh	–	–	□ <sup>2</sup>	–	■	–	–
<b>LTZ Plus Package:</b> EZ Lift locking tailgate, Universal Home Remote transmitter, rear wheelhousing liner, Rear Parking Assist and power-adjustable pedals							
Mirrors: Black, folding	■	–	–	–	–	–	–
Black, folding, power, heated	□ <sup>6</sup>	■	■	■	–	■	–
Body-color, power, heated, with turn-signal indicators in glass, driver-side auto-dimming feature and power-folding feature	–	–	□ <sup>2</sup>	–	■	–	■
Black, trailering, high-visibility, vertical, manual-folding and extendable, with lower convex spotter glass	□	–	–	–	–	–	–
Black, trailering, vertical, power, heated, manual-folding and extendable, with turn-signal indicators and lower convex spotter glass	–	–	□ <sup>7</sup>	□ <sup>7</sup>	□	–	–
Rear Parking Assist	–	–	□ <sup>8</sup>	□ <sup>8</sup>	□ <sup>9</sup>	–	■
Recovery hooks: Two front (4x4)	■	■	■	–	■	■	■
<b>White Diamond Edition:</b> White Diamond Tricoat exterior color; chrome mirror caps and door handles; and chrome-accented bodyside moldings. LTZ also includes 20" chrome-clad aluminum wheels, chrome recovery hooks, and polished exhaust tip							
	–	–	□ <sup>10</sup>	–	□ <sup>11</sup>	–	–
<b>ENGINES/CHASSIS</b>							
<b>All-Star Edition:</b> Vortec 5.3L V8, automatic locking rear differential, Trailering Package, 17" aluminum wheels, dual-zone automatic climate controls, Bluetooth <sup>®</sup> wireless technology <sup>12</sup> for select phones, CD/MP3 player and USB port, <sup>13</sup> steering wheel-mounted audio controls, six-way power-adjustable driver seat, foglamps and EZ Lift locking tailgate							
Cooler: Engine oil, heavy-duty, external	□ <sup>14</sup>	–	□ <sup>14</sup>	■	■	–	–
Cooler: Transmission fluid, auxiliary, heavy-duty, external	□ <sup>15</sup>	□ <sup>16</sup>	□ <sup>17</sup>	■	■	–	–
Differential: Automatic locking rear	□	□	□	■	■	■	■
Engine block heater	□	□	□	□	□	–	–

	WT	LS	LT	XFE	LTZ	HYBRID <sup>1</sup>	
						IHY	2HY
<b>ENGINES/CHASSIS (CONTINUED)</b>							
<b>MAX Trailering Pack:</b> <sup>18</sup> Vortec 6.2L V8, automatic locking rear differential, 9.5" rear axle, front/rear disc brakes, 3.73 rear axle ratio, 17" aluminum wheels, foglamps, Z85 Handling/Trailering suspension and Trailering Package							
	–	–	□	–	□	–	–
<b>Skid Plate Package:</b> <sup>19</sup> Frame-mounted shield protecting front underbody, oil pan, differential case and transfer case (4x4)							
	□	□	□	–	□	–	–
<b>Steering:</b> Power, rack-and-pinion							
	■	■	■	■	■	■	■
<b>Suspension:</b> Front independent, coil-over-shock; rear two-stage, multi-leaf springs, semi-elliptical							
	■	■	■	■	■	■	■
<b>Suspensions:</b> Z83 Solid Smooth Ride							
Z85 Handling/Trailering	□ <sup>16</sup>	■	■	■	■	■	■
Z60 High-Performance <sup>20</sup>	–	–	□	–	□	–	–
Z71 Off-Road	–	–	□ <sup>21</sup>	–	□	–	–
<b>Transfer case (4x4):</b>							
Floor-mounted, manual shift-on-the-fly	■	■	–	–	–	–	–
Transfer case (4x4): Autotrac, active	–	–	■	–	■	■	■
<b>Trailering Package:</b> Trailer hitch platform, 7-wire harness mated to 7-way sealed connector, trailer brake control jumper harness under dash, external transmission oil cooler and automatic locking rear differential <sup>22</sup>							
	□ <sup>23</sup>	□	□	■	■	■	■
<b>Z71 Appearance Package:</b> 18" aluminum wheels; foglamps; body-color outside mirrors and door handles; unique Z71 decals, instrument cluster graphics, body-color grille with chrome insert, and sill plates; Rancho <sup>®</sup> shocks; and chrome recovery hooks							
	–	–	□ <sup>24</sup>	–	□ <sup>24</sup>	–	–
<b>Z71 Off-Road Package:</b> Skid Plate Package; off-road jounce bumpers, shock absorbers and stabilizer bars; high-capacity air cleaner; and Z71 decals							
	–	–	□ <sup>21</sup>	–	□	–	–
<b>SAFETY &amp; SECURITY</b>							
<b>Air bags:</b> <sup>25</sup> Driver and right-front passenger with Passenger Sensing System; front and rear head-curtain with rollover sensor; front seat-mounted for thorax and pelvic protection							
	■	■	■	■	■	■	■
<b>Brake controller:</b> Trailer, ABS-integrated <sup>16</sup>							
	□	□	□	□	□	□	□
<b>Brakes:</b> Four-wheel antilock (ABS)							
	■	■	■	■	■	■	■
<b>OnStar<sup>26</sup> Directions &amp; Connections</b>							
	□ <sup>27</sup>	–	–	–	–	–	–
<b>OnStar<sup>26</sup> Directions &amp; Connections for six months</b>							
	–	■	■	■	■	■	■
<b>StabiliTrak Electronic Stability Control System</b>							
	–	–	–	–	–	■	■
<b>StabiliTrak Electronic Stability Control System with Trailer Sway Control and Hill Start Assist</b>							
	■	■	■	■	■	–	–
<b>INTERIOR</b>							
<b>Bluetooth wireless technology<sup>12</sup> for select phones</b>							
	□ <sup>28</sup>	□	□ <sup>29</sup>	□ <sup>5</sup>	■	■	■
<b>Climate control:</b> Single-zone, manual							
	■	■	■	■	–	–	–
<b>Dual-zone, automatic</b>							
	–	–	□ <sup>29</sup>	□ <sup>5</sup>	■	■	■
<b>Convenience Package:</b> Power-adjustable pedals, Rear Parking Assist, rear-window defogger, Universal Home Remote and remote vehicle starter system							
	–	–	□	□	–	–	–

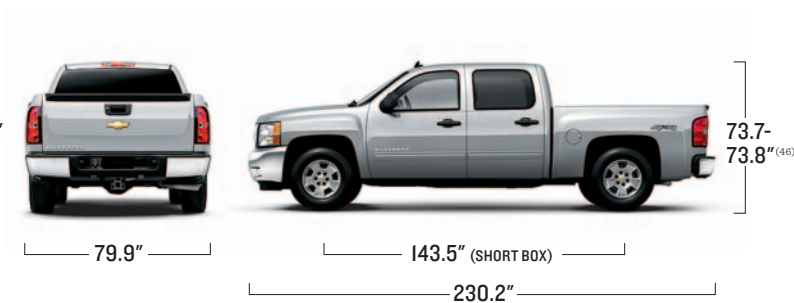
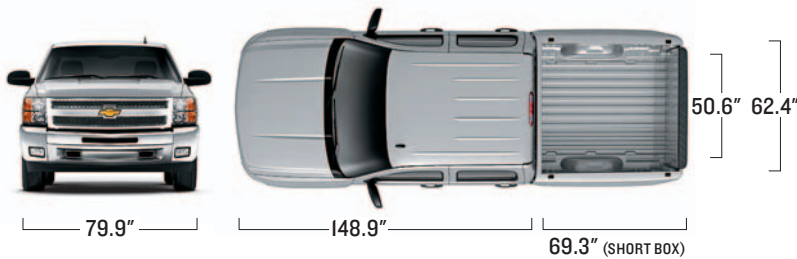
<sup>1</sup> Available at participating dealers. <sup>2</sup> Requires available Z71 Appearance Package. <sup>3</sup> Not available with Z71 Off-Road Package, MAX Trailering Pack or heated trailering mirrors. <sup>4</sup> Requires available All-Star Edition, Interior Plus Package, MAX Trailering Pack or Z71 Appearance Package. <sup>5</sup> Requires available Interior Plus Package. <sup>6</sup> Requires available Windows, Locks and Mirrors Power Package. <sup>7</sup> Requires available auto-dimming inside rearview mirror or auto-dimming inside rearview mirror with rear vision camera display. <sup>8</sup> Requires available Convenience Package. <sup>9</sup> Requires available LTZ Plus Package. <sup>10</sup> Not available with Z71 Appearance Package, Chrome Essentials Package or trailering mirrors. <sup>11</sup> Not available with Vortec 6.2L engine, trailering mirrors, Z71 Off-Road Suspension, Chrome Essentials Package or MAX Trailering Pack. <sup>12</sup> Go to gm.com/bluetooth to find out which phones are compatible with the vehicle. <sup>13</sup> Not compatible with all devices. <sup>14</sup> Requires Heavy-Duty Cooling Package or Vortec 6.2L V8 engine. <sup>15</sup> Requires available Heavy-duty Cooling Package, Snow Plow Prep Package or Trailering Package. <sup>16</sup> Requires available Trailering Package. <sup>17</sup> Requires available Trailering Package, Snow Plow Prep Package or Vortec 6.2L V8 engine. <sup>18</sup> Not available with Z71 Off-Road Package. <sup>19</sup> 2WD models require available Z71 Off-Road Package. <sup>20</sup> Requires available 20" chrome-clad aluminum wheels. <sup>21</sup> Not available with Vortec 4.8L V8 engine. <sup>22</sup> Automatic locking rear differential not included on Fleet or Government orders. <sup>23</sup> Not available with Vortec 4.3L V6 engine or Solid Smooth Ride Suspension. <sup>24</sup> Requires available Z71 Off-Road Package. <sup>25</sup> Always use safety belts and child restraints. Children are safer when properly secured in a rear seat in the appropriate child restraint. See the Owner's Manual for more info. <sup>26</sup> Visit onstar.com for coverage map, details and system limitations. Services vary by model and conditions. <sup>27</sup> Requires available power door locks and Remote Keyless Entry. <sup>28</sup> Requires available OnStar and AM/FM stereo with CD/MP3 player. <sup>29</sup> Requires available All-Star Edition or Interior Plus Package. <sup>30</sup> Not available with Power Sliding rear window. <sup>31</sup> Remote Keyless Entry sold separately when Windows, Locks and Mirrors Power Package is ordered. <sup>32</sup> Not available with All-Star Edition. <sup>33</sup> Requires available heated trailering mirrors. <sup>34</sup> Requires available Convenience Package and Interior Plus Package or All-Star Edition. <sup>35</sup> Not available with rear-window defogger. <sup>36</sup> Requires available bucket seats and Interior Plus Package. <sup>37</sup> Requires a subscription sold separately by SiriusXM. Available only in the 48 contiguous United States and Washington, D.C. Visit siriusxm.com for more information. <sup>38</sup> Requires a subscription sold separately by SiriusXM after trial. Available only in the 48 contiguous United States and Washington, D.C. Visit siriusxm.com for more information. <sup>39</sup> Requires a subscription sold separately by SiriusXM. Available only in select markets. For more information, see siriusxm.com/navtraffic. <sup>40</sup> Requires available navigation system. <sup>41</sup> Requires a subscription sold separately by SiriusXM after trial which is continuous until you call SiriusXM to cancel. Available only in select markets. For more information, see siriusxm.com/navtraffic. <sup>42</sup> Requires available All-Star Edition, MAX Trailering Pack or Z71 Off-Road Package. <sup>43</sup> Requires available MAX Trailering Pack. <sup>44</sup> Requires available Chrome Essentials Package. <sup>45</sup> Requires available Z60 High-Performance Suspension. <sup>46</sup> Depending on model and tire size selected.

# CREW CAB

	WT	LS	LT	XFE	LTZ	HYBRID <sup>1</sup>	
						IHY	2HY
<b>INTERIOR (CONTINUED)</b>							
Defogger: Rear-window <sup>30</sup>	<input type="checkbox"/>	<input type="checkbox"/>	<input type="checkbox"/>	<input checked="" type="checkbox"/>	<input type="checkbox"/>	<input type="checkbox"/>	<input checked="" type="checkbox"/>
Door locks: Power; with Remote Keyless Entry	<input checked="" type="checkbox"/> <sup>31</sup>	<input checked="" type="checkbox"/>	<input checked="" type="checkbox"/>	<input checked="" type="checkbox"/>	<input checked="" type="checkbox"/>	<input checked="" type="checkbox"/>	<input checked="" type="checkbox"/>
Glove boxes: Dual	<input checked="" type="checkbox"/>	<input checked="" type="checkbox"/>	<input checked="" type="checkbox"/>	<input checked="" type="checkbox"/>	<input type="checkbox"/>	<input checked="" type="checkbox"/>	<input checked="" type="checkbox"/>
<b>Interior Plus Package:</b> Six-way power-adjustable driver seat, USB port, <sup>13</sup> steering wheel-mounted audio controls, Bluetooth wireless technology <sup>12</sup> for select phones and dual-zone automatic temperature controls	<input type="checkbox"/>	<input type="checkbox"/>	<input type="checkbox"/> <sup>32</sup>	<input type="checkbox"/>	<input type="checkbox"/>	<input type="checkbox"/>	<input type="checkbox"/>
Mirror, inside rearview: Auto-dimming	<input type="checkbox"/>	<input type="checkbox"/>	<input type="checkbox"/> <sup>33</sup>	<input type="checkbox"/> <sup>33</sup>	<input checked="" type="checkbox"/>	<input type="checkbox"/>	<input checked="" type="checkbox"/>
Rear vision camera system (with display in rearview mirror or nav screen)	<input type="checkbox"/>	<input type="checkbox"/>	<input type="checkbox"/> <sup>34</sup>	<input type="checkbox"/> <sup>34</sup>	<input type="checkbox"/> <sup>9</sup>	<input type="checkbox"/>	<input type="checkbox"/>
Remote vehicle starter system	<input type="checkbox"/>	<input type="checkbox"/>	<input type="checkbox"/> <sup>8</sup>	<input type="checkbox"/> <sup>8</sup>	<input checked="" type="checkbox"/>	<input type="checkbox"/>	<input type="checkbox"/>
Sunroof: Power-sliding, with Express-Open feature	<input type="checkbox"/>	<input type="checkbox"/>	<input type="checkbox"/>	<input type="checkbox"/>	<input type="checkbox"/>	<input type="checkbox"/>	<input type="checkbox"/>
<b>Windows, Locks and Mirrors Power Package:</b> Power driver and passenger side windows with uplevel door panels, outside heated power-adjustable manual folding mirrors and power door locks (Remote Keyless Entry sold separately)	<input type="checkbox"/>	<input type="checkbox"/>	<input type="checkbox"/>	<input type="checkbox"/>	<input type="checkbox"/>	<input type="checkbox"/>	<input type="checkbox"/>
Windows: Power, with driver's Express-Down feature	<input type="checkbox"/> <sup>6</sup>	<input checked="" type="checkbox"/>	<input checked="" type="checkbox"/>	<input checked="" type="checkbox"/>	<input checked="" type="checkbox"/>	<input checked="" type="checkbox"/>	<input checked="" type="checkbox"/>
Windows: Power-sliding, rear <sup>35</sup>	<input type="checkbox"/>	<input type="checkbox"/>	<input type="checkbox"/>	<input type="checkbox"/>	<input type="checkbox"/>	<input type="checkbox"/>	<input type="checkbox"/>
<b>SEATING</b>							
Vinyl 40/20/40 split-bench front seat with recliners and fold-down center armrest with storage	<input checked="" type="checkbox"/>	<input type="checkbox"/>	<input type="checkbox"/>	<input type="checkbox"/>	<input type="checkbox"/>	<input type="checkbox"/>	<input type="checkbox"/>
Cloth 40/20/40 split-bench front seat with recliners, manual lumbar support and fold-down center armrest with storage	<input type="checkbox"/>	<input checked="" type="checkbox"/>	<input type="checkbox"/>	<input type="checkbox"/>	<input type="checkbox"/>	<input type="checkbox"/>	<input type="checkbox"/>
Premium Cloth 40/20/40 split-bench front seat with recliners, manual lumbar support, fold-down center armrest with storage and lockable underseat storage. Also available with Custom Leather-appointed trim	<input type="checkbox"/>	<input type="checkbox"/>	<input checked="" type="checkbox"/>	<input checked="" type="checkbox"/>	<input type="checkbox"/>	<input checked="" type="checkbox"/>	<input type="checkbox"/>
Premium Cloth, reclining, six-way power-adjustable front bucket seats and manual lumbar support. Also available with Custom Leather-appointed trim	<input type="checkbox"/>	<input type="checkbox"/>	<input type="checkbox"/>	<input type="checkbox"/>	<input type="checkbox"/>	<input type="checkbox"/>	<input checked="" type="checkbox"/>

■ STANDARD □ AVAILABLE – NOT AVAILABLE

	WT	LS	LT	XFE	LTZ	HYBRID <sup>1</sup>	
						IHY	2HY
<b>SEATING (CONTINUED)</b>							
Custom Leather-appointed, reclining, heated, 10-way power-adjustable front bucket seats with memory and power lumbar support	<input type="checkbox"/>	<input type="checkbox"/>	<input type="checkbox"/>	<input type="checkbox"/>	<input checked="" type="checkbox"/>	<input type="checkbox"/>	<input type="checkbox"/>
Custom Leather-appointed with perforated inserts, reclining, heated and cooled, 10-way power-adjustable front bucket seats with memory and power lumbar support	<input type="checkbox"/>	<input type="checkbox"/>	<input type="checkbox"/>	<input type="checkbox"/>	<input type="checkbox"/>	<input type="checkbox"/>	<input type="checkbox"/>
Rear seat: Flip-up, full-width bench Flip-up, 60/40 split-bench	<input type="checkbox"/>	<input type="checkbox"/>	<input type="checkbox"/>	<input type="checkbox"/>	<input type="checkbox"/>	<input checked="" type="checkbox"/>	<input checked="" type="checkbox"/>
<b>AUDIO SYSTEMS</b>							
AM/FM stereo	<input checked="" type="checkbox"/>	<input type="checkbox"/>	<input type="checkbox"/>	<input type="checkbox"/>	<input type="checkbox"/>	<input type="checkbox"/>	<input type="checkbox"/>
AM/FM stereo with CD/MP3 player	<input type="checkbox"/>	<input checked="" type="checkbox"/>	<input checked="" type="checkbox"/>	<input checked="" type="checkbox"/>	<input type="checkbox"/>	<input checked="" type="checkbox"/>	<input type="checkbox"/>
AM/FM stereo with CD/MP3 player and USB port <sup>13</sup>	<input type="checkbox"/>	<input type="checkbox"/>	<input type="checkbox"/> <sup>29</sup>	<input type="checkbox"/> <sup>5</sup>	<input checked="" type="checkbox"/>	<input type="checkbox"/>	<input type="checkbox"/>
AM/FM stereo with in-dash six-disc CD/MP3 changer and USB port <sup>13</sup>	<input type="checkbox"/>	<input type="checkbox"/>	<input type="checkbox"/>	<input type="checkbox"/>	<input type="checkbox"/>	<input type="checkbox"/>	<input type="checkbox"/>
Bose® sound system	<input type="checkbox"/>	<input type="checkbox"/>	<input type="checkbox"/> <sup>36</sup>	<input type="checkbox"/> <sup>36</sup>	<input checked="" type="checkbox"/>	<input type="checkbox"/>	<input checked="" type="checkbox"/>
DVD entertainment system: Rear-seat	<input type="checkbox"/>	<input type="checkbox"/>	<input type="checkbox"/>	<input type="checkbox"/>	<input type="checkbox"/>	<input type="checkbox"/>	<input type="checkbox"/>
Touch-screen navigation radio	<input type="checkbox"/>	<input type="checkbox"/>	<input type="checkbox"/>	<input type="checkbox"/>	<input type="checkbox"/>	<input type="checkbox"/>	<input checked="" type="checkbox"/>
SiriusXM Satellite Radio <sup>37</sup>	<input type="checkbox"/> <sup>28</sup>	<input type="checkbox"/>	<input type="checkbox"/>	<input type="checkbox"/>	<input type="checkbox"/>	<input type="checkbox"/>	<input type="checkbox"/>
SiriusXM Satellite Radio <sup>38</sup> with three trial months	<input type="checkbox"/>	<input checked="" type="checkbox"/>	<input checked="" type="checkbox"/>	<input checked="" type="checkbox"/>	<input checked="" type="checkbox"/>	<input checked="" type="checkbox"/>	<input checked="" type="checkbox"/>
NavTraffic <sup>39</sup>	<input type="checkbox"/>	<input type="checkbox"/>	<input type="checkbox"/>	<input type="checkbox"/>	<input type="checkbox"/>	<input type="checkbox"/> <sup>40</sup>	<input type="checkbox"/>
NavTraffic <sup>41</sup> with three trial months	<input type="checkbox"/>	<input type="checkbox"/>	<input type="checkbox"/>	<input type="checkbox"/>	<input type="checkbox"/>	<input type="checkbox"/>	<input checked="" type="checkbox"/>
<b>WHEELS</b>							
17" steel	<input checked="" type="checkbox"/>	<input type="checkbox"/>	<input type="checkbox"/>	<input type="checkbox"/>	<input type="checkbox"/>	<input type="checkbox"/>	<input type="checkbox"/>
17" chrome styled-steel	<input type="checkbox"/>	<input checked="" type="checkbox"/>	<input checked="" type="checkbox"/>	<input type="checkbox"/>	<input type="checkbox"/>	<input type="checkbox"/>	<input type="checkbox"/>
17" aluminum	<input type="checkbox"/>	<input type="checkbox"/>	<input type="checkbox"/> <sup>42</sup>	<input checked="" type="checkbox"/>	<input type="checkbox"/> <sup>43</sup>	<input type="checkbox"/>	<input type="checkbox"/>
18" chrome-clad aluminum	<input type="checkbox"/>	<input type="checkbox"/>	<input type="checkbox"/> <sup>44</sup>	<input type="checkbox"/>	<input checked="" type="checkbox"/>	<input checked="" type="checkbox"/>	<input checked="" type="checkbox"/>
18" aluminum	<input type="checkbox"/>	<input type="checkbox"/>	<input type="checkbox"/> <sup>24</sup>	<input type="checkbox"/>	<input type="checkbox"/> <sup>24</sup>	<input type="checkbox"/>	<input type="checkbox"/>
20" chrome-clad aluminum	<input type="checkbox"/>	<input type="checkbox"/>	<input type="checkbox"/> <sup>45</sup>	<input type="checkbox"/>	<input type="checkbox"/> <sup>45</sup>	<input type="checkbox"/>	<input type="checkbox"/>

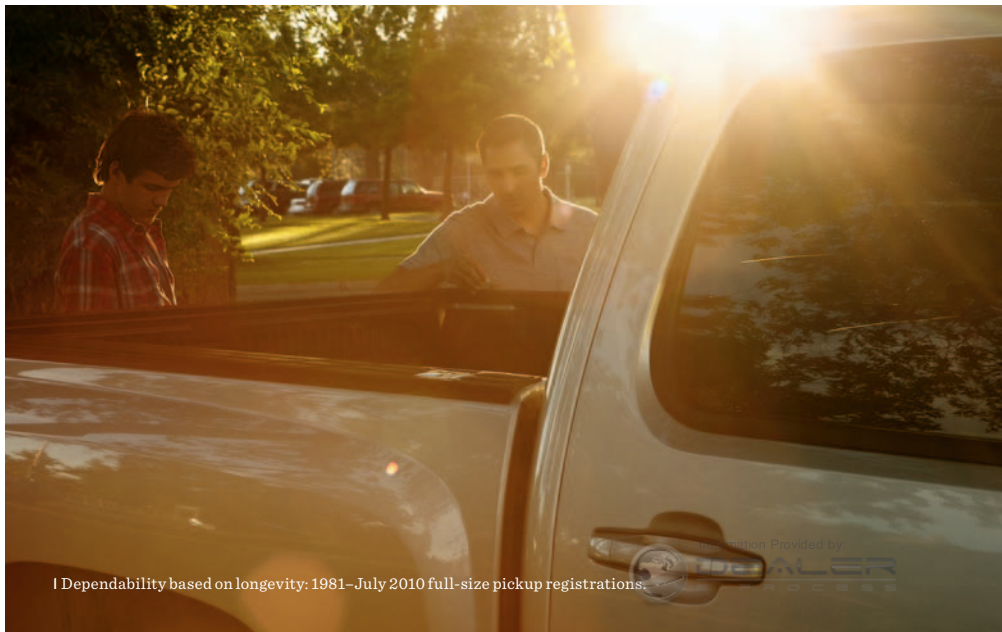


PICKUP MODEL	SERIES	DRIVE	TRIM LEVELS	STANDARD ENGINE	HP @ RPM	TORQUE @ RPM	STANDARD TRANSMISSION	OPTIONAL ENGINES
<b>CREW CAB SHORT BOX</b>	1500 (1/2-ton)	2WD/4x4	WT, LS, LT	Vortec 4.8L V8	302 @ 5600	305 @ 4600	Hydra-Matic 4-speed automatic overdrive	Vortec 5.3L V8
		2WD/4x4	LTZ	Vortec 5.3L V8	315 @ 5200	335 @ 4000	Hydra-Matic 6-speed automatic overdrive	Vortec 6.2L V8
		2WD	XFE	Vortec 5.3L V8	315 @ 5200	335 @ 4000	Hydra-Matic 6-speed automatic overdrive	—
<b>MAX Trailering Pack</b>		2WD/4x4	Hybrid	Vortec 6.0L V8	332 @ 5100	367 @ 4100	Hybrid-specific	—
		2WD/4x4	LT, LTZ	Vortec 6.2L V8	403 @ 5700	417 @ 4300	Hydra-Matic 6-speed automatic overdrive	—





# BUILDING THE MOST DEPENDABLE, LONGEST- LASTING FULL-SIZE PICKUPS ON THE ROAD.<sup>1</sup>



<sup>1</sup>Dependability based on longevity: 1981–July 2010 full-size pickup registrations.

# IMPORTANT INFORMATION

**100,000-MILE/5-YEAR TRANSFERABLE POWERTRAIN LIMITED WARRANTY.** Every 2012 Chevy passenger car, light-duty truck, SUV and crossover comes with a 100,000-mile/5-year (whichever comes first) transferable Powertrain Limited Warranty. Plus, you get 100,000 miles/5 years (whichever comes first) of the 24/7 Roadside Assistance Program, the Courtesy Transportation Program, and much more. See dealer for details.

**NEW VEHICLE LIMITED WARRANTY.** GM vehicles registered in the USA are covered for 36,000 miles/3 years (whichever comes first). The complete vehicle is covered, including tires, towing to your nearest Chevrolet dealership and cosmetic corrosion resulting from defects. Repairs will be made to correct any vehicle defect, and most warranty repairs will be made at no charge. In addition, rust-through corrosion will be covered for 100,000 miles/6 years (whichever comes first). See dealer for details.

**ENGINES.** Chevrolet products are equipped with engines produced by GM Powertrain or other suppliers to GM worldwide. The engines in Chevrolet products may also be used in other GM makes and models.

**ASSEMBLY.** Chevrolet vehicles and their components are assembled or produced by different operating units of General Motors, its subsidiaries or suppliers to GM worldwide. We sometimes find it necessary to produce Chevrolet vehicles with different or differently sourced components than originally scheduled. Since some options may be unavailable when your vehicle is assembled, we suggest you verify that your vehicle includes the equipment you ordered and that, if there were changes, they are acceptable to you.

**ONSTAR.** OnStar services require vehicle electrical system (including battery), wireless service and GPS satellite signals to be available and operating for features to function properly. OnStar acts as a link to existing emergency service providers. Subscription Service Agreement required. Call 1-888-4ONSTAR (1-888-466-7827) or visit [onstar.com](http://onstar.com) for OnStar Terms and Conditions, Privacy Policy, details and system limitations.

**A NOTE ON CHILD SAFETY.** Always use safety belts and the correct restraint for your child's age and size. Even in vehicles equipped with the Passenger Sensing System, children are safer when properly secured in a rear seat in the appropriate infant, child or booster seat. Never place a rear-facing infant restraint in the front seat of any vehicle equipped with a passenger air bag. See the Owner's Manual and child safety seat instructions for more safety information.

**IMPORTANT WORDS ABOUT THIS CATALOG.** We have tried to make this catalog comprehensive and factual. We reserve the right, however, to make changes at any time, without notice, in prices, colors, materials, equipment, specifications, models and availability. Specifications, dimensions, measurements, ratings and other numbers in this catalog and other printed materials provided at the dealership or affixed to vehicles are approximations based upon design and engineering drawings, prototypes and laboratory tests. Your vehicle may differ due to variations in manufacture and equipment. Since some information may have been updated since the time of printing, please check with your Chevrolet dealer for complete details. Chevrolet reserves the right to lengthen or shorten the model year for any product for any reason or to start and end model years at different times. Certain vehicle features may lose their usefulness over time due to obsolescence from technological changes. Unless otherwise noted, all claims based on GM Large Pickup segment and latest available competitive information. Excludes other GM vehicles.

**TRAILERING AND OFF-ROAD DRIVING INFORMATION.** Please go to [chevy.com](http://chevy.com) and carefully review an Owner's Manual for important safety information about trailering or off-road driving in your vehicle.

**FLEET ORDERS.** Some standard content may be deleted on fleet orders. See dealer for details.

**OWNER SERVICES.** Chevrolet is committed to enhancing the ownership experience through a wide array of programs. For more information about 24-hour Roadside Assistance, Courtesy Transportation, Customer Assistance Center, Chevy Safety, marketing and incentives, visit [chevy.com](http://chevy.com).

**GMMOBILITY.COM** (1-800-323-9935). GM Mobility<sup>SM</sup> offers financial assistance for eligible adaptive equipment to make automotive travel easier for persons with disabilities or special transportation needs. To learn more about special GM Mobility offers, visit [gmmobility.com](http://gmmobility.com).

**CHEVROLET OWNER CENTER (GMOWNERCENTER.COM/CHEVY).** Register your vehicle with the Chevrolet Owner Center, and receive benefits such as online access to your vehicle Owner's Manual, maintenance schedule reminders, service history tracking, warranty and service information, safety information, special offers and privileges, and news and events.

**GMCARDMEMBERSERVICES.COM.** Did you know about the family of reward credit cards that can help you get a great deal on a new GM car, light-duty truck, SUV or crossover? With a GM reward card, you accrue earnings on every credit card purchase to use toward the purchase or lease of an eligible new GM vehicle. With three cards to choose from, you're sure to find one that suits you best.

GM, the GM Logo, Chevrolet, the Chevrolet Logo, and the slogans, emblems, vehicle model names, vehicle body designs and other marks appearing in this catalog are the trademarks and/or service marks of General Motors, its subsidiaries, affiliates or licensors. ©2011 OnStar. All rights reserved. SiriusXM and all related marks and logos are trademarks of SiriusXM Radio Inc. and its subsidiaries. The Bluetooth word mark is a registered trademark owned by Bluetooth SIG, Inc., and any use of such mark by Chevrolet is under license. ©2011 General Motors. All rights reserved. September 2011

## OWNERSHIP EXTRAS



[chevy.com/warranty](http://chevy.com/warranty)



ACCESSORIES

[chevy.com/accessories](http://chevy.com/accessories)



[onstar.com](http://onstar.com)



[siriusxm.com](http://siriusxm.com)



Information Provided by:  
**DEALER**  
STEP PROCESS







YEARS OF CHEVROLET

