 chevy.com



CHEVROLET

11CHESILCAT01

Information Provided by:
DEALER
STAFF PROCESS

2011 Chevrolet Silverado



Information Provided by:
DEALER
PROCESS

**“...A PRIME CHOICE FOR
A FULL-SIZE PICKUP.”**

– Edmunds



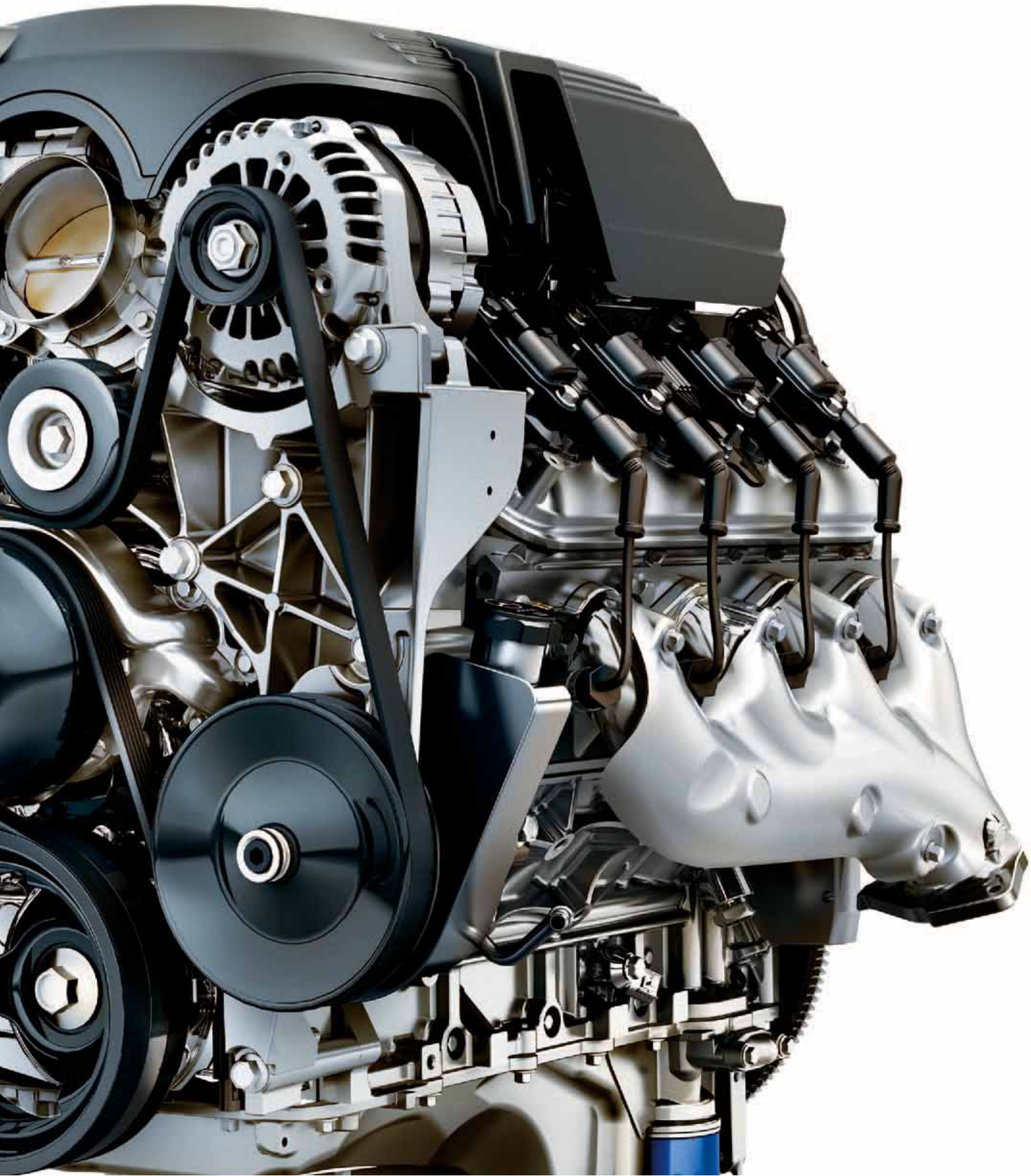
Meet the entire Silverado lineup – including the new 2011 Silverado HD – at chevy.com/silverado.

Sometimes, the most important things we build are relationships. Sure, Silverado can help construct roads and bridges. Front porches and back decks. Things that matter. Things that last. But the most important thing we've built over the last 90 years is a bond with truck owners. A commitment to giving them what they need so they can get the job done. Like proven power, including an available Vortec 6.2L V8 engine that generates 403 horses and 417 lb.-ft. of torque, making Silverado the most powerful half-ton crew cab. Or choose the available MAX Trailering Pack, which gives Extended Cab models the ability to tow 10,700 lbs.¹ or haul 1,925 lbs. of payload.² And to guarantee the quality, there's the 100,000 mile/5-year³ Powertrain Warranty. **Silverado – the most dependable, longest-lasting full-size pickups on the road.⁴**



At left: Silverado Extended Cab Standard Box LT in Blue Granite Metallic with available features and dealer-installed Chevy Accessories. Below: Silverado Crew Cab Short Box LTZ 4x4 in Imperial Blue Metallic with available features and dealer-installed Chevy Accessories. ¹ Maximum trailer weight ratings are calculated assuming a base vehicle, except for any option(s) necessary to achieve the rating, plus driver. The weight of other optional equipment, passengers and cargo will reduce the maximum trailer weight your vehicle can tow. See your Chevy dealer for additional details. ² Maximum payload capacity includes weight of driver, passengers, optional equipment and cargo. ³ Whichever comes first. See dealer for limited warranty details. ⁴ Dependability based on longevity: 1981–July 2009 full-size pickup registrations. The Best Buy Seal is a registered trademark of Consumers Digest Communications, LLC, used under license.





“POWERTRAIN PERFORMANCE AND HAULING CAPABILITY ARE WHERE THE SILVERADO LINEUP SHINES.”¹ – TheCarConnection.com


See the job. Do the job. That’s the attitude you can take when you drive a Chevrolet Silverado, because every Vortec V8 engine that’s available in our full-size pickup is capable of generating over 300 horses and 300 lb.-ft. of torque. If you want to take the ultimate power trip, step up to the available Vortec 6.2L V8 that generates **403 hp and 417 lb.-ft. of torque**, making it – without a doubt – the **most powerful half-ton crew cab**. Or maybe you’re looking for the most powerful heavy-duty ever made. Check out the new Silverado HD at chevy.com/NewSilveradoHD.

FlexFuel capability. The Vortec 4.8L, 5.3L and 6.2L V8 engines available on Silverado 1500 can operate on either regular unleaded gasoline, E85² – a blend of 85% ethanol and 15% gasoline – or any combination of both. Because ethanol is made from primarily organic, domestic resources, E85 is a **mostly renewable, cleaner-burning fuel** that can help reduce our dependence on petroleum and reduce tailpipe emissions. Plus, E85 generally has a higher octane rating than regular unleaded gasoline, which can result in slightly **higher horsepower and torque levels**.

Power and efficiency are the trademarks of a Vortec engine. The Vortec 5.3L V8 engine included on Silverado XFE offers an impressive combination of **315 horsepower** and an EPA estimated **15 MPG city, 22 highway** when running on gasoline – a fuel economy number that’s **better than Ford F-150, Dodge Ram and Toyota Tundra**.³

Available Vortec 5.3L V8 FlexFuel engine. ¹ Quote was originally in reference to 2010 Silverado. ² E85 is a combination of 85% ethanol and 15% gasoline. Go to chevy.com/biofuels to see if there is an E85 fuel station near you. When running on E85, Silverado 1500 with 4.8L V8 engine offers an EPA estimated 10 MPG city, 14 highway; Silverado 1500 with 5.3L V8 engine offers an EPA estimated 11 MPG city, 16 highway; and Silverado 1500 with 6.2L V8 engine offers an EPA estimated 10 MPG city, 14 highway. ³ EPA estimated MPG (city/highway): 2010 F-150 15/21; Ram 1500 14/20; Tundra 15/20. ⁴ When running on E85 FlexFuel. ⁵ Limited availability.

ENGINE	HP @ RPM	TORQUE @ RPM	STANDARD TRANSMISSION
Vortec 4.3L V6	195 @ 4600	260 @ 2800	Hydra-Matic 4-speed automatic overdrive
Vortec 4.8L V8	302 @ 5600	305 @ 4600	Hydra-Matic 4-speed automatic overdrive
Vortec 5.3L V8	315 @ 5200/326 @ 5300 ⁴	335 @ 4400/348 @ 4400 ⁴	Hydra-Matic 6-speed automatic overdrive
Hybrid Vortec 6.0L V8 ⁵	332 @ 5100	367 @ 4100	Hybrid-specific
Vortec 6.2L V8	403 @ 5700	417 @ 4300	Hydra-Matic 6-speed automatic overdrive



“...IT’S HARD TO FIND A
COMPETITOR WITH A
BETTER COMBINATION OF
RUGGEDNESS, CAPABILITY
AND COMFORT.”

– *U.S. News & World Report*¹

Everyone needs to pull their weight. And then some. That’s no problem for Silverado 1500. With the available **MAX Trailering Pack**, Extended Cab models can **tow 10,700 lbs²** (10,600 with Crew Cab models). The package gives you a strong, 9.5" rear axle that helps you carry or tow heavy loads and the Vortec 6.2L V8 engine with **more horsepower and torque than any other half-ton crew cab pickup**. It also includes a **GM segment-exclusive automatic locking rear differential** for more grip and less slip when you need it most.

On every Silverado, **Tow/Haul mode** is standard and helps improve transmission performance when there’s a big trailer behind you. You’ll find all the gear to help you tow in the available **Heavy-Duty Trailering Package**, including a trailer hitch platform, 7-wire harness mated to 7-way sealed connector, an available **trailer brake controller** is fully integrated with the antilock brake system.

Silverado Extended Cab Standard Box 4x4 in Sheer Silver Metallic with available features. ¹ U.S. News & World Report’s Car Rankings at usnews.com/cars. ² Maximum trailer weight ratings are calculated assuming a base vehicle, except for any option(s) necessary to achieve the rating, plus driver. The weight of other optional equipment, passengers and cargo will reduce the maximum trailer weight your vehicle can tow. See your Chevy dealer for additional details. ³ LT requires available Convenience Package; LTZ requires available LTZ Plus Package and Convenience Package.

 Check out Silverado in action at chevy.com/silverado.



TOWING EQUIPMENT

If you need to get into perfect position to hook up a trailer, an available rearview camera system³ gives you eyes in the back of your truck. Extended Cab and Crew Cab LT and LTZ can be equipped with packages that include Ultrasonic Rear Parking Assist, which provides a warning when you're getting close to certain stationary objects, such as your trailer, while driving in Reverse at low speeds. And two camper mirror options with convex spotter glass are available to help you see what's happening behind you.



1500 MAXIMUM PAYLOAD³ (LBS.)

Engine	GVWR ⁴ (lbs.)	Regular Cab				Extended Cab				Crew Cab	
		Standard Box 2WD	Long Box 2WD	Standard Box 4x4	Long Box 4x4	Standard Box 2WD	Long Box 2WD	Standard Box 4x4	Long Box 4x4	Short Box 2WD	Short Box 4x4
Vortec 4.3L V8	6,400	1,937	1,806	1,693	1,545	1,494	—	—	—	—	—
Vortec 4.8L V8	7,000	—	—	—	—	—	—	1,733	—	—	1,671
	6,800	—	—	—	1,815	1,759	—	—	—	1,705	—
	6,400	1,815	1,684	1,566	—	—	—	—	—	—	—
Vortec 5.3L V8 XFE	6,700	—	—	—	—	—	—	—	—	1,663	—
Vortec 5.3L V8	7,000	—	—	—	—	—	—	1,788	1,512	—	1,732
	6,900	—	—	—	—	—	1,656	—	—	—	—
	6,800	—	—	—	1,779	1,732	—	—	—	1,666	—
	6,400	1,768	1,649	1,523	—	—	—	—	—	—	—
Vortec 6.0L Hybrid	7,300	—	—	—	—	—	—	—	—	—	1,519
	7,100	—	—	—	—	—	—	—	—	1,553	—
Vortec 6.2L V8 with MAX Trailering Pack	7,300	—	—	—	—	—	—	—	—	—	1,928
	7,200	—	—	—	—	—	—	1,879	—	—	—
	7,100	—	—	—	—	—	—	—	—	1,980	—
	7,000	—	—	—	—	1,925	—	—	—	—	—
Vortec 6.2L V8	7,000	—	—	—	—	—	—	1,679	—	—	1,628
	6,800	—	—	—	—	1,725	—	—	—	1,680	—

TRAILERING BASICS

NOTE: Towing a trailer involves all major vehicle systems of your Chevy Truck. Easy and safe trailering requires a properly equipped vehicle, additional trailering equipment and an appropriate trailer. It also requires loading both the vehicle and trailer properly, using safe driving techniques, meeting regional legal requirements, and following break-in and maintenance schedules. The vehicle owner is responsible for obtaining the proper equipment (hitch ball, hitch type of the proper size, type and capacity) required to safely tow both the trailer and the load that will be towed. For more information, consult your Owner's Manual or speak to a trailering expert at your Chevrolet dealership. These charts will assist in determining how to best equip your Chevy Truck for trailering. To help you understand the charts, consider these trailering factors:

RGAWR AND GVWR: Addition of trailer hitch weight cannot cause vehicle weights to exceed Rear Gross Axle Weight Rating (RGAWR) or Gross Vehicle Weight Rating (GVWR). These ratings can be found on the certification label located on the driver door or doorframe.

GCWR: The Gross Combination Weight Rating is the total allowable weight of the completely loaded vehicle and trailer.

MAXIMUM TRAILER RATING: This rating is determined by subtracting the tow vehicle's weight (curb weight) from the GCWR. When a base vehicle (curb) weight is used, additional passenger, equipment and cargo weight reduces this rating.

NOTE: The safety steps described here are by no means the only precautions to be taken when trailering. See the Owner's Manual for your Chevy Silverado for additional guidelines and trailering tips.

TRAILERING CAUTION: If you don't use the correct equipment and drive properly, you can lose control of your vehicle when you pull a trailer. If the trailer is too heavy, your vehicle brakes may be less effective. You and your passengers could be seriously injured. Pull a trailer only after you have taken the following steps.

TRAILER BRAKES: If your trailer weighs more than 2,000 lbs. loaded, then it must have its own adequate brakes. Be sure to read and follow the instructions for the trailer brake controller so that it is installed, adjusted and maintained properly. • Don't tap into your vehicle's brake system if the trailer's brake system will use more than 0.02 cu. in. of fluid from your vehicle's master cylinder. If it does, neither braking system will work well. • The trailer brake parts must be able to take 3,000 psi of pressure. If everything checks out thus far, have a qualified individual make the brake fluid tap at the master cylinder port that sends fluid to the rear brakes. Use only double-walled steel brake tubing.

HITCHES: It's important to have the correct hitch equipment. • If you'll be towing a trailer that, when loaded, will weigh more than 5,000 lbs.⁵ be sure to use a frame-mounted, weight-distributing hitch and sway control of the proper size. • If you have to make any holes in the body of your vehicle to install a trailer hitch, be sure to seal the holes if you ever remove the hitch. If they're not sealed, dirt, water and deadly carbon monoxide from the exhaust can get into your vehicle.

FIFTH-WHEEL TRAILERING: Silverado pickups can be equipped with a fifth-wheel or gooseneck trailer hitch. • Follow the manufacturer's directions for installation, but note that the hitch must be attached to the truck frame. Do not use the pickup bed for additional support. For proper kingpin tongue load distribution and control of the trailer, the hitch must be mounted so the kingpin load is placed ahead of the rear axle centerline. • Fifth-wheel trailer kingpin loads are higher than conventional trailer tongue loads, so pay careful attention to the truck's payload capacity and rear axle weight ratings. • Your Chevy dealer can help you calculate the maximum allowable payload and GVWR required for your fifth-wheel trailering application. The weight of any additional equipment and all passengers other than the driver must be subtracted from the payload weight to determine the maximum kingpin load available.

1500 BALL-HITCH TRAILERING¹ (LBS.)

Weight-carrying hitch limit: 5,000-lb. trailer with 600-lb. tongue weight. Z85 Handling/Trailer suspension or Z71 Off-Road suspension and a weight-distributing hitch with sway control required over 5,000-lb. trailer weight. Please read the Trailering Basics on the next page before towing a trailer with any Chevy Truck.

Engine	Axle Ratio	GCWR ² (lbs.)	Regular Cab				Extended Cab				Crew Cab	
			Standard Box 2WD	Long Box 2WD	Standard Box 4x4	Long Box 4x4	Standard Box 2WD	Long Box 2WD	Standard Box 4x4	Long Box 4x4	Short Box 2WD	Short Box 4x4
Vortec 4.3L V6	3.73	10,000	5,400	5,200	5,100	4,900	–	–	–	–	–	–
	3.23	9,500	4,800	4,700	–	–	4,400	–	–	–	–	–
Vortec 4.8L V8	3.73	12,000	7,200	7,100	–	–	6,700	–	–	–	6,700	–
	3.42	11,000	–	–	6,000	5,800	–	–	5,500	–	–	5,500
	3.23	10,000	–	5,100	–	–	4,700	–	–	–	4,700	–
	3.23	9,500	4,700	–	–	–	–	–	–	–	–	–
Vortec 5.3L V8 with Heavy-Duty Cooling Package	3.42	15,000	–	10,000	–	9,800	9,700	9,500	9,600	9,300	9,600	9,500
	3.42	14,000	9,100	–	8,900	–	–	–	–	–	–	–
	3.08	12,200	7,400	7,200	7,100	7,000	6,900	6,700	6,800	6,500	6,900	6,700
Vortec 5.3L V8 XFE	3.08	12,200	–	–	–	–	–	–	–	–	7,000	–
Vortec 5.3L V8	3.08	11,500	6,600	6,500	6,400	6,300	6,200	6,000	6,100	5,800	6,200	6,000
Vortec 6.0L Hybrid	3.08	12,000	–	–	–	–	–	–	–	–	6,100	5,900
Vortec 6.2L V8 with MAX Trailering Pack	3.73	16,000	–	–	–	–	10,700	–	10,400	–	10,600	10,400
Vortec 6.2L V8	3.42	15,000	–	–	–	–	9,700	–	9,400	–	9,700	9,400

1500 FIFTH-WHEEL TRAILERING¹ (LBS.)

Fifth-wheel trailering with a Silverado 1500 requires Z85 Handling/Trailer suspension or Z71 Off-Road suspension. Please read the Trailering Basics on the next page before towing a trailer with any Chevy Truck.

Engine	Axle Ratio	GCWR ² (lbs.)	Regular Cab				Extended Cab			
			Standard Box 2WD	Long Box 2WD	Standard Box 4x4	Long Box 4x4	Standard Box 2WD	Long Box 2WD	Standard Box 4x4	Long Box 4x4
Vortec 5.3L V8 with Heavy-Duty Cooling Package	3.42	15,000	–	8,900	–	9,700	9,400	9,000	9,600	8,100
	3.42	14,000	9,200	–	8,200	–	–	–	–	–
	3.08	12,200	7,400	7,200	7,100	7,000	–	–	–	–
Vortec 6.2L V8 with MAX Trailering Pack	3.73	16,000	–	–	–	–	10,600	–	10,300	–
Vortec 6.2L V8	3.42	15,000	–	–	–	–	9,400	–	9,100	–

¹ Maximum trailer weight ratings are calculated assuming a base vehicle, except for any option(s) necessary to achieve the rating, plus driver. The weight of other optional equipment, passengers and cargo will reduce the maximum trailer weight your vehicle can tow. See your Chevy dealer for additional details. ² Gross Combination Weight Rating. ³ Maximum payload capacity includes weight of driver, passengers, optional equipment and cargo. ⁴ Gross Vehicle Weight Rating (GVWR). When properly equipped; includes vehicle, passengers, cargo and equipment. NOTE: Trailer tongue weight should be 10 to 15 percent of total loaded trailer weight. Trailer kingpin weight should be 15 to 25 percent of total loaded trailer weight. • Addition of trailer tongue weight/trailer kingpin weight cannot cause vehicle weights to exceed Rear Gross Axle Weight Rating (RGAWR) or Gross Vehicle Weight Rating (GVWR). These ratings can be found on the certification label located on the driver door or doorframe. • Fifth-wheel hitch is available as a dealer-installed accessory on select models. See the Trailering Basics for more trailering information. ⁵ Maximum trailer rating may be less depending on powertrain combination.

“...AN OUTSTANDING FOUNDATION TO TACKLE TOUGH CHORES.” – Cars.com

FRONT FRAME TECHNOLOGY

The advanced front frame design is fully boxed and utilizes hydroforming technology. Hydroforming allows for fewer welds, which provide clean attachment points with a better fit to the frame. This smart combination supplies immense overall frame strength and durability plus excellent road isolation and ride performance.

BIG PAYLOAD NUMBERS

With the available MAX Trailering Pack, Silverado Crew Cab can haul up to 1,980 lbs.¹ of whatever it takes to get the job done.

REAR FRAME STRENGTH

The rear frame is fully boxed back to the spare tire cross member, where it becomes a C-channel. This ingenious, strong design boosts payload capacity without adding unnecessary mass.

SMOOTH RIDE AND RESPONSIVE HANDLING

A standard coil-over-shock front suspension and a wide front track provide great on-center feel, smooth out minor road irregularities, and supply excellent handling and stability on nearly all road surfaces. You'll also get an unexpectedly smooth and controlled ride with durable, fade-resistant front and rear shocks.

QUIET RIDE

Hydraulic engine mounts on Extended Cab and Crew Cab models, an underhood blanket, exhaust and induction tuning optimization, thick front and engine-side dash mats, a back-of-cab acoustic mat, small exterior gaps and impressive aerodynamics all help to provide a quiet ride by isolating noise and vibration.



1500 AND HYBRID MAXIMUM PAYLOAD¹ (LBS.)

Model	Regular Cab		Extended Cab		Crew Cab
	Standard Box	Long Box	Standard Box	Long Box	Short Box
1500 2WD	1,937	1,806	1,925	1,656	1,980
1500 4x4	1,693	1,815	1,879	1,512	1,928
1500 XFE	—	—	—	—	1,663
HYBRID ² 2WD	—	—	—	—	1,553
HYBRID ² 4x4	—	—	—	—	1,519

Silverado Crew Cab Short Box LTZ 4x4 in Victory Red. 1 Maximum payload capacity includes weight of driver, passengers, optional equipment and cargo. 2 Limited availability.







Mountains to climb. Mud to sling. Roads to leave behind. You can do all that with the available Z71 Off-Road Package and barely break a sweat. The **legendary Z71 suspension** includes 46mm high-pressure gas-charged shocks, a 36mm front stabilizer bar and off-road jounce bumpers to absorb large suspension inputs.

Heading for the deep stuff? The **Skid Plate Package** is there to help protect the undercarriage from debris that is kicked up. There's also the **GM segment-exclusive automatic locking rear differential** that sends power to the rear wheel with grip if the other wheel loses traction.

For 4x4 drivers, there's the available **Autotrac** system. And when you want to take it back on-road, Silverado offers the **best available 4x4 fuel economy¹ of any full-size pickup.**

The **Z71 Appearance Package²**, available on Extended Cab Standard Box and Crew Cab Short Box models, includes body-color front bumper lower and center sections with body-color end caps, a body-color grille with chrome insert, unique Z71 decals, bright door sill plates, chrome recovery hooks, body-color outside mirrors and door handles, and foglamps. Eighteen-inch aluminum wheels and **Rancho[®] front and rear shocks** raise the Z71 performance level even higher.

Silverado Extended Cab Standard Box LT 4x4 in Sheer Silver Metallic with available Z71 Off-Road Package, Z71 Appearance Package and other features. ¹ Based on GM Large Pickup segment and available 5.3L V8 that has an EPA estimated 15 MPG city, 21 highway and Silverado Hybrid 4x4 that has an EPA estimated 20 MPG city, 23 highway. ² Requires available Z71 Off-Road Package.



INTERIOR COMFORT

There's one place like home. Heated, leather-appointed front bucket seats in Silverado LTZ feature dual-firmness foam in the cushions and 10-way power adjusters. Combine that with available power-adjustable pedals, and your driver seat becomes your mobile comfort zone. An LTZ-exclusive woodgrain-appearance instrument panel that's located down and forward provides added spaciousness and a commanding view of the road. The **remote vehicle starter system** operates from up to 195 feet away and gives you long-distance climate control by heating or cooling the interior to your preset specifications.

Silverado Crew Cab LTZ interior in Light Titanium/Dark Titanium colors with available features.



The power, side-sliding rear window is available on Extended Cab and Crew Cab LT and LTZ. Shown with available dealer-installed Chevy Accessories.



Large, full-drop, power rear side windows lower completely into the rear doors at the touch of a button. Standard on Extended Cab LT and LTZ.



Cavernous storage areas for front-seat passengers are found on LT and LTZ. Shown above is the lockable underseat storage space on LT that boasts a 12-volt electrical outlet.





Stay connected – even when you’re on the road. Available **Bluetooth® wireless technology**¹ for select phones lets you make, answer and end calls without ever taking your hands off the wheel. **XM Radio**² with three trial months is standard on most models and features live sports play-by-play, many commercial-free music channels and more. To further customize your driving tunes, plug your iPod^{®3} or even a music-loaded flash drive directly into an available **USB port**⁴. Then it’s easy to manage your playlists through the stereo controls. It even charges your iPod for you.



What’s the perfect accessory for a family on the go or those who use their Silverado as a second office? Chevrolet Wi-Fi by Autonet Mobile.⁵ This available, dealer-installed GM officially licensed accessory delivers reliable Internet access inside the vehicle and within a 150-foot radius around the vehicle, allowing passengers to connect with friends on social sites, stream videos on long trips and more. For work site use, the Wi-Fi connection offers immediate access to everything the Web offers to make the job quicker and easier – from access to online ordering sites to municipal sites with permit and building code information and more. The Internet connection can support several devices at once, enabling multiple passengers and multiple devices to use the connection.



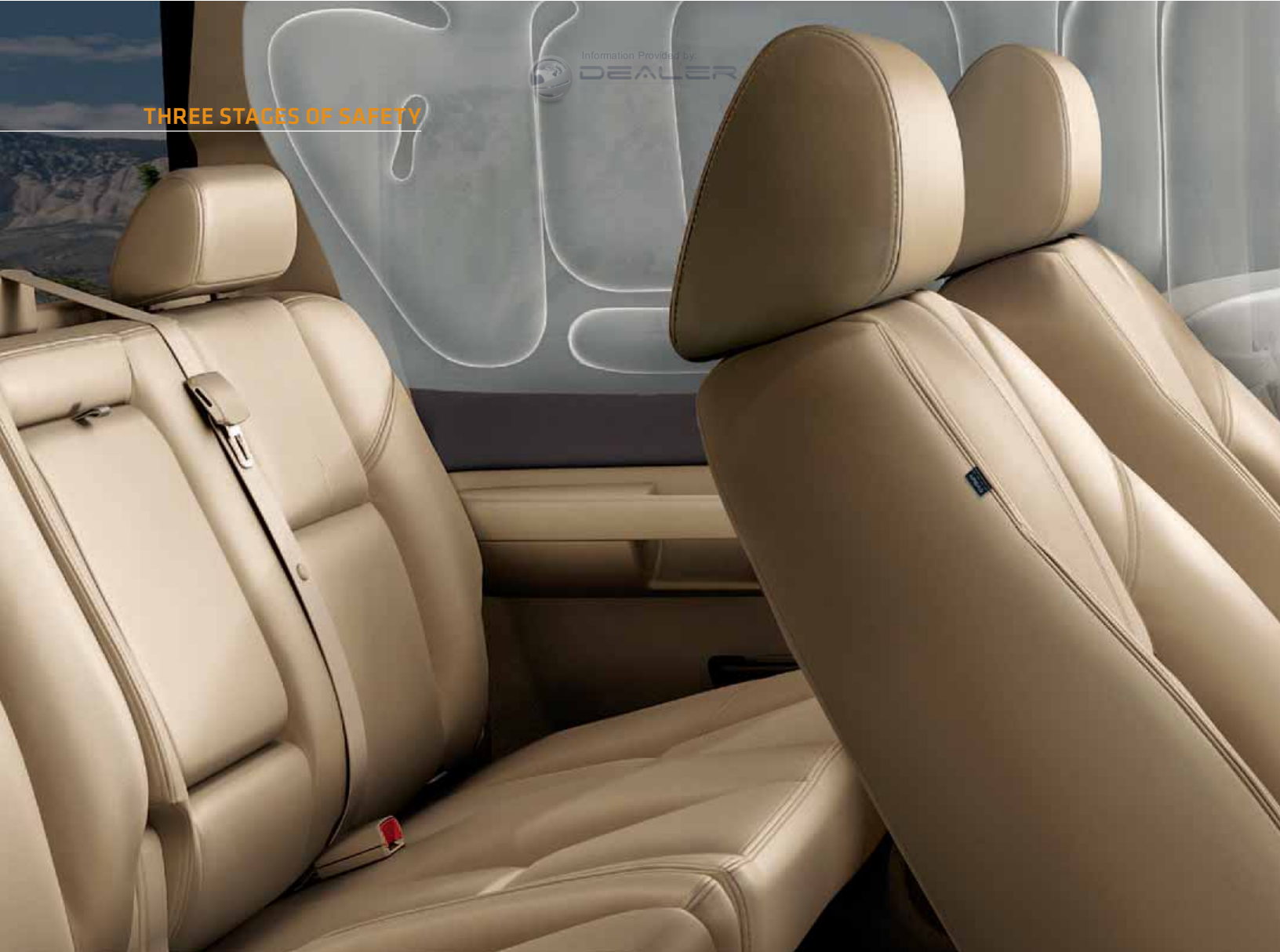
OnStar^{®6} with the Directions & Connections[®] Plan (standard on most models for the first six months) includes vehicle diagnostics. Each month, your vehicle automatically runs hundreds of diagnostic checks of its key operating systems (e.g., engine, transmission, emissions, ABS, air bags, oil life and tire pressure) and sends you an easy-to-read email summary. This helps deliver the confidence that your vehicle is ready to go and keeps you apprised of maintenance needs.



Also included is Turn-by-Turn Navigation, which offers you a real, live Advisor to help with directions – even if you don’t know the full address. Simply push the OnStar button and an Advisor will download directions to your vehicle. An automated voice calls out every turn as you need it, and upcoming turns and street names are displayed on the radio or navigation radio, if equipped.

XM XM NavTraffic⁷ enhances your vehicle’s available navigation system by showing real-time traffic data when you need it most – while you’re driving. It can alert you to construction and accidents to help keep you moving. Available on LT and LTZ models.

Silverado LT instrument panel in Light Cashmere/Ebony colors with available features. ¹ Go to gm.com/bluetooth to find out which phones are compatible with the vehicle. ² Requires a subscription sold separately by XM after trial period. Available only in the 48 contiguous United States and District of Columbia. Visit gm.xmradio.com for details. ³ iPod is a mobile digital device. iPod is a registered trademark of Apple, Inc. All rights reserved. ⁴ Not compatible with all devices. ⁵ Monthly rates apply. Visit autonetmobile.com for details and coverage map. ⁶ Visit onstar.com for coverage map, details and system limitations. Services vary by model and conditions. ⁷ Requires available navigation radio. Requires a subscription sold separately by XM after trial period. Available only in select markets. For more information, see xmradio.com/navtraffic.



THREE STAGES OF SAFETY

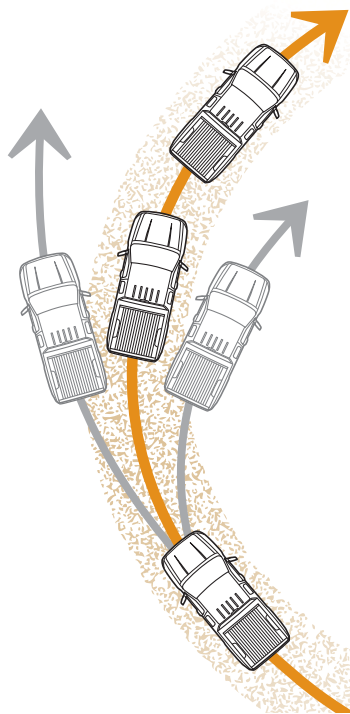
There are three stages of safety. Silverado takes every one as seriously as you do.

Before. **StabiliTrak Electronic Stability Control System** with Traction Control helps keep you on the road and in control. Four-wheel antilock disc brakes are standard and deliver consistent stopping power, even when you're hauling big loads. A Tire Pressure Monitor keeps a constant watch on the inflation level of the four road tires.

During. **Six air bags¹ are standard:** driver and right-front passenger dual-stage frontal air bags, head-curtain side-impact air bags for the front and rear outboard seating positions, and front-seat mounted air bags for thorax and pelvic protection. You're also surrounded by a high-strength steel safety cage and strategically placed crush zones to help absorb any impact.

After. Protected and Connected with OnStar.[®] Experience the safe, simple way to stay connected on the road. **OnStar², including Automatic Crash Response,** is standard on most models for the first six months. In a collision, vehicle sensors can automatically alert an OnStar Advisor and relay critical crash details. The Advisor is immediately connected into your vehicle and can request that emergency help be sent to your exact GPS location, even if you can't respond.

Silverado Crew Cab LTZ interior in Light Cashmere/Dark Cashmere colors with available features. ¹ Air bag inflation can cause severe injury or death to anyone too close to the bag when it deploys. Be sure every occupant is properly restrained. ² Visit onstar.com for coverage map, details and system limitations. Services vary by model and conditions.



STABILITRAK

- The StabiliTrak control module compares your steering input with the vehicle's actual response and then, if necessary, makes small, individual brake applications to keep you on track.
- It automatically intervenes when it senses understeer (plowing), oversteer (fishtailing) or loss of lateral traction.
- In these situations, the system applies brake pressure and, if necessary, adjusts engine torque to help the driver get the vehicle back on track.

It takes a lot of hard work to build change. Since a Chevy has never shied away from hard work, that’s not really a bad thing. Silverado continues to bring drivers fuel efficiency they just can’t get with any other full-size pickup,¹ including our XFE that offers better fuel economy than Ford F-150, Dodge Ram and Toyota Tundra – an EPA estimated 15 MPG city, 22 highway. Or you can choose the available Vortec 5.3L V8 engine with Active Fuel Management technology that helps Silverado offer an EPA estimated 21 MPG highway.

Then there’s Silverado Hybrid² – **America’s first Two-Mode Hybrid full-size pickup** – offering an EPA estimated 20 MPG city, 23 highway. That’s **better city fuel economy than a six-cylinder Honda Accord.**³ And because it’s a Chevy Truck, Silverado Hybrid has the power and performance you demand: 332 horsepower, 367 lb.-ft. of torque, up to 6,100 lbs. of towing capacity (2WD)⁴ and a payload capacity of up to 1,553 lbs. (2WD)⁵

FUEL ECONOMY	EPA EST. CITY/ HWY. MPG
2011 CHEVROLET SILVERADO XFE 5.3L V8	15/22
2011 CHEVROLET SILVERADO HYBRID 6.0L V8	20/23
2011 CHEVROLET SILVERADO 5.3L V8	15/21
2010 TOYOTA TUNDRA 4.6L V8	15/20
2010 FORD F-150 4.6L V8	15/21
2010 FORD F-150 5.4L V8	14/20
2010 DODGE RAM 5.7L V8	14/20
2010 DODGE RAM 3.7L V6	14/20



XFE ENHANCEMENTS

Silverado XFE is designed specifically to improve MPG, with features that include an aluminum block Vortec 5.3L V8 engine, aluminum wheels and soft tonneau cover.

Shown at right: Silverado Hybrid Crew Cab Short Box 4x4 in Sheer Silver Metallic. Shown above: Silverado Crew Cab Short Box XFE in Sheer Silver Metallic with available features. 1 Based on GM Large Pickup segment and Silverado Hybrid (limited availability) that has an EPA estimated 20 MPG city, 23 highway; and Silverado XFE that has an EPA estimated 15 MPG city, 22 highway. 2 Limited availability. 3 EPA estimated MPG city: Silverado Hybrid 20, Accord 19. 4 Maximum trailer weight ratings are calculated assuming a base vehicle, except for any option(s) necessary to achieve the rating, plus driver. The weight of other optional equipment, passengers and cargo will reduce the maximum trailer weight your vehicle can tow. See your Chevy dealer for additional details. 5 Maximum payload capacity includes weight of driver, passengers, optional equipment and cargo.







Sunup to sundown is a good start. Not surprising when you consider it's from Chevy – the most dependable, longest-lasting full-size pickups on the road¹ Supporting that heritage is a **stiff frame** that's perfect for long hours of hauling. **Vortec engines** supply the all-day muscle, including a 4.3L V6 that makes select models the **most fuel-efficient full-size six-cylinder pickups**² Every Silverado carries a stamped pickup box that includes stake pockets, two-tier loading capability, and four cargo tie-downs for convenience and utility. Lower or remove the tailgate for longer loads.

Even the **interiors are custom-made for workers**, with large grab handles and controls that can be operated with gloved hands. There are also big cup holders, as well as air conditioning to cool things down and a front seat that offers 6.1 liters of space in the fold-down center armrest compartment.



DUAL GLOVE BOXES

These two convenient areas provide nearly 9 liters of combined cargo space. Standard in WT, LS and LT.

Silverado Extended Cab Standard Box LT in Blue Granite Metallic with available features and dealer-installed Chevy Accessories. ¹ Dependability based on longevity: 1981–July 2009 full-size pickup registrations. ² Based on GM Large Pickup segment and Silverado 2WD that has an EPA estimated 15 MPG city, 20 highway. ³ Cargo and load capacity limited by weight and distribution.



CARGO MANAGEMENT SYSTEM

The available dealer-installed Cargo Management System available from Chevy Accessories utilizes sliding hooks embedded in C-channel tracks that run along both sides and the front of the pickup box. Each anchor in this integrated, configurable system is rated for up to 500 lbs.³ and can be fitted with available Chevy Accessories such as side storage boxes.





Information Provided by
DEALER
STPROCESS



Every Chevy Accessory is covered by the GM 3-year/36,000-mile (whichever comes first) New Vehicle Limited Warranty when ordered with your vehicle. See your dealer or visit chevy.com/silverado for details and a closer look at more available accessories.

Shown at left: Silverado Crew Cab Short Box LTZ 4x4 in Taupe Gray Metallic with available dealer-installed 20" six-spoke chrome wheels; chrome grille and recovery hooks, and 6" oval chrome side steps from Chevy Accessories. ¹ Use only GM-approved tire and wheel combinations. Unapproved combinations may change the vehicle's performance characteristics. For important tire and wheel information, go to gmaccessorieszone.com or see your dealer for details.



Lockable sliding tool box



Chrome mirror caps



Rear underseat storage box



Soft tonneau cover



Hard, body-color tonneau cover



Bedliner and tailgate liner



Tubular bed rails



3" chrome assist steps



20" 12-spoke aluminum wheel¹



22" 12-spoke aluminum wheel¹



20" 12-spoke aluminum wheel¹



20" 8-spoke aluminum wheel¹



INTERIOR AND EXTERIOR COLORS



Imperial Blue Metallic



Victory Red



Steel Green Metallic



Blue Granite Metallic



Black



Summit White



Sheer Silver Metallic

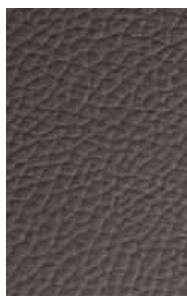


Taupe Gray Metallic



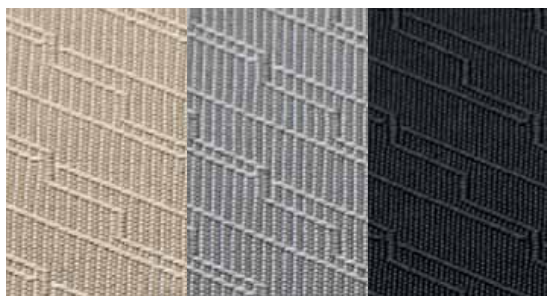
Silverado 1500 Extended Cab LT interior in Light Cashmere color with available features.

VINYL



Dark Titanium color (standard on WT)

PREMIUM CLOTH



Light Cashmere color (standard on LT, XFE and 1HY)

Light Titanium color (standard on LT, XFE and 1HY)

Ebony (standard on LS, LT and XFE; available on WT)

LEATHER APPOINTMENTS



Light Cashmere color (standard on LTZ and 2HY; available on LT)

Light Titanium color (standard on LTZ and 2HY; available on LT)

Ebony (standard on LTZ and 2HY; available on LT)

WHEELS



17" Steel

17" Chrome Styled-Steel

18" Chrome-Clad
Aluminum



20" Chrome Clad Aluminum¹

18" Aluminum

17" Aluminum

SILVERADO REGULAR CAB BUYER'S GUIDE

S = Standard O = Optional – = Not Available Fleet and government order content varies. See your dealer for details.

EXTERIOR

	WT	LT
Bumper: – front, Black	S	–
– front, chrome; with body-color end caps	O ¹	S
– rear, chrome; step-style with pad	S	S
Chrome Essentials Package: polished exhaust tip; chrome recovery hooks, door handles and mirror caps; 18" chrome-clad aluminum wheels; and chrome tubular assist steps (Standard Box only)	–	O ²
Door handles: Black	S	S
Grille: – Black surround	S	–
– chrome surround	O ¹	S
LS Package: 17" chrome styled-steel wheels, chrome surround grille and chrome front bumper with body-color end caps	O	–
Mirrors: – Black, folding	S	–
– Black, folding, power, heated	–	S
– Black, trailering, high-visibility vertical, manual-folding and extendable, with lower convex spotter glass	O	–
– Black, trailering, vertical, power, heated, manual-folding and extendable, with turn-signal indicators and lower convex spotter glass	–	O ³
Recovery hooks: two front (4x4)	S	S

ENGINES/CHASSIS

Differential: automatic locking rear	O	O
Engine block heater	O	O
Fuel capacities (approximate): – Standard Box models (26-gallon)	S	S
– Long Box models (34-gallon)	S	S
Oil coolers: – engine, heavy-duty, external	O ⁴	O ⁵
– transmission, auxiliary, heavy-duty, external	O ⁶	O ⁷
Skid Plate Package: ⁸ frame-mounted shield protecting front underbody, oil pan, differential case and transfer case (4x4)	O	O
Snow Plow Prep Package: ⁹ 10-amp power for backup and roof emergency light, 160-amp alternator, high-flow front bumper, forward lamp wiring harness, provision for cab roof-mounted lamp beacon, instrument panel jumper wiring harness for electric trailer brake controller, high-capacity air cleaner, auxiliary external transmission oil cooler and Skid Plate Package	O	O
Steering: power, rack-and-pinion	S	S
Suspension, front: independent, coil-over-shock	S	S
Suspension, rear: two-stage, multi-leaf springs, semi-elliptical	S	S
Suspensions: – Z83 Solid Smooth Ride	S	–
– Z85 Handling/Trailering	O	S
– Z71 Off-Road	–	O ¹⁰
Trailering Package: trailer hitch platform, 7-wire harness mated to 7-way sealed connector, trailer brake control jumper harness under dash, external transmission oil cooler and automatic locking rear differential ¹¹	O ¹²	O
Transfer cases (4x4 only): – floor-mounted, manual shift-on-the-fly	S	–
– Autotrac, active	–	S
Z71 Off-Road Package: Skid Plate Package; off-road jounce bumpers, shock absorbers and stabilizer bars; high-capacity air cleaner; and Z71 decals	–	O ¹⁰

SEATING

	WT	LT
Vinyl 40/20/40 split-bench front seat with recliners and fold-down center armrest with storage	S	–
Cloth 40/20/40 split-bench front seat with recliners and fold-down center armrest with storage	O	–
Premium Cloth 40/20/40 split-bench front seat with recliners, fold-down center armrest with storage and lockable underseat storage	–	S

INTERIOR

Bluetooth [®] wireless technology ¹³ for select phones	O ¹⁴	O ¹⁵
Climate (temperature) control: single-zone, manual	S	S
Defogger: rear-window	O	O
Door locks: power, with Remote Keyless Entry	O	S
Driver Information Center (DIC) display	S	S
DIC controls	O ¹⁶	O ¹⁵
Glove boxes: dual	S	S
Interior Plus Package: six-way power-adjustable driver seat, USB port, ¹⁷ steering wheel-mounted audio controls, Bluetooth [®] wireless technology ¹³ for select phones, dual-zone automatic temperature controls, EZ Lift locking tailgate and foglamps	–	O
Steering column: Tilt-Wheel, adjustable	S	S
Steering wheel-mounted audio and cruise controls	O ¹⁶	O ¹⁵
Windows: power	–	S

SAFETY AND SECURITY

Air bags: ¹⁸ – driver and right-front passenger with Passenger Sensing System	S	S
– head-curtain with rollover sensor	S	S
– seat-mounted for thorax and pelvic protection	S	S
Brake controller: trailer, ABS-integrated ¹⁹	O	O
Brakes: four-wheel antilock (ABS)	S	S
OnStar: ²⁰ with Directions & Connections Plan for the first six months	O	S
StabiliTrak Electronic Stability Control System	S	S

AUDIO SYSTEMS

AM/FM stereo	S	–
AM/FM stereo with CD/MP3 player	O	S
AM/FM stereo with CD/MP3 player and USB port ¹⁷	–	O ¹⁵
AM/FM stereo with in-dash six-disc CD/MP3 changer and USB port ¹⁷	–	O ¹⁵
XM Radio: ²¹ with three trial months	O ¹⁴	S

WHEELS

17" steel	S	–
17" chrome styled-steel	O ¹	S
17" aluminum	–	O ²²
18" chrome-clad aluminum	–	O ²³
18" aluminum	–	O ²²
20" chrome-clad aluminum ²⁴	–	O ²⁵

PICKUP MODEL	SERIES	DRIVE	TRIM LEVELS	STANDARD ENGINE	HP@RPM	TORQUE @ RPM	STANDARD TRANSMISSION	OPTIONAL ENGINES	GVWR ²⁶ (LBS.)	MAX. PAYLOAD ²⁷ (LBS.)
REGULAR CAB STANDARD BOX	1500 (1/2-ton)	2WD/4x4	Work Truck	Vortec 4.3L V6	195 @ 4600	260 @ 2800	Hydra-Matic 4-speed automatic overdrive	Vortec 4.8L V8, Vortec 5.3L V8	6,400	1,937 (2WD) 1,693 (4x4)
		2WD/4x4	LT	Vortec 4.8L V8	302 @ 5600	305 @ 4600	Hydra-Matic 4-speed automatic overdrive	Vortec 5.3L V8	6,400	1,815 (2WD) 1,566 (4x4)
REGULAR CAB LONG BOX	1500 (1/2-ton)	2WD/4x4	Work Truck	Vortec 4.3L V6	195 @ 4600	260 @ 2800	Hydra-Matic 4-speed automatic overdrive	Vortec 4.8L V8, Vortec 5.3L V8	6,400	1,806 (2WD) 1,815 (4x4)
		2WD/4x4	LT	Vortec 4.8L V8	302 @ 5600	305 @ 4600	Hydra-Matic 4-speed automatic overdrive	Vortec 5.3L V8	6,400 (2WD) 6,800 (4x4)	1,684 (2WD) 1,815 (4x4)

1 Requires available LS Package. 2 Not available with Z71 Off-Road Package or heated camper mirrors. 3 Requires available auto-dimming inside rearview mirror or auto-dimming inside rearview mirror with rear camera display. 4 Requires available Trailing Package or Heavy-Duty Cooling Package. 5 Requires available six-speed automatic transmission. 6 Requires available Trailing Package, Snow Plow Prep Package or Heavy-Duty Cooling Package. 7 Requires available Trailing Package, Snow Plow Prep Package or six-speed automatic transmission. 8 Included with available Z71 Off-Road Package and Snow Plow Prep Package. 2WD models require available Z71 Off-Road Package. 9 Not available with Vortec 4.3L V6 engine. 10 Requires available Trailing Package and Vortec 5.3L V8 engine. 11 Automatic locking rear differential not included on fleet orders. 12 Not available with Vortec 4.3L V6 engine or Z83 Solid Smooth Ride suspension. 13 Go to gm.com/bluetooth to find out which phones are compatible with the vehicle. 14 Requires available OnStar and AM/FM stereo with CD/MP3 player. 15 Requires available Interior Plus Package. 16 Requires available Bluetooth wireless technology. 17 Not compatible with all devices. 18 Always use safety belts and the correct restraint for your child's age and size. Even in vehicles equipped with the Passenger Sensing System, children are safer when properly secured in a rear seat in the appropriate infant, child or booster seat. Never place a rear-facing infant restraint in the front seat of any vehicle equipped with a passenger air bag. See the Owner's Manual and child safety seat instructions for more information. 19 Requires available Trailing Package. Not available with Vortec 4.3L V6 engine. 20 Visit onstar.com for coverage map, details and system limitations. Services vary by model and conditions. 21 Requires a subscription sold separately by XM after trial period. Available only in the 48 contiguous United States and District of Columbia. Visit gm.xmradio.com for details. 22 Requires available Z71 Off-Road Package. 23 Requires available Chrome Essentials Package. 24 Use only GM-approved tire and wheel combinations. Unapproved combinations may change the vehicle's performance characteristics. For important tire and wheel information, go to gmaccessorieszone.com or see your dealer for details. 25 Not available with Z71 Off-Road Package, Snow Plow Prep Package or Long Box models. 26 Gross Vehicle Weight Rating (GVWR). When properly equipped; includes vehicle, passengers, cargo and equipment. 27 Maximum payload capacity includes weight of driver, passengers, optional equipment and cargo. Cargo and load capacity limited by weight and distribution.



A



B

DIMENSIONS

A = 79.9"

B = 79.9"

C = 73.5" to 73.9"
(depending on model and
tire size selected)

D = 119.0" Standard Box,
133.0" Long Box

E = 205.6" Standard Box,
224.5" Long Box

F = 50.6"

G = 62.4"

H = 116.5"

I = 78.9" Standard Box,
97.8" Long Box



D

E

C



H

I

F

G

SILVERADO EXTENDED CAB BUYER'S GUIDE

S = Standard O = Optional – = Not Available Fleet and government order content varies. See your dealer for details.

EXTERIOR

	WT	LS	LT	LTZ
Bumper: – front, Black	S	–	–	–
– front, chrome; with body-color end caps	O ¹	S	S	–
– front, body-color	–	–	–	S
– rear, chrome; step-style with pad	S	S	S	S
Chrome Essentials Package: polished exhaust tip; chrome recovery hooks, door handles and mirror caps; 18" chrome-clad aluminum wheels; and chrome tubular assist steps (Standard Box only)	–	–	O ²	O ²
Door handles: – Black	S	S	S	–
– body-color	–	–	–	S
Foglamps: halogen	–	–	O ³	S
Grille: – Black surround	S	–	–	–
– chrome surround	O ¹	S	S	S
LS Package: 17" chrome styled-steel wheels, chrome surround grille and chrome front bumper with body-color end caps	O	–	–	–
LTZ Plus Package: EZ Lift locking tailgate, Universal Home Remote transmitter, rear wheelhousing liner, Ultrasonic Rear Parking Assist and power-adjustable pedals	–	–	–	O
Mirrors: – Black, folding	S	–	–	–
– Black, folding, power, heated	–	S	S	–
– body-color, power, heated, with turn-signal indicators in glass, driver-side auto-dimming feature and power-folding feature	–	–	–	S
– Black, trailering, high-visibility vertical, manual-folding and extendable, with lower convex spotter glass	O	–	–	–
– Black, trailering, vertical, power, heated, manual-folding and extendable, with turn-signal indicators and lower convex spotter glass	–	–	O ⁴	O
Recovery hooks: two front (4x4)	O	O	O	O
Ultrasonic Rear Parking Assist	–	–	O ⁵	O ⁶

ENGINES/CHASSIS

All-Star Edition: Vortec 5.3L V8, automatic locking rear differential, Trailing Package, 17" aluminum wheels, dual-zone automatic climate controls, Bluetooth [®] wireless technology ⁷ for select phones, CD/MP3 player and USB port, ⁸ steering wheel-mounted audio controls, six-way power-adjustable driver seat, foglamps and EZ Lift locking tailgate	–	–	O	–
Differential: automatic locking rear	O	O	O	S
Engine block heater	O	O	O	O
MAX Trailing Pack: ⁹ Vortec 6.2L V8, automatic locking rear differential, 9.5" rear axle, front/rear disc brakes, 3.73 rear axle ratio, 17" aluminum wheels, foglamps, front and rear disc brakes, Z85 Handling/Trailing suspension and Trailing Package (Standard Box only)	–	–	O	O
Oil coolers: – engine, heavy-duty, external	O ¹⁰	–	O ¹¹	S
– transmission, auxiliary, heavy-duty, external	O ¹²	O ¹³	O ¹³	S
Skid Plate Package: ¹⁴ frame-mounted shield protecting front underbody, oil pan, differential case and transfer case (4x4)	O	O	O	O
Steering: power, rack-and-pinion	S	S	S	S
Suspension, front: independent, coil-over-shock	S	S	S	S
Suspension, rear: two-stage, multi-leaf springs, semi-elliptical	S	S	S	S
Suspensions: – Z83 Solid Smooth Ride	S	–	–	–
– Z85 Handling/Trailing	O	S	S	S
– Z60 High-Performance ¹⁵	–	–	O	O
– Z71 Off-Road	–	–	O ¹⁶	O
Trailing Package: trailer hitch platform, 7-wire harness mated to 7-way sealed connector, trailer brake control jumper harness under dash, external transmission oil cooler and automatic locking rear differential ¹⁷	O ¹⁸	O	O	S
Transfer cases (4x4 only): – floor-mounted, manual shift-on-the-fly	S	S	–	–
– Autotrac, active	–	–	S	S
Z71 Off-Road Package: Skid Plate Package; off-road jounce bumpers, shock absorbers and stabilizer bars; high-capacity air cleaner; and Z71 decals	–	–	O ¹⁶	O
Z71 Appearance Package: 18" aluminum wheels; foglamps; body-color outside mirrors and door handles; unique Z71 decals, instrument cluster, body-color grille with chrome insert and sill plates; Rancho [®] shocks; and chrome recovery hooks (Standard Box only)	–	–	O ¹⁹	O ¹⁹

SEATING

	WT	LS	LT	LTZ
Cloth 40/20/40 split-bench front seat with recliners and fold-down center armrest with storage	O	S	–	–
Premium Cloth 40/20/40 split-bench front seat with recliners, fold-down center armrest with storage and lockable underseat storage (also available with Custom Leather-appointed trim)	–	–	S	–
Premium Cloth, reclining, six-way power-adjustable front bucket seats (also available with Custom Leather-appointed trim)	–	–	O	–
Custom Leather-appointed, reclining, heated, 10-way power-adjustable front bucket seats with memory	–	–	–	S
Rear seat: – flip-up, full-width bench	S	–	–	–
– flip-up, 60/40 split-bench	–	S	S	S

INTERIOR

Bluetooth [®] wireless technology ⁷ for select phones	O ²⁰	O	O ²¹	S
Climate (temperature) control: single-zone, manual	S	S	S	–
Climate (temperature) controls: dual-zone, automatic	–	–	O ²¹	S
Convenience Package: power-adjustable pedals, Ultrasonic Rear Parking Assist, rear-window defogger, Universal Home Remote and remote vehicle starter system	–	–	O	–
Defogger: rear-window ²²	O	O	O	S
Door locks: power; with Remote Keyless Entry	O	S	S	S
Glove boxes: dual	S	S	S	–
Interior Plus Package: six-way power-adjustable driver seat, USB port, ⁸ steering wheel-mounted audio controls, Bluetooth [®] wireless technology ⁷ for select phones, dual-zone automatic temperature controls, EZ Lift locking tailgate and foglamps	–	–	O ²³	–
Mirror, inside rearview: auto-dimming	–	–	O ²⁴	S
Rearview camera system (with display in rearview mirror or nav screen)	–	–	O ²⁵	O ⁶
Remote vehicle starter system	–	–	O ⁵	S
Sunroof: power-sliding, with Express-Open feature	–	–	–	O
Window: power-sliding, rear ²⁶	–	–	O	O
Window: power, rear access doors	–	–	S	S
Windows: power, full-drop	–	S	S	S

SAFETY AND SECURITY

Air bags: ²⁷ – driver and right-front passenger with Passenger Sensing System	S	S	S	S
– front and rear head-curtain with rollover sensor	S	S	S	S
– front seat-mounted for thorax and pelvic protection	S	S	S	S
Brake controller: trailer, ABS-integrated ²⁸	O	O	O	O
Brakes: four-wheel antilock (ABS)	S	S	S	S
OnStar: ²⁹ with Directions & Connections Plan for the first six months	O	S	S	S
StabiliTrak Electronic Stability Control System	S	S	S	S

AUDIO SYSTEMS

AM/FM stereo	S	–	–	–
AM/FM stereo with CD/MP3 player	O	S	S	–
AM/FM stereo with CD/MP3 player and USB port ⁸	–	–	O ²¹	S
AM/FM stereo with in-dash six-disc CD/MP3 changer and USB port ⁸	–	–	O ²¹	O
Bose [®] sound system	–	–	O ³⁰	S
Touch-screen navigation radio ³¹	–	–	O ³²	O
XM Radio: ³³ with three trial months	O ²⁰	S	S	S
XM NavTraffic: ³⁴ with three trial months	–	–	O	O

WHEELS

17" steel	S	–	–	–
17" chrome styled-steel	O ¹	S	S	–
17" aluminum	–	–	O ³⁵	O ³⁶
18" chrome-clad aluminum	–	–	O ³⁷	S
18" aluminum	–	–	O ¹⁹	O ¹⁹
20" chrome-clad aluminum ³⁸	–	–	O ³⁹	O ³⁹

PICKUP MODEL	SERIES	DRIVE	TRIM LEVELS	STANDARD ENGINE	HP @ RPM	TORQUE @ RPM	STANDARD TRANSMISSION	OPTIONAL ENGINES	GVWR ⁴⁰ (LBS.)	MAX. PAYLOAD ⁴¹ (LBS.)
EXTENDED CAB STANDARD BOX	1500 (1/2-ton)	2WD	Work Truck	Vortec 4.3L V6	195 @ 4600	260 @ 2800	Hydra-Matic 4-speed automatic overdrive	Vortec 4.8L V8, Vortec 5.3L V8	6,400	1,659
		4x4	Work Truck	Vortec 4.8L V8	302 @ 5600	305 @ 4600	Hydra-Matic 4-speed automatic overdrive	Vortec 5.3L V8	7,000	1,788
	MAX Trailering Pack	2WD/4x4	LS, LT	Vortec 4.8L V8	302 @ 5600	305 @ 4600	Hydra-Matic 4-speed automatic overdrive	Vortec 5.3L V8 (LT), Vortec 6.2L V8 (LT)	6,800 (2WD), 7,000 (4x4)	1,759 (2WD), 1,730(LS)/1,788(LT) (4x4)
		2WD/4x4	LTZ	Vortec 5.3L V8	315 @ 5200 326 @ 5300 ⁴²	335 @ 4000 348 @ 4400 ⁴²	Hydra-Matic 6-speed automatic overdrive	Vortec 6.2L V8	6,800 (2WD), 7,000 (4x4)	1,732 (2WD), 1,788 (4x4)
		2WD/4x4	LT, LTZ	Vortec 6.2L V8	403 @ 5700	417 @ 4300	Hydra-Matic 6-speed automatic overdrive	—	7,000 (2WD), 7,200 (4x4)	1,925 (2WD), 1,879 (4x4)
EXTENDED CAB LONG BOX	1500 (1/2-ton)	2WD/4x4	Work Truck, LT, LTZ	Vortec 5.3L V8	315 @ 5200 326 @ 5300 ⁴²	335 @ 4000 348 @ 4400 ⁴²	Hydra-Matic 4-speed automatic overdrive	—	6,900 (2WD), 7,000 (4x4)	1,656 (2WD), 1,512 (4x4)

1 Requires available LS Package. **2** Not available with Z71 Off-Road Package, MAX Trailering Pack or heated camper mirrors. Requires available All-Star Edition. **3** Requires available All-Star Edition, Z71 Appearance Package, Interior Plus Package or MAX Trailering Pack. **4** Requires available auto-dimming inside rearview mirror or auto-dimming inside rearview mirror with rear camera display. **5** Requires available Convenience Package. **6** Requires available LTZ Plus Package. **7** Go to gm.com/bluetooth to find out which phones are compatible with the vehicle. **8** Not compatible with all devices. **9** Not available with Z71 Off-Road Package. **10** Requires available Trailering Package or Heavy-Duty Cooling Package. **11** Requires available six-speed automatic transmission. **12** Requires available Trailering Package, Snow Plow Prep Package or Heavy-Duty Cooling Package. **13** Requires available Trailering Package, Snow Plow Prep Package or six-speed automatic transmission. **14** Included with available Z71 Off-Road Package. 2WD models require available Z71 Off-Road Package. **15** Requires available 20" chrome-clad wheels. Use only GM-approved wheel and tire combinations. **16** Not available with Vortec 4.8L engine. **17** Automatic locking rear differential not included on fleet orders. **18** Not available with Vortec 4.3L V6 engine or Solid Smooth Ride suspension. **19** Requires available Z71 Off-Road Package. **20** Requires available OnStar and AM/FM stereo with CD/MP3 player. **21** Requires available Interior Plus Package or All-Star Edition. **22** Not available with power-sliding rear window. **23** Not available with All-Star Edition. **24** Requires available rearview camera system or heated camper mirrors. **25** Requires available Interior Plus Package or All-Star Edition and Convenience Package. **26** Not available with rear-window defogger. **27** Always use safety belts and the correct restraint for your child's age and size. Even in vehicles equipped with the Passenger Sensing System, children are safer when properly secured in a rear seat in the appropriate infant, child or booster seat. Never place a rear-facing infant restraint in the front seat of any vehicle equipped with a passenger air bag. See the Owner's Manual and child safety seat instructions for more safety information. **28** Requires available Trailering Package. **29** Visit onstar.com for coverage map, details and system limitations. Services vary by model and conditions. **30** Requires available front bucket seats. **31** Map coverage excludes Puerto Rico, the Virgin Islands and portions of Canada. **32** Requires available front bucket seats and Interior Plus Package or All-Star Edition. **33** Requires a subscription sold separately by XM after trial period. Available only in the 48 contiguous United States and District of Columbia. Visit gm.xmradio.com for details. **34** Requires available navigation radio. Requires a subscription sold separately by XM after trial period. Available only in select markets. For more information, see xmradio.com/navtraffic. **35** Requires available Z71 Off-Road Package, MAX Trailering Pack or All-Star Edition. **36** Requires available MAX Trailering Pack. **37** Requires available Chrome Essentials Package. **38** Use only GM-approved tire and wheel combinations. Unapproved combinations may change the vehicle's performance characteristics. For important tire and wheel information, go to gmaccessorieszone.com or see your dealer for details. **39** Not available with Z71 Off-Road Package or Long Box models. **40** Gross Vehicle Weight Rating (GVWR). When properly equipped; includes vehicle, passengers, cargo and equipment. **41** Maximum payload capacity includes weight of driver, passengers, optional equipment and cargo. Cargo and load capacity limited by weight and distribution. **42** When running on EBS.



DIMENSIONS

- A = 79.9"
- B = 79.9"
- C = 73.5" to 73.9"
(depending on model and tire size selected)
- D = 143.5" Standard Box,
157.5" Long Box
- E = 230.2" Standard Box,
249.2" Long Box
- F = 50.6"
- G = 62.4"
- H = 141.1"
- I = 78.9" Standard Box,
97.8" Long Box



SILVERADO CREW CAB BUYER'S GUIDE

S = Standard O = Optional – = Not Available Fleet and government order content varies. See your dealer for details.

EXTERIOR	HYBRID ¹							
	WT	LS	LT	XFE	LTZ	1HY	2HY	
Bumper: – front, Black	S	–	–	–	–	–	–	–
– front, chrome; with body-color end caps	O ²	S	S	S	–	S	S	S
– front, body-color	–	–	–	–	–	S	–	–
– rear, chrome; step-style with pad	S	S	S	S	S	S	S	S
Chrome Essentials Package: polished exhaust tip; chrome recovery hooks, door handles and mirror caps; 18" chrome-clad aluminum wheels; and chrome tubular assist steps	–	–	O ³	–	O ³	–	–	–
Door handles: – Black	S	S	S	S	–	S	S	S
– body-color	–	–	–	–	S	–	–	–
Foglamps: halogen	–	–	O ⁴	O ⁵	S	–	S	–
Grille: – Black surround	S	–	–	–	–	–	–	–
– chrome surround	O ²	S	S	S	S	S	S	S
LTZ Plus Package: EZ Lift locking tailgate, Universal Home Remote transmitter, rear wheelhousing liner, Ultrasonic	–	–	–	–	–	–	–	–
Rear Parking Assist and power-adjustable pedals	–	–	–	–	O	–	–	–
Mirrors: – Black, folding	S	–	–	–	–	–	–	–
– Black, folding, power, heated	–	S	S	S	–	S	–	–
– body-color, power, heated, with turn-signal indicators in glass, driver-side auto-dimming feature and power-folding feature	–	–	–	–	S	–	S	–
– Black, trailering, vertical, power, heated, manual-folding and extendable, with turn-signal indicators and lower convex spotter glass	–	–	O ⁶	O ⁶	O	–	–	–
Recovery hooks: two front (4x4)	S	S	S	–	S	S	S	S
Ultrasonic Rear Parking Assist	–	–	O ⁷	O ⁷	O ⁸	–	S	–

ENGINES/CHASSIS

All-Star Edition: Vortec 5.3L V8, automatic locking rear differential, Trailering Package, 17" aluminum wheels, dual-zone automatic climate controls, Bluetooth ⁹ wireless technology ⁹ for select phones, CD/MP3 player and USB port; ¹⁰ steering wheel-mounted audio controls, six-way power-adjustable driver seat, foglamps and EZ Lift locking tailgate	–	–	O	–	–	–	–	–
Differential: automatic locking rear	O	O	O	S	S	S	S	S
Engine block heater	O	O	O	O	O	–	–	–
MAX Trailering Pack: ¹¹ Vortec 6.2L V8, automatic locking rear differential, 9.5" rear axle, front/rear disc brakes, 3.73 rear axle ratio, 17" aluminum wheels, foglamps, front and rear disc brakes, Z85 Handling/Trailering suspension and Trailering Package	–	–	O	–	O	–	–	–
Oil coolers: – engine, heavy-duty, external	O ¹²	–	O ¹³	S	S	–	–	–
– transmission, auxiliary, heavy-duty, external	O ¹⁴	O ¹⁵	O ¹⁵	S	S	–	–	–
Skid Plate Package: ¹⁶ frame-mounted shield protecting front underbody, oil pan, differential case and transfer case (4x4)	O	O	O	–	O	–	–	–
Steering: power, rack-and-pinion	S	S	S	S	S	S	S	S
Suspension, front: independent, coil-over-shock	S	S	S	S	S	S	S	S
Suspension, rear: two-stage, multi-leaf springs, semi-elliptical	S	S	S	S	S	S	S	S
Suspensions: – Z83 Solid Smooth Ride	S	S	–	–	–	–	–	–
– Z85 Handling/Trailering	O	O ¹⁷	S	S	S	S	S	S
– Z60 High-Performance ¹⁸	–	–	O	–	O	–	–	–
– Z71 Off-Road	–	–	O ¹⁹	–	O	–	–	–
Transfer cases (4x4 only): – floor-mounted, manual shift-on-the-fly	S	S	–	–	–	–	–	–
– Autotrac, active	–	–	S	–	S	S	S	S
Trailering Package: trailer hitch platform, 7-wire harness mated to 7-way sealed connector, trailer brake control jumper harness under dash, external transmission oil cooler and automatic locking rear differential ²⁰	O ²¹	O	O	S	S	S	S	S
Z71 Off-Road Package: Skid Plate Package; off-road jounce bumpers, shock absorbers and stabilizer bars; high-capacity air cleaner; and Z71 decals	–	–	O ¹⁹	–	O	–	–	–
Z71 Appearance Package: 18" aluminum wheels; foglamps; body-color outside mirrors and door handles; unique Z71 decals, instrument cluster, body-color grille with chrome insert, and sill plates; Rancho [®] shocks; and chrome recovery hooks	–	–	O ²²	–	–	–	–	–

SEATING	HYBRID ¹							
	WT	LS	LT	XFE	LTZ	1HY	2HY	
Vinyl 40/20/40 split-bench front seat with recliners and fold-down center armrest with storage	S	–	–	–	–	–	–	–
Cloth 40/20/40 split-bench front seat with recliners and fold-down center armrest with storage	O	S	–	–	–	–	–	–
Premium Cloth 40/20/40 split-bench front seat with recliners, fold-down center armrest with storage and lockable underseat storage (also available with Custom Leather-appointed trim)	–	–	S	S	–	S	–	–
Premium Cloth, reclining, six-way power-adjustable front bucket seats (also available with Custom Leather-appointed trim)	–	–	O	O	–	–	S ²³	–
Custom Leather-appointed, reclining, heated, 10-way power-adjustable front bucket seats with memory	–	–	–	–	S	–	–	–
Rear seat: – flip-up, 60/40 split-bench	S	S	S	S	S	–	–	–
– flip-up, full-width bench	–	–	–	–	–	S	S	–

INTERIOR

Bluetooth ⁹ wireless technology ⁹ for select phones	O ²⁴	O	O ²⁵	O ⁵	S	S	S	S
Climate (temperature) control: single-zone, manual	S	S	S	S	–	–	–	–
Climate (temperature) controls: dual-zone, automatic	–	–	O ²⁵	O ⁵	S	S	S	S
Convenience Package: power-adjustable pedals, Ultrasonic Rear Parking Assist, rear-window defogger, Universal Home Remote and remote vehicle starter system	–	–	O	O	–	–	–	–
Defogger: rear-window ²⁶	O	O	O	S	O	–	S	–
Door locks: power; with Remote Keyless Entry	S	S	S	S	S	S	S	S
Glove boxes: dual	S	S	S	S	–	S	S	–
Interior Plus Package: six-way power-adjustable driver seat, USB port; ¹⁰ steering wheel-mounted audio controls, Bluetooth ⁹ wireless technology ⁹ for select phones and dual-zone automatic temperature controls	–	–	O ²⁷	O ²⁷	–	–	–	–
Mirror, inside rearview: auto-dimming	–	–	O ²⁸	O ²⁸	S	–	S	–
Rearview camera system (with display in rearview mirror or nav screen)	–	–	O ²⁹	O ²⁹	O ⁷	–	O	–
Remote vehicle starter system	–	–	O ⁷	O ⁷	S	–	–	–
Sunroof: power-sliding, with Express-Open feature	–	–	–	–	O	–	O	–
Window: power-sliding, rear ³⁰	–	–	O	O	O	–	–	–
Windows: power, full-drop	–	S	S	S	S	S	S	S

SAFETY AND SECURITY

Air bags: ³¹ – driver and right-front passenger with Passenger Sensing System	S	S	S	S	S	S	S	S
– front and rear head-curtain with rollover sensor	S	S	S	S	S	S	S	S
– front seat-mounted for thorax and pelvic protection	S	S	S	S	S	S	S	S
Brake controller: trailer, ABS-integrated ¹⁷	O	O	O	O	O	O	O	O
Brakes: four-wheel antilock (ABS)	S	S	S	S	S	S	S	S
OnStar: ³² with Directions & Connections Plan for the first six months	O	S	S	S	S	S	S	S
StabiliTrak Electronic Stability Control System	S	S	S	S	S	S	S	S

AUDIO SYSTEMS

AM/FM stereo	S	–	–	–	–	–	–	–
AM/FM stereo with CD/MP3 player	O	S	S	S	–	S	–	–
AM/FM stereo with CD/MP3 player and USB port ¹⁰	–	–	O ²⁵	O ²⁵	S	–	–	–
AM/FM stereo with in-dash six-disc CD/MP3 changer and USB port ¹⁰	–	–	O ²⁵	O ²⁵	O	–	–	–
Bose [®] sound system and rear-seat audio controls	–	–	O ³³	O	S	–	S	–
DVD entertainment system: rear-seat	–	–	–	–	O	–	–	–
Touch-screen navigation radio ³⁴	–	–	O ³⁵	O ³⁶	O	–	S	–
XM Radio: ³⁷ with three trial months	O ²⁴	S	S	S	S	S	S	S
XM NavTraffic: ³⁸ with three trial months	–	–	O	O	O	–	S	–

WHEELS

17" steel	S	–	–	–	–	–	–	–
17" chrome styled-steel	O ²	S	S	–	–	–	–	–
17" aluminum	–	–	O ³⁹	S	O ⁴⁰	–	–	–
18" chrome-clad aluminum	–	–	O ⁴¹	–	S	S	S	S
18" aluminum	–	–	O ²²	–	O ²²	–	–	–
20" chrome-clad aluminum ⁴²	–	–	O ¹	–	O ¹	–	–	–

PICKUP MODEL	SERIES	DRIVE	TRIM LEVELS	STANDARD ENGINE	HP @ RPM	TORQUE @ RPM	STANDARD TRANSMISSION	OPTIONAL ENGINES	GVWR ⁴³ (LBS.)	MAX. PAYLOAD ⁴⁴ (LBS.)
CREW CAB SHORT BOX	1500 (1/2-ton)	2WD/4x4	Work Truck, LS, LT, LTZ	Vortec 4.8L V8 ⁴⁵	302 @ 5600	305 @ 4600	Hydra-Matic 4-speed automatic overdrive	Vortec 5.3L V8 (WT, LT, LTZ), Vortec 6.2L V8 (LT, LTZ)	6,800 (2WD) 7,000 (4x4)	1,705 (2WD) 1,732 (4x4)
	1500 (1/2-ton)	2WD	XFE	Vortec 5.3L V8	315 @ 5200	335 @ 4000	Hydra-Matic 6-speed automatic overdrive	—	6,700	1,663
	1500 (1/2-ton)	2WD/4x4	Hybrid	Vortec 6.0L V8	332 @ 5100	367 @ 4100	Hybrid-specific	—	7,100 (2WD) 7,300 (4x4)	1,553 (2WD) 1,519 (4x4)
MAX Trailing Pack	1500 (1/2-ton)	2WD/4x4	LT, LTZ	Vortec 6.2L V8	403 @ 5700	417 @ 4300	Hydra-Matic 6-speed automatic overdrive	—	7,100 (2WD) 7,300 (4x4)	1,980 (2WD) 1,928 (4x4)

1 Limited availability. **2** Requires available LS Package. **3** Not available with Z71 Off-Road Package, MAX Trailing Pack or heated camper mirrors. Requires available All-Star Edition. **4** Requires available All-Star Edition, Z71 Appearance Package, Interior Plus Package or MAX Trailing Pack. **5** Requires available Interior Plus Package. **6** Requires available auto-dimming inside rearview mirror or auto-dimming inside rearview mirror with rear camera display. **7** Requires available Convenience Package. **8** Requires available LTZ Plus Package. **9** Go to gm.com/bluetooth to find out which phones are compatible with the vehicle. **10** Not compatible with all devices. **11** Not available with Z71 Off-Road Package. **12** Requires available Trailing Package or Heavy-Duty Cooling Package. **13** Requires available six-speed automatic transmission. **14** Requires available Trailing Package, Snow Plow Prep Package or Heavy-Duty Cooling Package. **15** Requires available Trailing Package, Snow Plow Prep Package or six-speed automatic transmission. **16** Included with available Z71 Off-Road Package. 2WD models require Z71 Off-Road Package. **17** Requires available Trailing Package. **18** Requires available 20" chrome-clad wheels. Use only GM-approved wheel and tire combinations. **19** Not available with Vortec 4.8L V8 engine. **20** Automatic locking rear differential not included on fleet orders. **21** Not available with Vortec 4.3L V6 engine or Solid Smooth Ride suspension. **22** Requires available Z71 Off-Road Package. **23** Includes Custom Leather-appointed trim. **24** Requires available OnStar and AM/FM stereo with CD/MP3 player. **25** Requires available Interior Plus Package or All-Star Edition. **26** Not available with power-sliding rear window. **27** Not available with All-Star Edition. **28** Requires available rearview camera system or camper mirrors. **29** Requires available Interior Plus Package or All-Star Edition and Convenience Package. **30** Not available with rear-window defogger. **31** Always use safety belts and the correct restraint for your child's age and size. Even in vehicles equipped with the Passenger Sensing System, children are safer when properly secured in a rear seat in the appropriate infant, child or booster seat. Never place a rear-facing infant restraint in the front seat of any vehicle equipped with a passenger air bag. See the Owner's Manual and child safety seat instructions for more safety information. **32** Visit onstar.com for coverage map, details and system limitations. Services vary by model and conditions. **33** Requires available front bucket seats. **34** Map coverage excludes Puerto Rico, the Virgin Islands and portions of Canada. **35** Requires available front bucket seats and Interior Plus Package or All-Star Edition. **36** Requires available front bucket seats and Interior Plus Package. **37** Requires a subscription sold separately by XM after trial period. Available only in the 48 contiguous United States and District of Columbia. Visit gm.xmradio.com for details. **38** Requires available navigation radio. Requires a subscription sold separately by XM after trial period. Available only in select markets. For more information, see xmradio.com/navtraffic. **39** Requires available Z71 Off-Road Package, MAX Trailing Pack or All-Star Edition. **40** Requires available MAX Trailing Pack. **41** Requires available Chrome Essentials Package. **42** Use only GM-approved tire and wheel combinations. Unapproved combinations may change the vehicle's performance characteristics. For important tire and wheel information, go to gmaccessorieszone.com or see your dealer for details. **43** Gross Vehicle Weight Rating (GVWR). When properly equipped; includes vehicle, passengers, cargo and equipment. **44** Maximum payload capacity includes weight of driver, passengers, optional equipment and cargo. Cargo and load capacity limited by weight and distribution. **45** Standard engine depends on trim level.



A



B

DIMENSIONS

- A = 79.9"
- B = 79.9"
- C = 73.5" to 73.9"
(depending on model and tire size selected)
- D = 143.5" Short Box
- E = 230.2"
- F = 50.6"
- G = 62.4"
- H = 148.9"
- I = 69.3" Short Box



D

E

C



F

G

H

I





IMPORTANT INFORMATION.

100,000 MILE/5-YEAR TRANSFERABLE POWERTRAIN LIMITED WARRANTY. Every 2011 Chevy passenger car, light-duty pickup, SUV and crossover comes with a 100,000 mile/5-year (whichever comes first) transferable Powertrain Limited Warranty. Plus, you get 100,000 miles/5 years (whichever comes first) of the 24/7 Roadside Assistance Program and the Courtesy Transportation Program and much more. See dealer for details.

NEW VEHICLE LIMITED WARRANTY. GM vehicles registered in the U.S.A. are covered for 3 years/36,000 miles (whichever comes first). The complete vehicle is covered, including tires, towing to your nearest Chevrolet dealership and cosmetic corrosion resulting from defects. Repairs will be made to correct any vehicle defect, and most warranty repairs will be made at no charge. In addition, rust-through corrosion will be covered for 6 years/100,000 miles (whichever comes first). See dealer for details.

ENGINES. Chevrolet products are equipped with engines produced by GM Powertrain or other suppliers to GM worldwide. The engines in Chevrolet products may also be used in other GM makes and models.

ASSEMBLY. Chevrolet vehicles and their components are assembled or produced by different operating units of General Motors, its subsidiaries or suppliers to GM worldwide. We sometimes find it necessary to produce Chevrolet vehicles with different or differently sourced components than originally scheduled. Since some options may be unavailable when your vehicle is assembled, we suggest you verify that your vehicle includes the equipment you ordered and that, if there were changes, they are acceptable to you.

ONSTAR. OnStar services require vehicle electrical system (including battery), wireless service and GPS satellite signals to be available and operating for features to function properly. OnStar acts as a link to existing emergency service providers. Subscription Service Agreement required. Call 1-888-4ONSTAR (1-888-466-7827) or visit onstar.com for OnStar Terms and Conditions, Privacy Statement, and details and system limitations.

A NOTE ABOUT CHILD SAFETY. Always use safety belts and the correct restraint for your child's age and size. Even in vehicles equipped with the Passenger Sensing System, children are safer when properly secured in a rear seat in the appropriate infant, child or booster seat. Never place a rear-facing infant restraint in the front seat of any vehicle equipped with a passenger air bag. See the Owner's Manual and child safety seat instructions for more safety information.

IMPORTANT WORDS ABOUT THIS CATALOG. We have tried to make this catalog comprehensive and factual. We reserve the right, however, to make changes at any time, without notice, in prices, colors, materials, equipment, specifications, models and availability. Specifications, dimensions, measurements, ratings and other numbers in this catalog and other printed materials provided at the dealership or affixed to vehicles are approximates based upon design and engineering drawings, prototypes and laboratory tests. Your vehicle may differ due to variations in manufacture and equipment. Since some information may have been updated since the time of printing, please check with your Chevrolet dealer for complete details. Chevrolet reserves the right to lengthen or shorten the model year for any product for any reason or to start and end model years at different times. Certain vehicle features may lose their usefulness over time due to obsolescence from technological changes. Unless otherwise noted, all claims based on GM Large Pickup segment and latest available competitive information. Excludes other GM vehicles.

TRAILERING AND OFF-ROAD DRIVING INFORMATION. Please go to chevy.com and carefully review an Owner's Manual for important safety information about trailering or off-road driving in your vehicle.

FLEET ORDERS. Some standard content may be deleted with fleet orders. See dealer for details.

At Chevrolet, giving you a completely satisfying ownership experience is our top priority. That's why if you ever need assistance, feel free to contact us at these websites or phone numbers.

CHEVY.COM. Offers shopping tools such as Build and Price, Find a Vehicle, Request Info, Email Sign-Up, Compare Vehicles, Financial Tools...and much more.

24-HOUR ROADSIDE ASSISTANCE PROGRAM (1-800-CHEV-USA). The Chevrolet Roadside Assistance Program provides you with the following services for 100,000 miles or 5 years (whichever comes first): Emergency Towing (to closest Chevy dealer from a legal roadway), Lockout Service (keys locked inside vehicle), Flat Tire Changes (spare installed), Fuel Delivery (\$5 worth of fuel delivered on the road) and Jump Starts (at home or on the road). For specific terms and conditions, please contact your Chevrolet Roadside Assistance advisor at 1-800-243-8872. Some services may incur costs.

COURTESY TRANSPORTATION PROGRAM. Ask your Chevrolet dealer for Courtesy Transportation if you leave your vehicle for extended repairs under the New Vehicle Limited Warranty or Powertrain Limited Warranty. Ask if you qualify for expense reimbursement and/or vehicle rental. Services vary by dealer.

CHEVROLET CUSTOMER ASSISTANCE CENTER (1-800-222-1020). Talk directly to customer relationship managers who can handle any inquiries related to vehicle operation, warranty coverages, or product or service concerns you may have. Please refer to your Owner's Manual for Customer Assistance information.

CHEVY.COM/SAFETY. Chevrolet is committed to keeping you and your family safe — from the start of your journey to your destination. That's why every Chevrolet is designed with a comprehensive list of safety and security features to help give you peace of mind.

GMMOBILITY.COM (1-800-323-9935). GM Mobility offers financial assistance for eligible adaptive equipment to make automotive travel easier for persons with disabilities or special transportation needs. To learn more about special GM Mobility offers, visit gmmobility.com.

CHEVROLET OWNER CENTER (GMOWNERCENTER.COM/CHEVY). Register your vehicle with the Chevrolet Owner Center, and receive benefits such as online access to your vehicle Owner's Manual, maintenance schedule reminders, service history tracking, warranty and service information, safety information, special offers and privileges, and news and events.

MARKETING AND INCENTIVES (CHEVY.COM/SPECIALOFFERS). Call 1-800-950-CHEV (1-800-950-2438) or visit chevy.com/specialoffers for new product, current incentive and marketing program information.

GM CARDMEMBERSERVICES.COM. Did you know about the family of reward credit cards that can help you get a great deal on a new GM car, light-duty truck, SUV or crossover? With a GM reward card, you accrue earnings on every credit card purchase to use toward the purchase or lease of an eligible, new GM vehicle. With three cards to choose from, you're sure to find one that suits you best.

GM, the GM Logo, Chevrolet, the Chevrolet Logo, and the slogans, emblems, vehicle model names, vehicle body designs and other marks appearing in this document are the trademarks and/or service marks of General Motors, its subsidiaries, affiliates or licensors. SIRIUS, XM and all related marks and logos are trademarks of SIRIUS XM Radio Inc. and its subsidiaries. The Bluetooth word mark is a registered trademark owned by Bluetooth SIG, Inc. and any use of such mark by Chevrolet is under license. iPod is a mobile digital device. iPod is a registered trademark of Apple, Inc. All rights reserved. Bose is a registered trademark of the Bose Corp. Rancho is a registered trademark of Tenneco Inc. ©2010 OnStar. All rights reserved. ©2010 General Motors. July 2010



**100,000 MILE | 5-YEAR
POWERTRAIN WARRANTY**
chevy.com/warranty



ACCESSORIES
chevy.com/accessories



onstar.com



gm.xmradio.com